

South Humber Bank Energy Centre Project

Planning Inspectorate Reference: EN010107

South Marsh Road, Stallingborough, DN41 8BZ

The South Humber Bank Energy Centre Order

Document Reference: 1.4 Notices for Statutory Publicity

**The Infrastructure Planning (Applications: Prescribed Forms and Procedure)
Regulations 2009 – Regulation 5(2)(q)**



Applicant: EP Waste Management Ltd
Date: April 2020

DOCUMENT HISTORY

Document Ref	Notices for Statutory Publicity		
Revision	1.0		
Author	JS		
Signed	JS	Date	29.03.20
Approved By	CT		
Signed	CT	Date	08.04.20
Document Owner	DWD		

GLOSSARY

Abbreviation	Description
ACC	Air-cooled condenser.
APFP Regulations	Applications: Prescribed Forms and Procedure) Regulations 2009
CCGT	Combined Cycle Gas Turbine.
DCO	Development Consent Order: provides a consent for building and operating an NSIP.
EfW	Energy from Waste: the combustion of waste material to provide electricity and/or heat.
EIA	Environmental Impact Assessment.
EPUKI	EP UK Investments Ltd.
EPWM	EP Waste Management Limited ('The Applicant')
ES	Environmental Statement.
mAOD	Metres Above Ordnance Datum.
MW	Megawatt: the measure of power produced.
NELC	North East Lincolnshire Council.
NSIP	Nationally Significant Infrastructure Project: for which a DCO is required.
PA 2008	Planning Act 2008.
Q2	Quarter 2
RDF	Refuse derived fuel.
SHBPS	South Humber Bank Power Station.
SoCC	Statement of Community Consultation: sets out how a developer will consult the local community about a proposed NSIP.
SoS	Secretary of State.
2017 EIA Regulations	Infrastructure Planning (Environmental Impact Assessment) Regulations 2017

CONTENTS

1.0 INTRODUCTION	1
1.1 Overview	1
1.2 The Applicant	1
1.3 The Proposed Development Site	1
1.4 The Proposed Development	2
1.5 Relationship with the Consented Development	3
1.6 The Purpose and Structure of this Document	4
2.0 NOTICES FOR STATUTORY PUBLICITY	5

TABLES

Table 2.1: Notices for Statutory Publicity	5
--	---

APPENDICES

Appendix 2.1: Section 47 (6) (A) PA 2008 SoCC Publication Notice – Duty to Consult Local Community

Appendix 2.2: Section 48 PA 2008 (And APFP Regulation 4(2)) – Duty to Publicise

Appendix 2.3: EIA Regulation 11 Notice – Duty to Publicise

Appendix 2.4: Section 42 PA 2008 – Site Land Owner Notice

1.0 INTRODUCTION

1.1 Overview

- 1.1.1 This 'Notices of Statutory Publicity' document (Document Ref. 1.4) has been prepared on behalf of EP Waste Management Limited ('EPWM' or the 'Applicant'). It forms part of the application (the 'Application') for a Development Consent Order (a 'DCO'), that has been submitted to the Secretary of State (the 'SoS') for Business, Energy and Industrial Strategy, under section 37 of 'The Planning Act 2008' (the 'PA 2008').
- 1.1.2 EPWM is seeking development consent for the construction, operation and maintenance of an energy from waste ('EfW') power station with a gross electrical output of up to 95 megawatts (MW) including an electrical connection, a new site access, and other associated development (together 'the Proposed Development') on land at South Humber Bank Power Station ('SHBPS'), South Marsh Road, near Stallingborough in North East Lincolnshire ('the Site').
- 1.1.3 A DCO is required for the Proposed Development as it falls within the definition and thresholds for a 'Nationally Significant Infrastructure Project' (a 'NSIP') under sections 14 and 15(2) of the PA 2008.
- 1.1.4 The DCO, if made by the SoS, would be known as the 'South Humber Bank Energy Centre Order' ('the Order').
- 1.1.5 Full planning permission ('the Planning Permission') was granted by North East Lincolnshire Council ('NELC') for an EfW power station with a gross electrical output of up to 49.9 MW and associated development ('the Consented Development') on land at SHBPS ('the Consented Development Site') under the Town and Country Planning Act 1990 on 12 April 2019. Since the Planning Permission was granted, the Applicant has assessed potential opportunities to improve the efficiency of the EfW power station, notably in relation to its electrical output. As a consequence, the Proposed Development would have a higher electrical output (up to 95 MW) than the Consented Development, although it would have the same maximum building dimensions and fuel throughput (up to 753,500 tonnes per annum (tpa)).

1.2 The Applicant

- 1.2.1 The Applicant is a subsidiary of EP UK Investments Limited ('EPUKI'). EPUKI owns and operates a number of other power stations in the UK. These include SHBPS and Langage (Devon) Combined Cycle Gas Turbine ('CCGT') power stations, Lynemouth (Northumberland) biomass-fired power station, and power generation assets in Northern Ireland. EPUKI also owns sites with consent for new power stations in Norfolk (King's Lynn 'B' CCGT) and North Yorkshire (Eggborough CCGT).
- 1.2.2 EPUKI is a subsidiary of Energetický A Průmyslový Holding ('EPH'). EPH owns and operates energy generation assets in the Czech Republic, Slovak Republic, Germany, Italy, Hungary, Poland, Ireland, and the United Kingdom.

1.3 The Proposed Development Site

- 1.3.1 The Proposed Development Site (the 'Site' or the 'Order limits') is located within the boundary of the SHBPS site, east of the existing SHBPS, along with

part of the carriageway within South Marsh Road. The principal access to the site is off South Marsh Road.

- 1.3.2 The Site is located on the South Humber Bank between the towns of Immingham and Grimsby; both over 3 km from the Site. The surrounding area is characterised by industrial uses dispersed between areas of agricultural land with the nearest main settlements being the villages of Stallingborough, Healing and Great Coates. The Site lies within the parish of Stallingborough although Stallingborough village lies over 2 km away.
- 1.3.3 The Site lies within the administrative area of NELC, a unitary authority. The Site is owned by EP SHB Limited, a subsidiary of EPUKI, and is therefore under the control of the Applicant, with the exception of the highway land on South Marsh Road required for the new Site access.
- 1.3.4 The existing SHBPS was constructed in two phases between 1997 and 1999 and consists of two CCGT units fired by natural gas, with a combined gross electrical capacity of approximately 1,400 MW. It is operated by EP SHB Limited.
- 1.3.5 The Site is around 23 hectares ('ha') in area and is generally flat, and typically stands at around 2.0 m Above Ordnance Datum (mAOD).
- 1.3.6 The land surrounding the Site immediately to the south, west and north-west is in agricultural use with a large polymer manufacturing site, Synthomer, and a waste management facility, NEWLINCS, both located to the north of the Site and also accessed from South Marsh Road. The estuary of the River Humber lies around 175 m to the east of the Site.
- 1.3.7 Access to the South Humber Bank is via the A180 trunk road and the A1173. The Barton railway line runs north-west to south-east between Barton-on-Humber and Cleethorpes circa 2.5 km to the south-west of the Site and a freight railway line runs north-west to south-east circa 300 m (at the closest point) to the Site.
- 1.3.8 A more detailed description of the Site is provided at Chapter 3: Description of the Proposed Development Site in the Environmental Statement ('ES') Volume I (Document Ref. 6.2).

1.4 The Proposed Development

- 1.4.1 The main components of the Proposed Development are summarised below:
 - Work No. 1— an electricity generating station located on land at SHBPS, fuelled by refuse derived fuel ('RDF') with a gross electrical output of up to 95 MW at ISO conditions;
 - Work No. 1A— two emissions stacks and associated emissions monitoring systems;
 - Work No. 1B— administration block, including control room, workshops, stores and welfare facilities;
 - Work No. 2— comprising electrical, gas, water, telecommunication, steam and other utility connections for the generating station (Work No. 1);
 - Work No. 3— landscaping and biodiversity works;

- Work No. 4— a new site access on to South Marsh Road and works to an existing access on to South Marsh Road; and
- Work No. 5— temporary construction and laydown areas.

1.4.2 Various types of ancillary development further required in connection with and subsidiary to the above works are detailed in Schedule 1 of the DCO. A more detailed description of the Proposed Development is provided at Schedule 1 'Authorised Development' of the Draft DCO and Chapter 4: The Proposed Development in the ES Volume I (Document Ref. 6.2) and the areas within which each of the main components of the Proposed Development are to be built is shown by the coloured and hatched areas on the Works Plans (Document Ref. 4.3).

1.5 Relationship with the Consented Development

1.5.1 The Proposed Development comprises the works contained in the Consented Development, along with additional works not forming part of the Consented Development ('the Additional Works'). The Additional Works are set out below along with an explanation of their purpose.

- a larger air-cooled condenser (ACC), with an additional row of fans and heat exchangers – this will allow a higher mass flow of steam to be sent to the steam turbine whilst maintaining the exhaust pressure and thereby increasing the amount of power generated;
- a greater installed cooling capacity for the generator – additional heat exchangers will be installed to the closed-circuit cooling water system to allow the generator to operate at an increased load and generate more power;
- an increased transformer capacity – depending on the adopted grid connection arrangement the capacity will be increased through an additional generator transformer operating in parallel with the Consented Development's proposed generator transformer or a single larger generator transformer. Both arrangements would allow generation up to 95 MW; and
- ancillary works – the above works will require additional ancillary works and operations, such as new cabling or pipes, and commissioning to ensure that the apparatus has been correctly installed and will operate safely and as intended.

1.5.2 The likely construction scenario is for work on the Consented Development (pursuant to the Planning Permission) to commence in Quarter 2 ('Q2') of 2020 and to continue for around three years. Following grant of a DCO for the Proposed Development (approximately halfway through the three-year construction programme), the Applicant would initiate powers to continue development under the Order instead of the Planning Permission. The Order includes appropriate powers and notification requirements for the 'switchover' between consents, to provide clarity for the relevant planning authority regarding the development authorised and the applicable conditions, requirements, and other obligations. Once the Order has been implemented the additional works would be constructed and the Proposed Development would be built out in full. The Proposed Development would commence operation in 2023.

- 1.5.3 Alternative construction scenarios, involving construction entirely pursuant to the Order, are also possible. Accordingly, three representative scenarios are described within Chapter 5: Construction Programme and Management in the ES Volume I (Document Ref. 6.2) and assessed in the Environmental Impact Assessment ('EIA').

1.6 The Purpose and Structure of this Document

- 1.6.1 The purpose of this document is to list and provide copies of the notices that have been published in national and local papers and other relevant publications, sent to consultees and erected in the vicinity of the Site during EPWM's statutory consultation on the Proposed Development, in order to comply with the statutory publicity requirements of the PA 2008, the Infrastructure Planning (Applications: Prescribed Forms and Procedure) Regulations 2009 (the 'APFP Regulations'), and the Infrastructure Planning (Environmental Impact Assessment) Regulations 2017 (the '2017 EIA Regulations') and the Planning Inspectorate's Advice Note 6: Preparation and submission of application documents (November 2019).
- 1.6.2 The statutory notices are listed in Section 2 of this report. Copies of the notices are provided in the appendices to this report, as referenced in the following sections.

2.0 NOTICES FOR STATUTORY PUBLICITY

- 2.1.1 The notices that have been published in national and local newspapers, sent to consultees and erected in the vicinity of the Site for the consultation on the Proposed Development, along with notices published in respect of the Statement of Community Consultation ('SoCC'), are listed in Table 2.1 below.
- 2.1.2 The statutory consultation ran from 29 October to 13 December 2019.
- 2.1.3 The Section 42 'Duty to consult' consultation with prescribed consultees, host and other relevant local authorities, non-prescribed consultees and section 44 persons, was undertaken from 29 October 2019 to 13 December 2019.
- 2.1.4 The Section 47 'Duty to consult local community' consultation was undertaken from 29 October 2019 to 13 December 2019, in accordance with the published SoCC.
- 2.1.5 In accordance with Section 48 'Duty to publicise', and Environmental Impact Assessment ('EIA') Regulation 13 Publicity, notices were published on 31 October 2019 and re-published in local newspapers on the 7 November 2019.

Table 2.1: Notices for Statutory Publicity

SECTION 47 (6) (A) PA 2008 SOCC PUBLICATION NOTICE – DUTY TO CONSULT LOCAL COMMUNITY – COPIES CAN BE FOUND AT APPENDIX 2.1	
Newspaper	Date Published
Grimsby Telegraph	17 October 2019 and 24 October 2019
Scunthorpe Telegraph	17 October 2019 and 24 October 2019
Hull Daily Mail	17 October 2019 and 24 October 2019
SECTION 48 PA 2008 (AND APFP REGULATION 4(2)) – DUTY TO PUBLICISE – COPIES CAN BE FOUND AT APPENDIX 2.2	
Newspaper	Date Published
Grimsby Telegraph	31 October 2019 and 7 November 2019
Scunthorpe Telegraph	31 October 2019 and 7 November 2019
Hull Daily Mail	31 October 2019 and 7 November 2019
The Guardian	31 October 2019
The London Gazette	31 October 2019
EIA REGULATION 13 NOTICE – DUTY TO PUBLICISE – AN EXAMPLE OF THE LETTER AND NOTICE SENT CAN BE FOUND AT APPENDIX 2.3	
Letter	Dates Sent
Example cover letter referring to EIA regulation 13, and a copy of the section 48 notice, both sent to consultees.	29 October 2019

SECTION 42 PA 2008 – SITE LANDOWNER NOTICE – COPIES CAN BE FOUND AT APPENDIX 2.4	
Notice	Date Erected
Notice publicising the Proposed Development and section 42 consultation to landownership interests	30 October 2019

APPENDIX 2.1: SECTION 47 (6) (A) PA 2008 SOCC PUBLICATION NOTICE – DUTY TO CONSULT LOCAL COMMUNITY

SECTION 47 (6) OF THE PLANNING ACT 2008

SOUTH HUMBER BANK ENERGY CENTRE PROJECT

NOTICE PUBLICISING THE STATEMENT OF COMMUNITY CONSULTATION

Notice is hereby given that EP Waste Management Limited (the 'Applicant') proposes to apply to the Secretary of State for Business, Energy and Industrial Strategy for development consent under the Planning Act 2008 (the 'PA 2008') to authorise the construction, operation and maintenance of a proposed energy from waste facility ('EfW') with a capacity of up to 95 megawatts ('MW') gross electrical output and associated development (the 'Proposed Development').

The site (the 'Site') for the Proposed Development is located on land at the South Humber Bank Power Station site, South Marsh Road, near Stallingborough, DN41 8BZ.

Full planning permission under the Town and Country Planning Act 1990 was granted by North East Lincolnshire Council, the Local Planning Authority, on 12 April 2019 (the 'Planning Permission') for an EfW facility with a capacity of up to 49.9 MW (the 'Consented Development') at the Site.

Since the Planning Permission was granted the Applicant has been assessing potential opportunities to improve the efficiency of the Consented Development and is therefore now proposing an EfW facility with a capacity of up to 95 MW. This means that it is classed as a nationally significant infrastructure project, which requires development consent under the PA 2008.

No changes are proposed to the maximum building dimensions and fuel throughput that were approved by the Planning Permission and assessed as part of the Environmental Impact Assessment that accompanied the planning application submitted to the Local Planning Authority.

The Applicant has a duty to consult the local community under Section 47 of the PA 2008 and has produced a Statement of Community Consultation ('SoCC') setting out how the consultation will be undertaken. This notice outlines when and where a copy of the SoCC can be inspected.

The SoCC may be inspected free of charge from 17 October 2019 at the venues detailed in this notice and on the project website at:

<https://www.shbenergycentre.co.uk/>

Requests for a hard copy of the SoCC should be made by:

- Post: SHBEC Consultation, c/o DWD, 6 New Bridge Street, London, EC4V 6AB
- Email: consultation@shbenergycentre.co.uk

SoCC INSPECTION VENUES	
VENUE DETAILS	OPENING HOURS
Immingham Library , Pelham Rd, Immingham, DN40 1QF	Mon, Tues, Thurs & Fri: 8.30am to 5.30pm Wed & Sun: Closed Sat: 9am to 1pm
Europarc Innovation Centre , Innovation Way, Europarc, Grimsby DN37 9TT	Mon, Tues, Wed, Thurs & Fri: 8.30am to 4.30pm Sat & Sun: Closed
North East Lincolnshire Council , ENGIE, New Oxford House, George Street, Grimsby, DN31 1HB	Mon, Tues, Wed, Thurs, Fri: 8.30am to 4.30pm Sat & Sun: Closed

Public consultation events, at which people will be able to find out more about the Proposed Development, will be held at the following venues in November 2019:

PUBLIC CONSULTATION VENUES	
VENUE DETAILS	DATE AND TIME
Europarc Innovation Centre , Innovation Way, Europarc, Grimsby DN37 9TT	Tues 12 th November 12:30pm - 5:15pm
Stallingborough Village Hall , Station Road, Stallingborough, DN41 8AP	Weds 13 th November 1:15pm - 5:30pm
Healing Manor Hotel , Stallingborough Rd, Healing, Grimsby DN41 7QF	Thurs 14 th November 2:30pm - 8pm

Venue opening hours may differ on public holidays and may be subject to change by the organisations that operate them and should be checked before attending.

Motors

Sell your car today from £20!



That's in your local newspaper & Online



marketplacelive.co.uk

Sell your car from just £20!

That's in the newspaper & online Visit: marketplacelive.co.uk

Any item any price free online



Love being part of something local

marketplacelive.co.uk
Your local place to buy and sell

Public Notices

Public Notices

SECTION 47 (6) OF THE PLANNING ACT 2008 SOUTH HUMBER BANK ENERGY CENTRE PROJECT NOTICE PUBLICISING THE STATEMENT OF COMMUNITY CONSULTATION

Notice is hereby given that EP Waste Management Limited (the 'Applicant') proposes to apply to the Secretary of State for Business, Energy and Industrial Strategy for development consent under the Planning Act 2008 (the 'PA 2008') to authorise the construction, operation and maintenance of a proposed energy from waste facility ('EFW') with a capacity of up to 95 megawatts ('MW') gross electrical output and associated development (the 'Proposed Development').

The site (the 'Site') for the Proposed Development is located on land at the South Humber Bank Power Station site, South Marsh Road, near Stallingborough, DN41 8BZ.

Full planning permission under the Town and Country Planning Act 1990 was granted by North East Lincolnshire Council, the Local Planning Authority, on 12 April 2019 (the 'Planning Permission') for an EFW facility with a capacity of up to 49.9 MW (the 'Consented Development') at the Site.

Since the Planning Permission was granted the Applicant has been assessing potential opportunities to improve the efficiency of the Consented Development and is therefore now proposing an EFW facility with a capacity of up to 95 MW. This means that it is classed as a nationally significant infrastructure project, which requires development consent under the PA 2008.

No changes are proposed to the maximum building dimensions and fuel throughput that were approved by the Planning Permission and assessed as part of the Environmental Impact Assessment that accompanied the planning application submitted to the Local Planning Authority.

The Applicant has a duty to consult the local community under Section 47 of the PA 2008 and has produced a Statement of Community Consultation ('SoCC') setting out how the consultation will be undertaken. This notice outlines when and where a copy of the SoCC can be inspected.

The SoCC may be inspected free of charge from 17 October 2019 at the venues detailed in this notice and on the project website at: <https://www.shbenergycentre.co.uk/>.

Requests for a hard copy of the SoCC should be made by:

- Post: SHBEC Consultation, c/o DWD, 6 New Bridge Street, London, EC4V 6AB
- Email: consultation@shbenergycentre.co.uk

SOCC INSPECTION VENUES	
VENUE DETAILS	OPENING HOURS
Immingham Library , Pelham Rd, Immingham, DN40 1QF	Mon, Tues, Thurs & Fri: 8.30am to 5.30pm Wed & Sun: Closed Sat: 9am to 1pm
Europarc Innovation Centre , Innovation Way, Europarc, Grimsby DN37 9TT	Mon, Tues, Wed, Thurs & Fri: 8.30am to 4.30pm Sat & Sun: Closed
North East Lincolnshire Council , ENGIE, New, Oxford House, George Street, Grimsby, DN31, 1HB	Mon, Tues, Wed, Thurs, Fri: 8.30am to 4.30pm Sat & Sun: Closed

Public consultation events, at which people will be able to find out more about the Proposed Development, will be held at the following venues in November 2019:

PUBLIC CONSULTATION VENUES	
VENUE DETAILS	DATE AND TIME
Europarc Innovation Centre , Innovation Way, Europarc, Grimsby DN37 9TT	Tues 12th November 12:30pm - 5:15pm
Stallingborough Village Hall , Station Road, Stallingborough, DN41 8AP	Weds 13th November 1:15pm - 5:30pm
Healing Manor Hotel , Stallingborough Rd, Healing, Grimsby DN41 7QF	Thurs 14th November 2:30pm - 8pm

Venue opening hours may differ on public holidays and may be subject to change by the organisations that operate them and should be checked before attending.

NORTH EAST LINCOLNSHIRE COUNCIL
Publicity of Planning & Related Applications

The applications set out in the Schedule below are required to be given wider publicity and public comment is invited. Copies of the applications can be viewed on-line at <http://www.nelincs.gov.uk/>.

The reason for publicising each application is indicated after the application number as follows:-

(02) Development affecting a Listed Building; (03) Development affecting the setting of a Listed Building; (09) Development affecting the Wellow Conservation Area; (10) Development affecting the Central Area Conservation Area; (18) Development affecting the Cleethorpes Central Seafront Conservation Area; (22) Development affecting tree(s) subject to tree preservation orders

- SCHEDULE**
- DM/0872/19/FUL** Replace existing steel framed gates and fixed side screen and install new painted steel decorative gates and two fixed side screens. The Pier, Central Promenade, Cleethorpes-(18)
- DM/0847/19/ADV** Removal of 2no. 48-sheet advertising hoardings and installation of 1no. 48-sheet LED advertisement display advertising board to side of 100 Cleethorpe Road, Cleethorpe Road, Grimsby-(03)
- DM/0840/19/FUL** Installation of 132 solar pv panels to the roof, Civic Offices, Knoll Street, Cleethorpes-(03)(18)
- DM/0371/19/FUL** Retrospective application for the installation of CCTV cameras, cigarette bins and lantern to front and replacement window to rear with various alterations, Tivoli Tavern, 14 Old Market Place, Grimsby-(02)(10)
- DM/0887/19/FUL** Erect a detached dormer bungalow with integral garage, 41 Humberston Avenue, Humberston-(22)
- DM/0879/19/FUL** Change of use of office to 4 flats to include removal of fire escape stairs, erect front boundary wall and railings, erect detached bike store and various associated external changes, 26 Dudley Street, Grimsby-(09)
- Comments should be made:
- On line at <http://www.nelincs.gov.uk/> or by post to:
 - Development Management Services, New Oxford House, 2 George Street, Grimsby, DN31 1HB by 10th November 2019
- Please Note:** Signatures, telephone numbers and e-mail addresses attached to representations will not be shown on the Council's web site but your name and address will be displayed. Anonymous representations will not be taken into account if no name and address are supplied.
- Director of Economy and Growth - Place**
17th October 2019

LICENSING ACT 2003
NOTICE OF APPLICATION FOR A PREMISES LICENCE

Premises: Food Warehouse, Unit D Lakeside Retail Park, Scunthorpe, DN16 3JA. Notice is given that Iceland Foods Limited have applied to the North Lincolnshire Council Licensing Authority for a new Premises Licence under the Licensing Act 2003. The proposed application relates to: The retail sale of alcohol off the premises Monday to Sunday: 07:00 to 23:00. Anyone who wishes to make representations regarding this application must give notice in writing by 6th November 2019 to Licensing Team, North Lincolnshire Council, Church Square House, PO Box 42, Scunthorpe, North Lincolnshire, DN15 6XQ where the register of licensing applications can be inspected by appointment. Alternatively, representations may be made by email to: licensing@northlincs.gov.uk. It is an offence to knowingly or recklessly make a false statement in connection with an application which carries an unlimited fine.

Iceland Foods Ltd, Second Avenue, Deeside Industrial Park, Deeside, Flintshire, CH5 2NW.

Booking online, what a great idea



Any item any price free online

marketplacelive.co.uk
Your local place to buy and sell

Find it local



marketplacelive.co.uk
Your local place to buy and sell

Any item any price free online



Find an out of this world bargain online

marketplacelive.co.uk
Your local place to buy and sell

Public Notices

Public Notices

THE EAST RIDING OF YORKSHIRE COUNCIL (ON STREET PARKING PLACES) (CIVIL ENFORCEMENT) (CONSOLIDATION) (AMENDMENT NO 51) (STOCKBRIDGE ROAD, ELLOUGHTON) ORDER 2019

- East Riding of Yorkshire Council proposes to make a Road Traffic Regulation Order to amend The East Riding of Yorkshire Council (On Street Parking Places) (Civil Enforcement) (Consolidation) Order 2017 the effect of which will be:
 - To introduce a No Waiting at Any Time restriction on part of Stockbridge Road, Elloughton.
 - To introduce No Waiting restrictions Monday to Friday between 8.15am and 9.15am and between 3pm and 4pm on parts of Stockbridge Road, Elloughton.
 - To introduce a mandatory School Keep Clear No Stopping restriction Monday to Friday between 8.15am and 9.15am and between 3pm and 4pm on part of Stockbridge Road, Elloughton. The proposed changes are shown on Plan Title References EV96A and EV97A which are attached to the proposed Order. An annotated illustrative drawing is also available for inspection with reference CE/TP/029A which shows for ease of reference the proposed amendments. If the Order becomes operative Plan Title References EV96A and EV97A will be incorporated into The East Riding of Yorkshire Council (On Street Parking Places) (Civil Enforcement) (Consolidation) Order 2017 to replace the existing Plan Title References EV96 and EV97.
- A copy of the draft Order, annotated illustrative drawing and a statement of the council's reasons for proposing to make the Order are available for inspection at Brough Customer Service Centre, Petuaria Centre, Centurion Way, Brough, HU15 1AY and Beverley Customer Service Centre, Cross Street, Beverley, HU17 9BA. A copy of the street notice and annotated illustrative drawing have been placed on the council's website (<http://www2.eastriding.gov.uk/environment/roads-streets-traffic-and-parking/roads-pavements-and-traffic/traffic-regulations/>). Any enquiries relating to this proposal may be made to Traffic & Parking Services, Directorate of Communities & Environment, (Ref:TF), Beverley Depot, Annie Reed Road, Beverley, HU17 0LF telephone (01482) 393939 during normal office hours.
- Objections to the proposed Order, stating the grounds for objection, should be emailed to mike.goodison@eastriding.gov.uk or sent in writing to Head of Legal & Democratic Services, Directorate of Corporate Resources (MG/79054), County Hall, Beverley by **7 November 2019**.

Dated 17 October 2019

Mathew Buckley
Solicitor • Head of Legal & Democratic Services
East Riding of Yorkshire Council

East Riding of Yorkshire Council will, on request, provide this document in Braille, audio or large print format.

If English is not your first language and you would like a translation of this document, please tel (01482) 393939.

KINGSTON UPON HULL CITY COUNCIL THE KINGSTON UPON HULL SPRING BANK WEST / RILEY WAY JUNCTION (PROHIBITION OF U TURNS, NO ENTRY AND PEDAL CYCLES ONLY) ORDER 2019

Notice is hereby given that the Kingston upon Hull City Council on the 16th October 2019 made the above Order under the Road Traffic Regulation Act 1984. The Order will come into operation on the 21st October 2019.

As part of the new housing development at the former Riley College site a new junction is being created at the point where the new road known as Riley Way meets Spring Bank West. The new junction extends the central reservation on Spring Bank West to a point west of the new junction with Riley Way. There will be a gap in the central reservation to allow pedal cycles to turn right out of Riley Way to proceed eastwards along the northern carriageway of Spring Bank West.

To ensure that the new junction operates safely and does not cause delays to traffic on Spring Bank West, it is proposed to prohibit vehicles travelling on the southern carriageway of Spring Bank West from making a u-turn manoeuvre at the end of the central reservation to the west of the new junction.

It is also proposed to prohibit vehicles travelling on the northern carriageway of Spring Bank West from entering the gap in the central reservation opposite the junction with Riley Way, to ensure that this cycle gap is used as designed.

A copy of the Order and relevant map may be examined during normal office hours at the Reception and Enquiries Office, The Guildhall, The Kingston upon Hull, reference JGO/39800-1395.

If you wish to question the validity of this Order or any provisions contained in it on the grounds that it is not within the powers conferred by the Road Traffic Regulation Act 1984, as amended, or on the grounds that any requirement of that Act or of any instrument made under it has not been complied with in relation to the Order, you may, within six weeks from the 16th October 2019, apply to the High court for this purpose.

Dated the 17th day of October 2019

Ian Anderson
Director of Legal Services and Partnerships

SECTION 47 (6) OF THE PLANNING ACT 2008 SOUTH HUMBER BANK ENERGY CENTRE PROJECT NOTICE PUBLICISING THE STATEMENT OF COMMUNITY CONSULTATION

Notice is hereby given that EP Waste Management Limited (the 'Applicant') proposes to apply to the Secretary of State for Business, Energy and Industrial Strategy for development consent under the Planning Act 2008 (the 'PA 2008') to authorise the construction, operation and maintenance of a proposed energy from waste facility ('EFW') with a capacity of up to 95 megawatts ('MW') gross electrical output and associated development (the 'Proposed Development').

The site (the 'Site') for the Proposed Development is located on land at the South Humber Bank Power Station site, South Marsh Road, near Stallingborough, DN41 8BZ.

Full planning permission under the Town and Country Planning Act 1990 was granted by North East Lincolnshire Council, the Local Planning Authority, on 12 April 2019 (the 'Planning Permission') for an EFW facility with a capacity of up to 49.9 MW (the 'Consented Development') at the Site.

Since the Planning Permission was granted the Applicant has been assessing potential opportunities to improve the efficiency of the Consented Development and is therefore now proposing an EFW facility with a capacity of up to 95 MW. This means that it is classed as a nationally significant infrastructure project, which requires development consent under the PA 2008.

No changes are proposed to the maximum building dimensions and fuel throughput that were approved by the Planning Permission and assessed as part of the Environmental Impact Assessment that accompanied the planning application submitted to the Local Planning Authority.

The Applicant has a duty to consult the local community under Section 47 of the PA 2008 and has produced a Statement of Community Consultation ('SoCC') setting out how the consultation will be undertaken. This notice outlines when and where a copy of the SoCC can be inspected free of charge from 17 October 2019 at the venues detailed in this notice and on the project website at:

- <https://www.shbenergycentre.co.uk/>
- Requests for a hard copy of the SoCC should be made by:
- Post: SHBEC Consultation, c/o DWD, 6 New Bridge Street, London, EC4V 6AB
 - Email: consultation@shbenergycentre.co.uk

SoCC INSPECTION VENUES	
VENUE DETAILS	OPENING HOURS
Immingham Library , Pelham Rd, Immingham, DN40 1QF	Mon, Tues, Thurs & Fri: 8.30am to 5.30pm Wed & Sun: Closed Sat: 9am to 1pm
Europarc Innovation Centre , Innovation Way, Europarc, Grimsby DN37 9TT	Mon, Tues, Wed, Thurs & Fri: 8.30am to 4.30pm Sat & Sun: Closed
North East Lincolnshire Council , ENGIE, New Oxford House, George Street, Grimsby, DN31 1HB	Mon, Tues, Wed, Thurs, Fri: 8.30am to 4.30pm Sat & Sun: Closed

Public consultation events, at which people will be able to find out more about the Proposed Development, will be held at the following venues in November 2019:

PUBLIC CONSULTATION VENUES	
VENUE DETAILS	DATE AND TIME
Europarc Innovation Centre , Innovation Way, Europarc, Grimsby DN37 9TT	Tues 12th November 12:30pm - 5:15pm
Stallingborough Village Hall , Station Road, Stallingborough, DN41 8AP	Weds 13th November 1:15pm - 5:30pm
Healing Manor Hotel , Stallingborough Rd, Healing, Grimsby DN41 7QF	Thurs 14th November 2:30pm - 8pm

Venue opening hours may differ on public holidays and may be subject to change by the organisations that operate them and should be checked before attending.

Goods Vehicle Operator's Licence

JD Engineering (Northern) LTD trading as JD Garage Equipment of Number One, Technology Close, Green Park, Newport, East Riding of Yorkshire, HU15 2FX is applying for a licence to use Number One, Technology Close, Green Park, Newport, East Riding of Yorkshire, HU15 2FX as an operating centre for 14 goods vehicles and 7 trailers. Owners or occupiers of land (including buildings) near the operating centre(s) who believe that their use or enjoyment of that land would be affected, should make written representations to the Traffic Commissioner at Hillcrest House, 386 Harehills Lane, Leeds, LS9 6NF stating their reasons, within 21 days of this notice. Representatives must at the same time send a copy of their representations to the applicant at the address given at the top of this notice. A Guide to Making Representations is available from the Traffic Commissioner's Office.

JOYCE DURBRIDGE-SMITH (Deceased)
Pursuant to the Trustee Act 1925 Section 27 NOTICE IS GIVEN that all conditions and others having any claims against or claiming to be beneficially interested in the Estate of Joyce Durbridge-Smith Deceased late of 128 Woodland Drive, Anlaby HU10 7HT who died on the 2nd May 2019 and Grant of Probate to the estate were granted on 27th September 2019 out of the Leeds District Probate Registry of the Family Division of the High Court to Patrick Ernest Craft and Judith Ann Knight are required to serve particulars in writing to the undersigned Solicitors whose address is of Hanover House, Alfred Gelder Street, Hull HU1 2AH on or before 27th December 2019 after which date the Administrator will proceed to distribute the assets of the Deceased among the persons entitled to them having regard only to the claims of which they have had notice and shall not be liable for the assets of the deceased or any part of them so distributed to any person or persons of whose claims or demands they then have not had notice.

Payne & Payne Solicitors

THE EAST RIDING OF YORKSHIRE COUNCIL ROAD TRAFFIC REGULATION ACT 1984 SECTION 14 (1) TEMPORARY PROHIBITION OF THROUGH TRAFFIC

A1034 BROUGH ROAD, SOUTH CAVE (PART OF):
Notice is hereby given that East Riding of Yorkshire Council intends not less than seven days from the date of this notice to make an Order, the effect of which will be to prohibit any vehicle from proceeding along A1034 Market Place/Brough Road, South Cave between Church Street and Willow Flats commencing **4 November 2019** to allow junction improvement works at the South Cave interchange.

The road closure is necessary to enable the works to be carried out in a manner consistent with ensuring the safety of the public. The Order is valid for 18 months, but it is anticipated that the works will be completed by **6 March 2020**. The works will take place between the hours of 20.00 hours and 06.00 hours only. The alternative route for traffic affected by the road closure will be via:

Vehicles wishing to access South Cave travelling east bound on M62:

M62 Howden Interchange to Boothferry roundabout, Thorpe Road, A614 to Spionthorpe roundabout, A1079 to Market Weighton roundabout, A1034 to South Cave.

Vehicles wishing to access South Cave approaching from the East or from the Humber Bridge:

Humber Bridge roundabout, A164 to Jocks Lodge Intersection, A1079 to Market Weighton roundabout, A1034 to South Cave.

Vehicles wishing to travel to South Cave from the settlements South West of the South Cave interchange:

Join the M62 westbound, Howden Interchange to Boothferry roundabout, Thorpe Road, A614 to Spionthorpe roundabout, A1079 to Market Weighton roundabout, A1034 to South Cave.

Vehicles wishing to travel to South Cave from the settlements South East of the South Cave interchange:

Join the A63 eastbound carriageway towards Hull at either Welton or Melton Interchange, A15 Boothferry Road, Humber Bridge roundabout, A164 to Jocks Lodge Intersection, A1079 to Market Weighton roundabout, A1034 to South Cave.

All diversion routes will be signed at the time of closure. The road will be closed to all traffic but access will be maintained for emergency vehicles.

Further information can be obtained by contacting the council, tel (01482) 393939 and asking for Highways Customer Care.

Dated 17 October 2019

Paul Bellotti • Director of Communities & Environment
County Hall, Beverley, East Riding of Yorkshire, HU17 9BA

THE EAST RIDING OF YORKSHIRE COUNCIL ROAD TRAFFIC REGULATION ACT 1984 SECTION 14 (1) TEMPORARY PROHIBITION OF THROUGH TRAFFIC RIPLEIGHAM ROAD WEST (PART OF), GREAT GUTTER LANE WEST AND SWANLAND DALE (PART OF), SWANLAND

Notice is hereby given that East Riding of Yorkshire Council gives notice that no person shall proceed along the following:

Great Gutter Lane West leading to Swanland Dale.
Riplingham Road West - extending approximately 50 metres from the junction with Swanland Dale and Great Gutter Lane West.
Swanland Dale, Swanland between the junction with Riplingham Road West and the junction with Occupation Lane.

The works will take place on the following dates/times:
• **Saturday 26 October 2019 00.01 hours to Sunday 3 November 2019 23.59 hours**
• **Friday 8 November 2019 20.00 hours to Monday 11 November 2019 06.00 hours**
• **Friday 15 November 2019 20.00 hours to Monday 18 November 2019 06.00 hours**

The closures are necessary to enable the works to be carried out in a manner consistent with ensuring the safety of the public. The alternative route for traffic affected by the road closure will be via:

For vehicles travelling to and from locations east and west of the closure areas:
Humber Bridge Northern Approach Road, Willerby Roundabout, Beverley Road, Willerby Hill Roundabout, Castle Hill Roundabout, Skidby Roundabout, Main Street, Westfield Road, Eppleworth and Raywell and vice versa.

For vehicles travelling to and from locations north and south of the closure areas:
Occupation Lane, Beech Hill Road, Greenstiles Lane, Tranby Lane, Swanland Roundabout, Humber Bridge Northern Approach Road and vice versa.

The diversion routes will be signed at the time of closure. The road will be closed to all traffic but access will be maintained for emergency vehicles and affected residents.

Further information can be obtained by contacting the council, tel (01482) 393939 and asking for Highways Customer Care.

Dated 17 October 2019

Paul Bellotti • Director of Communities & Environment
County Hall, Beverley, East Riding of Yorkshire, HU17 9BA

THE EAST RIDING OF YORKSHIRE COUNCIL ROAD TRAFFIC REGULATION ACT 1984 SECTION 14 (1) TEMPORARY PROHIBITION OF THROUGH TRAFFIC LADYGATE, BEVERLEY (PART)

Notice is hereby given that East Riding of Yorkshire Council intends not less than seven days from the date of this notice to make an Order, the effect of which will be to prohibit any vehicle from proceeding along Ladygate, Beverley (section between Sow Hill Road and Saturday Market) between **08.00 hours Monday 4 November 2019 until 18.00 hours Friday 8 November 2019** to enable a new gas main to be laid and three new services.

The road closure is necessary to enable the works to be carried out in a manner consistent with ensuring the safety of the public. The Order is valid for 18 months, but it is anticipated that the works will be completed within the times stated.

The alternative route for traffic affected by the closure will be via Saturday Market, North Bar Writin, Hengate and Sow Hill Road, Beverley. Access will be maintained for pedestrians, residents access and emergency services only.

Further information can be obtained from Streetscene Services, Highways, tel (01482) 393939. Ref:JS.
Dated 17 October 2019

Paul Bellotti • Director of Communities & Environment
County Hall, Beverley, East Riding of Yorkshire, HU17 9BA

Notice for 2019 AGM

The Annual General Meeting of Citizens Advice Hull & East Riding will be held at 4.30 pm on Tuesday 12 November 2019 at The Guildhall, Alfred Gelder Street, Hull, HU1 2AA

CONFIRMATION OF LOST PASSPORT

For Mrs Rozghar Khair containing her details.
Passport No A4418913 has been lost between Hull City Centre and Walker Street since 13/10/19. If found please return to the local Police Authority quoting Crime Reference number **LR201910132AE4-712F87F5EFD**
Dated: 16/10/19

Legal Notices

BRENDA MARIE HILL (Deceased)
Pursuant to the Trustee Act 1925 any persons having a claim against or an interest in the Estate of the aforementioned deceased, late of Sunningdale Court Nursing Home Birkdale Way Hull HU9 2BH, who died on 01/07/2019, are required to send particulars thereof in writing to the undersigned Solicitors on or before 27/12/2019, after which date the Estate will be distributed having regard only to claims and interests notified.

PEPPERELLS SOLICITORS
100 Alfred Gelder Street
Hull HU1 2AE

JOHN BURWELL RADDINGS (Deceased)
Pursuant to the Trustee Act 1925 anyone having a claim against or an interest in the Estate of the deceased, late of 69 The Parkway, Willerby, HU10 6AX, who died on 01/02/2019, must send written particulars to the address below by 18/12/2019, after which date the Estate will be distributed having regard only to claims and interests notified.

Burstalls Solicitors
Ocean Chambers, 54 Longgate, Hull,
HU1 1EJ Ref:BMN51117

General Announcements

HULL FC LUCKY 13 LOTTERY DRAW
Week 14 - 11/10/2019

£500 winner - V9619
£50 winners - F60810, B5791, W5686, T7525

JACKPOT V5000

Draws take place every Friday

For a full list of prize winners

visit our lottery page on <http://www.hullfc.com>

Adult Services 18+

Adult Massage

VERY BUSTY INDEPENDENT ELLIE
GOOD GIRLS GO TO HEAVEN, BAD GIRLS TAKE YOU THERE.

07516 383344
www.adultwork.com/ellie123456

*** * * C U R V Y**

KATE**** THICK set

and curvy 07496161099

****ALEC**** DISCREET

Mature Male. Services for Ladies or Gents Call

07495693460

CHRISSEY'S ANGELS

Special Offer - www.chrisseysangels.co.uk

01482 345726

CLASSY BRUNETTE

discreet location

07951276888

DISCRETION.UK

STAFF Req Tel. 01482

216820

SEDUCTIONS

MESSAGE Parlour

Staff req'd 01482 355105

Adult Services

621 ELEGANCE

New management, staff needed. 07367649616

Public Notices

Public Notices

SECTION 47 (6) OF THE PLANNING ACT 2008 SOUTH HUMBER BANK ENERGY CENTRE PROJECT NOTICE PUBLICISING THE STATEMENT OF COMMUNITY CONSULTATION

Notice is hereby given that EP Waste Management Limited (the 'Applicant') proposes to apply to the Secretary of State for Business, Energy and Industrial Strategy for development consent under the Planning Act 2008 (the 'PA 2008') to authorise the construction, operation and maintenance of a proposed energy from waste facility ('EW') with a capacity of up to 95 megawatts ('MW') gross electrical output and associated development (the 'Proposed Development').

The site (the 'Site') for the Proposed Development is located on land at the South Humber Bank Power Station site, South Marsh Road, near Stallingborough, DN41 8BZ.

Full planning permission under the Town and Country Planning Act 1990 was granted by North East Lincolnshire Council, the Local Planning Authority, on 12 April 2019 (the 'Planning Permission') for an EW facility with a capacity of up to 49.9 MW (the 'Consented Development') at the Site.

Since the Planning Permission was granted the Applicant has been assessing potential opportunities to improve the efficiency of the Consented Development and is therefore now proposing an EW facility with a capacity of up to 95 MW. This means that it is classed as a nationally significant infrastructure project, which requires development consent under the PA 2008.

No changes are proposed to the maximum building dimensions and fuel throughput that were approved by the Planning Permission and assessed as part of the Environmental Impact Assessment that accompanied the planning application submitted to the Local Planning Authority.

The Applicant has a duty to consult the local community under Section 47 of the PA 2008 and has produced a Statement of Community Consultation ('SoCC') setting out how the consultation will be undertaken. This notice outlines when and where a copy of the SoCC can be inspected.

The SoCC may be inspected free of charge from 17 October 2019 at the venues detailed in this notice and on the project website at: <https://www.shbenergycentre.co.uk/>

Requests for a hard copy of the SoCC should be made by:

- Post: SHBEC Consultation, c/o DWD, 6 New Bridge Street, London, EC4V 6AB
- Email: consultation@shbenergycentre.co.uk

SoCC INSPECTION VENUES	
VENUE DETAILS	OPENING HOURS
Immingham Library , Pelham Rd, Immingham, DN40 10F	Mon, Tues, Thurs & Fri: 8.30am to 5.30pm Wed & Sun: Closed Sat: 9am to 1pm
Europarc Innovation Centre , Innovation Way, Europarc, Grimsby DN37 9TT	Mon, Tues, Wed, Thurs & Fri: 8.30am to 4.30pm Sat & Sun: Closed
North East Lincolnshire Council, ENGIE , New Oxford House, George Street, Grimsby, DN41 1HB	Mon, Tues, Wed, Thurs, Fri: 8.30am to 4.30pm Sat & Sun: Closed

Public consultation events, at which people will be able to find out more about the Proposed Development, will be held at the following venues in November 2019:

PUBLIC CONSULTATION VENUES	
VENUE DETAILS	DATE AND TIME
Europarc Innovation Centre , Innovation Way, Europarc, Grimsby DN37 9TT	Tues 12th November 12:30pm - 5:15pm
Stallingborough Village Hall , Station Road, Stallingborough, DN41 8AP	Weds 13th November 1:15pm - 5:30pm
Healing Manor Hotel , Stallingborough Rd, Healing, Grimsby DN41 7QF	Thurs 14th November 2:30pm - 8pm

Venue opening hours may differ on public holidays and may be subject to change by the organisations that operate them and should be checked before attending.



ROAD TRAFFIC REGULATION ACT 1984 - SECTION 14 THE A63 TRUNK ROAD (DALTRY STREET INTERCHANGE TO WESTERN INTERCHANGE) (TEMPORARY RESTRICTION AND PROHIBITION OF TRAFFIC)

NOTICE IS HEREBY GIVEN that Highways England Company Limited intends to make an Order on the A63 Trunk Road, in the East Riding of Yorkshire, to enable traffic management installation, geotechnical construction and installation, concrete barrier, carriageway resurfacing, sign installation, cyclic maintenance, routine maintenance, road marking and associated works to be carried out in safety.

The works are expected to start on Monday 18 November 2019 for 49 nights or until completed, and will take place between 7pm and 7am.

The effect of the Order will be, at times during the works to:

- impose a 40mph speed restriction on the A63 westbound carriageway from 350 metres west of the entry slip road at Daltry Street Interchange to exit slip road at Western Interchange, a distance of 7500 metres;
- close the A63 eastbound carriageway from the exit slip road at Western Interchange to the entry slip road at Priory Way Interchange, a distance of 4150 metres;
- close the A63 westbound carriageway from the exit slip road at Brighton Street Interchange to entry slip road at Western Interchange, a distance of 7400 metres;
- close the eastbound exit and the westbound exit slip roads at Western Interchange;
- close the eastbound exit and the westbound entry and exit slip roads at Priory Way Interchange; and
- close the westbound entry slip road at Brighton Street Interchange.

During the carriageway closures suitably signed alternative routes will be available at all times.

It will also be necessary, for 24 hours a day to close the layby situated on the A63:

- eastbound carriageway approximately 825 metres and 1290 metres east of the entry slip road at Western Interchange;
- westbound carriageway approximately 740 metres and 1610 metres west of the entry slip road at Priory Way Interchange; and
- westbound carriageway approximately 575 metres west of the entry slip road at Brighton Street Interchange.

Traffic management will be in force 24 hours a day and traffic signs will indicate the extent of the restrictions (which will not apply to emergency service vehicles or special forces vehicles) and prohibitions (which will not apply to emergency service vehicles, vehicles being used in connection with the said works or winter maintenance purposes). Access will be maintained at all times to premises and property, which is accessible from, and only from, the A63. The Order comes into force on 18 November 2019 and has a maximum duration of eighteen months.

The contact for any further information about this notice is Craig Nicholson, telephone: 0300 4702593, e-mail: craig.nicholson@highwaysengland.co.uk

Richard Foxton, Highways England, 3 South, Lateral, 8 City Walk, Leeds, LS11 9AT.

KINGSTON UPON HULL CITY COUNCIL THE KINGSTON UPON HULL CRANBERRY WAY / PICKERING ROAD (PARKING RESTRICTIONS) ORDER 2019

Notice is hereby given that the Kingston upon Hull City Council on the 23rd October 2019 made the above Order under the Road Traffic Regulation Act 1984. The Order will come into operation on the 28th October 2019.

The effect of the Order is to introduce no waiting at any time parking restrictions (double yellow lines) at the junction of Cranberry Way and Pickering Road.

The purpose of the Order is to alleviate the current situation where indiscriminate parking is obscuring driver sight lines.

A copy of the Order and relevant map may be examined during normal office hours at the Reception and Enquiries Office, The Guildhall, The Kingston upon Hull, reference JGO/39800-1391.

If you wish to question the validity of this Order or any provisions contained in it on the grounds that it is not within the powers conferred by the Road Traffic Regulation Act 1984, as amended, or on the grounds that any requirement of that Act or of any instrument made under it has not been complied with in relation to the Order, you may, within six weeks from the 23rd October 2019, apply to the High court for this purpose. Dated the 24th October 2019

Ian Anderson

Director of Legal Services and Partnerships

LECONFIELD PRIMARY SCHOOL PUBLIC NOTICE TO EXTEND THE AGE RANGE

Notice is given in accordance with the School Organisation (Prescribed Alterations to Maintained Schools) (England) Regulations 2013 that East Riding of Yorkshire Council intends to make a prescribed alteration to Leconfield Primary School, Arram Road, Leconfield, Beverley, East Riding of Yorkshire, HU17 7NP. It is proposed that the age range of the school is extended from 4-11 years to 3-11 years from 1 January 2020.

The aim of the proposal is to enable the school to offer an early education provision located in the school, with 25 places to be offered.

Any person may object to or make comments on the proposal by sending them via email to schoolorganisation@eastriding.gov.uk

Alternatively, objections and comments can be sent by post to School Organisation Officer, Pupil Services, East Riding of Yorkshire Council, County Hall, Beverley, East Riding of Yorkshire, HU17 9BA. Comments and objections must be received by the School Organisation Officer by 28 November 2019.

This notice is an extract from the complete proposal. The complete proposal can be viewed on the council's website at www.eastriding.gov.uk. A copy can also be provided by the School Organisation Officer at the address given above. Dated 24 October 2019

Mathew Buckley
Solicitor • Head of Legal & Democratic Services
East Riding of Yorkshire Council

LICENSING ACT 2003 NOTICE OF AN APPLICATION FOR A PREMISES LICENCE

An application was given to Hull City Council on 01.10.2019 by Mr Adam Smith of 67 Whitefriargate, Hull, HU1 2HY in relation to licensable activities on the premises for: Provision of regulated Entertainment Monday to Sunday 10.00 - 03.00. Provision of late night refreshment Monday - Sunday 23.00 - 02.30. Sale by retail of alcohol Monday - Sunday 10.00-02.30. Opening hours of the premises Monday to Sunday 10.00-03.00. It is an offence to knowingly or recklessly make a false statement in connection with an application. Anyone wishing to make representations regarding this application must give notice in writing to Hull City Council, Licensing Section, 33 Witham, Kingston Upon Hull, HU9 1DB no later than 29.10.2019. A record of the application & register is kept at 33 Witham and may be inspected during office hours.

Adult Services 18+

Adult Massage

KATE** CURVY**
THICK set and curvy 07496161099

◆ **CHRISSEY'S ANGELS**
Special Offer - www.chrissysangels.co.uk
01482 345726

◆ **CLASSY BRUNETTE**
discreet location
07951276888

◆ **DISCRETION.UK**
STAFF Req Tel. 01482 216820

◆ **SEDUCTIONS**
MASSAGE Parlour
Staff req'd 01482 355105

◆ **ALEC** DISCREET**
Mature Male. Services for Ladies or Gents Call 07495693460



Self-Serve online

marketplacelive.co.uk

KINGSTON UPON HULL CITY COUNCIL THE KINGSTON UPON HULL SUNBEAM ROAD (ADDITIONAL PARKING RESTRICTIONS) ORDER 2019

Notice is hereby given that the Kingston upon Hull City Council on the 23rd October 2019 made the above Order under the Road Traffic Regulation Act 1984. The Order will come into operation on the 28th October 2019.

The effect of the Order is to introduce additional no waiting at any time parking restrictions (double yellow lines) on Sunbeam Road.

The purpose of the Order is to alleviate the current situation where parked vehicles on both sides of the road are at times preventing the passage of vehicles, particularly emergency service vehicles.

A copy of the Order and relevant map may be examined during normal office hours at the Reception and Enquiries Office, The Guildhall, The Kingston upon Hull, reference JGO/39800-1391.

If you wish to question the validity of this Order or any provisions contained in it on the grounds that it is not within the powers conferred by the Road Traffic Regulation Act 1984, as amended, or on the grounds that any requirement of that Act or of any instrument made under it has not been complied with in relation to the Order, you may, within six weeks from the 23rd October 2019, apply to the High court for this purpose. Dated the 24th October 2019

Ian Anderson

Director of Legal Services and Partnerships

KINGSTON UPON HULL CITY COUNCIL THE KINGSTON UPON HULL NORTHELLA DRIVE (ADDITIONAL PARKING RESTRICTIONS) ORDER 2019

Notice is hereby given that the Kingston upon Hull City Council on the 23rd October 2019 made the above Order under the Road Traffic Regulation Act 1984. The Order will come into operation on the 28th October 2019.

The effect of the Order is to introduce additional no waiting at any time parking restrictions (double yellow lines) on Northella Drive.

The purpose of the Order is to alleviate the current situation where indiscriminate parking is causing problems for moving vehicles.

A copy of the Order and relevant map may be examined during normal office hours at the Reception and Enquiries Office, The Guildhall, The Kingston upon Hull, reference JGO/39800-1392.

If you wish to question the validity of this Order or any provisions contained in it on the grounds that it is not within the powers conferred by the Road Traffic Regulation Act 1984, as amended, or on the grounds that any requirement of that Act or of any instrument made under it has not been complied with in relation to the Order, you may, within six weeks from the 23rd October 2019, apply to the High court for this purpose. Dated the 24th October 2019

Ian Anderson

Director of Legal Services and Partnerships

THE EAST RIDING OF YORKSHIRE COUNCIL (PART OF A1034 MARKET PLACE & BROUGH ROAD, SOUTH CAVE) (TEMPORARY PROHIBITION OF THROUGH TRAFFIC) ORDER 2019

East Riding of Yorkshire Council has made an Order the effect of which is to prohibit any person from causing any vehicle to proceed along Part of A1034 Market Place and Brough Road, South Cave between Church Street and Willow Flats. The reason for the closure is to enable the junction improvement works at the South Cave Interchange to be carried out and completed in a manner consistent with ensuring the safety of the public. It is anticipated that the works will be completed within four months.

The alternative route for traffic affected by the Order is via:

- Vehicles wishing to access South Cave travelling east bound on M62: M62 Howden Interchange to Boothferry Roundabout, Thorpe Road, A614 to Shiptonthorpe Roundabout, A1079 to Market Weighton Roundabout, A1034 to South Cave
- Vehicles wishing to access South Cave approaching from the East or from the Humber Bridge: Humber Bridge Roundabout, A164 to Jocks Lodge Intersection, A1079 to Market Weighton Roundabout, A1034 to South Cave
- Vehicles wishing to travel to South Cave from the settlements South West of the South Cave Interchange: Join the M62 Westbound, Howden Interchange to Boothferry Roundabout, Thorpe Road, A614 to Shiptonthorpe Roundabout, A1079 to Market Weighton Roundabout, A1034 to South Cave
- Vehicles wishing to travel to South Cave from the settlements South East of the South Cave Interchange: Join the A63 Eastbound Carriageway towards Hull at either Welton or Melton Interchange, A15 Boothferry Road, Humber Bridge Roundabout, A164 to Jocks Lodge Intersection, A1079 to Market Weighton Roundabout, A1034 to South Cave.

The road will be open at all times to pedestrians and for vehicular access to properties directly affected by the closure and for the emergency services.

The Order will commence 4 November 2019, and continue in force for a period not exceeding 18 months or until the works which it is proposed to carry out have been completed, whichever is the earlier.

Further information can be obtained from Highways Customer Care, tel (01482) 393939. Ref:AEB. Dated 24 October 2019

Mathew Buckley • Solicitor • Head of Legal & Democratic Services
East Riding of Yorkshire Council
East Riding of Yorkshire Council will, on request, provide this document in Braille, audio or large print format.
If English is not your first language and you would like a translation of this document, please telephone (01482) 393939.

24/7

Any item any price free online

marketplacelive.co.uk

Your local place to buy and sell

Local pick up, what a great idea

Public Notices

Public Notices

SECTION 47 (6) OF THE PLANNING ACT 2008 SOUTH HUMBER BANK ENERGY CENTRE PROJECT NOTICE PUBLICISING THE STATEMENT OF COMMUNITY CONSULTATION

Notice is hereby given that EP Waste Management Limited (the 'Applicant') proposes to apply to the Secretary of State for Business, Energy and Industrial Strategy for development consent under the Planning Act 2008 (the 'PA 2008') to authorise the construction, operation and maintenance of a proposed energy from waste facility ('EFW') with a capacity of up to 95 megawatts ('MW') gross electrical output and associated development (the 'Proposed Development').

The site (the 'Site') for the Proposed Development is located on land at the South Humber Bank Power Station site, South Marsh Road, near Stallingborough, DN41 8BZ.

Full planning permission under the Town and Country Planning Act 1990 was granted by North East Lincolnshire Council, the Local Planning Authority, on 12 April 2019 (the 'Planning Permission') for an EFW facility with a capacity of up to 49.9 MW (the 'Consented Development') at the Site.

Since the Planning Permission was granted the Applicant has been assessing potential opportunities to improve the efficiency of the Consented Development and is therefore now proposing an EFW facility with a capacity of up to 95 MW. This means that it is classed as a nationally significant infrastructure project, which requires development consent under the PA 2008.

No changes are proposed to the maximum building dimensions and fuel throughput that were approved by the Planning Permission and assessed as part of the Environmental Impact Assessment that accompanied the planning application submitted to the Local Planning Authority.

The Applicant has a duty to consult the local community under Section 47 of the PA 2008 and has produced a Statement of Community Consultation ('SoCC') setting out how the consultation will be undertaken. This notice outlines when and where a copy of the SoCC can be inspected.

The SoCC may be inspected free of charge from 17 October 2019 at the venues detailed in this notice and on the project website at: <https://www.shbenergycentre.co.uk/>

Requests for a hard copy of the SoCC should be made by:

- Post: SHBEC Consultation, c/o DWD, 6 New Bridge Street, London, EC4V 6AB
- Email: consultation@shbenergycentre.co.uk

SOCC INSPECTION VENUES	
VENUE DETAILS	OPENING HOURS
Immingham Library , Pelham Rd, Immingham, DN40 1QF	Mon, Tues, Thurs & Fri: 8.30am to 5.30pm Wed & Sun: Closed Sat: 9am to 1pm
Europarc Innovation Centre , Innovation Way, Europarc, Grimsby DN37 9TT	Mon, Tues, Wed, Thurs & Fri: 8.30am to 4.30pm Sat & Sun: Closed
North East Lincolnshire Council , ENGIE, New, Oxford House, George Street, Grimsby, DN31, 1HB	Mon, Tues, Wed, Thurs, Fri: 8.30am to 4.30pm Sat & Sun: Closed

Public consultation events, at which people will be able to find out more about the Proposed Development, will be held at the following venues in November 2019:

PUBLIC CONSULTATION VENUES	
VENUE DETAILS	DATE AND TIME
Europarc Innovation Centre , Innovation Way, Europarc, Grimsby DN37 9TT	Tues 12th November 12:30pm - 5:15pm
Stallingborough Village Hall , Station Road, Stallingborough, DN41 8AP	Weds 13th November 1:15pm - 5:30pm
Healing Manor Hotel , Stallingborough Rd, Healing, Grimsby DN41 7QF	Thurs 14th November 2:30pm - 8pm

Venue opening hours may differ on public holidays and may be subject to change by the organisations that operate them and should be checked before attending.

Goods Vehicle Operator's Licence

Overhall Contractors Ltd of 16 Carr Lane, Thealby, Scunthorpe, Lincolnshire, DN15 9AE are applying for an operator licence to operate three vehicles and two trailers. We are applying to use Land at the rear of 16 Carr Lane, Thealby, Scunthorpe, DN15 9AE as an operating centre to operate 3 vehicles and two trailers.

Owners or occupiers of land (including buildings) near the operating centre(s) who believe that their use or enjoyment of that land would be affected, should make written representations to the Traffic Commissioner at Hillcrest House, 386 Harehills Lane, Leeds, LS9 6NF, stating their reasons, within 21 days of this notice. Representatives must at the same time send a copy of their representations to the applicant at the address given at the top of this notice. A Guide to Making Representations is available from the Traffic Commissioner's office.

NORTH LINCOLNSHIRE COUNCIL ROAD TRAFFIC REGULATION ACT 1984 SECTION 14(3) TEMPORARY PROHIBITION OF THROUGH TRAFFIC GARDEN STREET, BRIGG

North Lincolnshire Council hereby gives notice that no person shall cause any vehicle to proceed along Garden St, Brigg 29th Oct-4th Nov 2019 (but varied if necessary to take account of any unforeseen circumstances) 8am-5pm each day. The closure is required to repair a leaking stop tap. The diversion route is Cross St, Wrawby St, Queen St.

Dated this 17th day of October 2019

W S Bell - Head of Legal & Democracy
Church Square House
30-40 High Street, Scunthorpe

Goods Vehicle Operator's Licence

Motaline Limited of 40 Holme Lane, Bottesford, Scunthorpe, North Lincolnshire, DN16 3RB is applying to change an existing licence as follows: To keep an extra 0 goods vehicles and 16 trailers at the operating centre at Lebus Furniturs Limited, Dunlop Way, Queensway Industrial Estate, Scunthorpe North, Lincolnshire, DN16 3RN.

Owners or occupiers of land (including buildings) near the operating centre(s) who believe that their use or enjoyment of that land would be affected, should make written representations to the Traffic Commissioner at Hillcrest House, 386 Harehills Lane, Leeds, LS9 6NF, stating their reasons, within 21 days of this notice. Representatives must at the same time send a copy of their representations to the applicant at the address given at the top of this notice. A Guide to Making Representations is available from the Traffic Commissioner's office.

NORTH LINCOLNSHIRE COUNCIL
Town and Country Planning (Development Management Procedure) (England) Order 2015 - Notice under Article 15
Planning (Listed Building and Conservation Area) Regulations & Act 1990
Town and Country Planning Act 1990

Notice is hereby given that the Council has received the following applications which either affect a listed building, conservation area, is a major development or represents a departure from the Local Plan. Details are available at the Civic Centre, Ashby Road, Scunthorpe DN16 1AB or at www.northlincs.gov.uk/planning. Comments should be made within 21 days of this notice, preferably online or by email at planning@northlincs.gov.uk.

BARTON: PA/2019/1698
Outline 34 dwellings. 65 Marsh Lane.

KIRTON: PA/2019/1609
Outline up to 12 dwellings. Land south 7a Grayingham Road.

SCUNTHORPE: PA/2019/1669
Variation of PA/2018/1060. Land at Normanby Enterprise Park, Zone 7.

BURTON: PA/2019/1512
Replace windows. 36 High Street.

BELTON: PA/2019/1608
Change use to B1/B8. Land at Sandtoft Industrial Estate.

BROUGHTON: PA/2019/1627
Variation of PA/2019/535. Former playing field, Old Broughton Infant School, Brigg Road.

BRIGG: PA/2019/1623
Insert lift windows. 6 Albert Street.

If you do write or email us, please bear in mind that anyone may read your letter and a copy will appear on the council's web site (personal details will be removed before being uploaded). In the event of any appeal, representations will be forwarded to the Department for Communities and Local Government and the appellant unless a contrary wish is clearly expressed.

Development Management

NORTH LINCOLNSHIRE COUNCIL ROAD TRAFFIC REGULATION ACT 1984 SECTION 14(3) TEMPORARY PROHIBITION OF THROUGH TRAFFIC CROSS CARR ROAD, HIBALDSTOW

North Lincolnshire Council hereby gives notice that no person shall cause any vehicle to proceed along Cross Carr Road, Hibaldstow 24th-31st Oct 2019 (but varied if necessary to take account of any unforeseen circumstances) 7.30am-5.30pm each day. The closure is required for highway improvements. The diversion is South Carr Lane, B1206, Church St, Ings Lane.

Dated this 17th day of October 2019

Church Square House
W S Bell - Head of Legal & Democracy
30-40 High Street, Scunthorpe

NORTH LINCOLNSHIRE COUNCIL ROAD TRAFFIC REGULATION ACT 1984 SECTION 14(3) TEMPORARY PROHIBITION OF THROUGH TRAFFIC INGS LANE, HIBALDSTOW

North Lincolnshire Council hereby gives notice that no person shall cause any vehicle to proceed along Ings Lane, Hibaldstow 7.30am 29th Oct-5.30pm 1st Nov 2019 (but varied if necessary to take account of any unforeseen circumstances). The closure is required for highway improvements. The diversion is Cross Carr Lane, South Carr Lane, South Carr Road, Redbourne Rd, Church St.

Dated this 17th day of October 2019

W S Bell - Head of Legal & Democracy House
Church Square House
30-40 High Street, Scunthorpe

NORTH LINCOLNSHIRE COUNCIL ROAD TRAFFIC REGULATION ACT 1984, SECTION 14 (TEMPORARY CLOSURE OF PUBLIC FOOTPATH 30, BRIGG AND SCABBY) ORDER 2019

Notice is hereby given that North Lincolnshire Council intends not less than seven days from the date of this notice to make an Order the effect of which will be to prohibit any pedestrian from proceeding along that length of Public Footpath 30 from Pool End, Scabby, where the old and new Rivers Ancholme converge at Grid Ref SE9948305722, north along the eastern bank of the River Ancholme New Cut to the A18 Bridge St, Brigg at Grid Ref SE9944606110, a distance of approx 1,270 metres. The closure is required to facilitate safety improvements to the railway line. It will take effect from 4th Nov 2019-5th Feb 2020 inclusive (but varied to take account of any unforeseen circumstances). No suitable diversion is available.

Dated this 17th day of October 2019

W S Bell - Head of Legal & Democracy
Church Square House
30-40 High Street, Scunthorpe

Goods Vehicle Operator's Licence

Turners Solam Ltd of Fordham Road, Newmarket, Suffolk, CB8 7NR is applying to change an existing licence as follows: To add an operating centre to keep 5 goods vehicles and 5 trailers at Dowse Haulage, 12A/B The Flarepath, Blitham Wold Ind Estate, Brigg, DN20 0SP. Owners or occupiers of land (including buildings) near the operating centre who believe that their use or enjoyment of that land would be affected, should make written representations to the Traffic Commissioner at Hillcrest House, 386 Harehills Lane, Leeds LS9 6NF stating their reasons, within 21 days of this notice. Representatives must at the same time send a copy of their representations to the applicant at the address given at the top of this notice. A Guide to Making Representations is available from the Traffic Commissioner's Office.

Legal Notices

VALERIE ANN WATSON (Deceased)

Pursuant to the Trustee Act 1925 any persons having a claim against or an interest in the Estate of the aforementioned deceased, late of 223 Connamore Road Grimsby North East Lincolnshire DN32 9NU, who died on 26/08/2019, are required to send particulars thereof in writing to the undersigned Solicitors on or before 27/12/2019, after which date the Estate will be distributed having regard only to claims and interests of which they have had notice.

WILKIN CHAPMAN SOLICITORS
Cartgate House
28 Chantry Lane Grimsby
North East Lincolnshire DN31 2LJ
T568434

STANLEY VICTOR COCKRAM (Deceased)

Pursuant to the Trustee Act 1925 any persons having a claim against or an interest in the Estate of the aforementioned deceased, late of 57 Radcliffe Road Healing DN41 1NG, who died on 18/05/2019, are required to send particulars thereof in writing to the undersigned Solicitors on or before 27/12/2019, after which date the Estate will be distributed having regard only to claims and interests of which they have had notice.

WILKIN CHAPMAN LLP
Cartgate House
28 Chantry Lane Grimsby
North East Lincolnshire DN31 2LJ
T568626



It's time to think about booking online

marketplacelive.co.uk
Your local place to buy and sell


Local pick up, what a great idea

marketplacelive.co.uk

24/7

marketplacelive.co.uk



Self-Serve online

Any item any price free online

Public Notices

Public Notices

SECTION 47 (6) OF THE PLANNING ACT 2008 SOUTH HUMBER BANK ENERGY CENTRE PROJECT NOTICE PUBLISHING THE STATEMENT OF COMMUNITY CONSULTATION

Notice is hereby given that EP Waste Management Limited (the 'Applicant') proposes to apply to the Secretary of State for Business, Energy and Industrial Strategy for development consent under the Planning Act 2008 (the 'PA 2008') to authorise the construction, operation and maintenance of a proposed energy from waste facility ('EFW') with a capacity of up to 95 megawatts ('MW') gross electrical output and associated development (the 'Proposed Development').

The site (the 'Site') for the Proposed Development is located on land at the South Humber Bank Power Station site, South Marsh Road, near Stallingborough, DN41 8BZ.

Full planning permission under the Town and Country Planning Act 1990 was granted by North East Lincolnshire Council, the Local Planning Authority, on 12 April 2019 (the 'Planning Permission') for an EFW facility with a capacity of up to 49.9 MW (the 'Consented Development') at the Site.

Since the Planning Permission was granted the Applicant has been assessing potential opportunities to improve the efficiency of the Consented Development and is therefore now proposing an EFW facility with a capacity of up to 95 MW. This means that it is classed as a nationally significant infrastructure project, which requires development consent under the PA 2008.

No changes are proposed to the maximum building dimensions and fuel throughput that were approved by the Planning Permission and assessed as part of the Environmental Impact Assessment that accompanied the planning application submitted to the Local Planning Authority.

The Applicant has a duty to consult the local community under Section 47 of the PA 2008 and has produced a Statement of Community Consultation ('SoCC') setting out how the consultation will be undertaken. This notice outlines when and where a copy of the SoCC can be inspected.

The SoCC may be inspected free of charge from 17 October 2019 at the venues detailed in this notice and on the project website at: <https://www.shbenergycentre.co.uk/>

Requests for a hard copy of the SoCC should be made by:

• Post: SHBEC Consultation, c/o DWD, 6 New Bridge Street, London, EC4V 6AB

• Email: consultation@shbenergycentre.co.uk

SoCC INSPECTION VENUES

VENUE DETAILS	OPENING HOURS
Immingham Library , Pelham Rd, Immingham, DN40 1QF	Mon, Tues, Thurs & Fri: 8.30am to 5.30pm Wed & Sun: Closed Sat: 9am to 1pm
Europarc Innovation Centre , Innovation Way, Europarc, Grimsby DN37 9TT	Mon, Tues, Wed, Thurs & Fri: 8.30am to 4.30pm Sat & Sun: Closed
North East Lincolnshire Council , ENGIE, New, Oxford House, George Street, Grimsby, DN31, 1HB	Mon, Tues, Wed, Thurs, Fri: 8.30am to 4.30pm Sat & Sun: Closed

Public consultation events, at which people will be able to find out more about the Proposed Development, will be held at the following venues in November 2019:

PUBLIC CONSULTATION VENUES

VENUE DETAILS	DATE AND TIME
Europarc Innovation Centre , Innovation Way, Europarc, Grimsby DN37 9TT	Tues 12th November 12:30pm - 5:15pm
Stallingborough Village Hall , Station Road, Stallingborough, DN41 8AP	Weds 13th November 1:15pm - 5:30pm
Healing Manor Hotel , Stallingborough Rd, Healing, Grimsby DN41 7QF	Thurs 14th November 2:30pm - 8pm

Venue opening hours may differ on public holidays and may be subject to change by the organisations that operate them and should be checked before attending.

ENVIRONMENT AGENCY NAVIGATION RESTRICTION NOTICE RIVER ANCHOLME

22 November 2019 – 16 March 2020
Harlam Hill Lock to South Ferryby Lock

Water levels in the river Ancholme will be lowered for bank maintenance. The following levels relate to the River Ancholme at Glanford Club Brigg.

Restriction

A level of 0.90 meters ODN will be held from 22/11/2019 to 13/01/2020. From 13/01/2020 to 27/01/2020 a level of 0.40 meters ODN at South Ferryby, 0.6 meters ODN at Brigg will be held before raising back up to 0.90 meters ODN.

The level of 0.90 meters ODN will be raised to 1.2 meters ODN from 16/03/2020.

For further information regarding this notice please contact the South Ferryby Lock Keeper on 01652 635219.

You can also contact us at the Environment Agency on 03708 506 506 between 9am and 5pm, Monday to Friday and ask for the Waterways Team in the Lincolnshire & Northamptonshire Area. Irven Forbes, Waterways Manager
15 October 2019

NORTH LINCOLNSHIRE COUNCIL

Temporary Prohibition of Through Traffic Norfolk Avenue, Burton-upon-Stather

North Lincolnshire Council hereby gives notice that no person shall cause any vehicle to proceed along Norfolk Ave 3rd-6th Nov 8am-5pm each day (but varied if necessary to take account of any unforeseen circumstances). The closure is required to install a new water connection. The diversion is High St, Darby Rd.

Dated this 24th day of October 2019

Church Square House W S Bell - Head of Legal & Democracy
30-40 High Street, Scunthorpe

LINCOLNSHIRE COUNTY COUNCIL ROAD TRAFFIC REGULATION ACT 1984 TEMPORARY RESTRICTION TO TRAFFIC (SOMERBY – SOMERBY WOLD LANE)

NOTICE IS HEREBY GIVEN THAT LINCOLNSHIRE COUNTY COUNCIL has made an Order on Somerby Wold Lane to allow for essential maintenance works to be carried out.

The effect of the Order will be to close the road to traffic in the vicinity north east of Bigby Hill.

Access will be maintained to properties on the affected length of road but may be subject to delays. The works are expected to commence on or about 29 October 2019 and continue for approximately 3 days.

The Order will come into operation on 29 October 2019 and will continue in force for a period of 18 months or the completion of the works whichever is the sooner.

The restriction shall only apply during such times and to such extent as shall from time to time be indicated by traffic signs prescribed by the Traffic Signs Regulations and General Directions 2016.

ANDY GUTHERSON
EXECUTIVE DIRECTOR OF PLACE
LINCOLNSHIRE COUNTY COUNCIL

NORTH LINCOLNSHIRE COUNCIL (A18 Crowle-A161 Althorpe)

(Temporary 40mph Speed Limit) Order 2019

Notice is hereby given that North Lincolnshire Council intends not less than seven days from the date of this Notice to make an Order the effect of which will be to impose a temporary 40mph speed limit on that length of the A18 Crowle-A161 Althorpe 6am 11th-10pm 13th Nov 2019 inclusive (but varied to take account of any unforeseen circumstances) while Northern Grid carries out high voltage works.

Dated this 24th day of October 2019
W S Bell - Head of Legal & Democracy
Church Square House
30-40 High Street, Scunthorpe

GOODS VEHICLE
OPERATORS LICENCE
EVER READY MIX CONCRETE LIMITED
of Concrete Works Unit 9 (Rear of Danum Tyres) Wood Carr Lane Belton
DN9 1PN is applying to change an existing licence as follows: To keep an extra 4 goods vehicles and 2 trailers at the operating centre at Concrete Works Unit 9 (Rear of Danum Tyres) Wood Carr Lane Sandholt Industrial Estate Belton DN9 1PN. Owners or occupiers of land (including buildings) near the operating centre(s) who believe that their use or enjoyment of that land would be affected, should make written representations to the Traffic Commissioner at Hillcrest House 386 Harehills Lane Leeds LS9 6NF, stating their reasons, within 21 days of this notice. Representations must at the same time send a copy of their representations to the applicant at the address given at the top of this notice. A Guide to Making Representations is available from the Traffic Commissioner's office. T569310



Find
it local

marketplace.co.uk

TOWN AND COUNTRY PLANNING ACT 1990 PUBLIC INQUIRY

At The Hobbies Centre,
Wesley Road, Scunthorpe, DN16 1SA
On 05 November 2019 at 10.00am

REASON FOR INQUIRY

Appeal by Egon Resources U.K. Limited Relating to the application to North Lincolnshire Council for the retention of Wresle-1 wellsite and access track for the production of hydrocarbons, together with an extension of the site by 0.12 ha for the installation of additional security facilities; site reconfiguration to facilitate the installation of a new impermeable membrane, french drain and surface water interceptor; construction of a new bund, tanker loader plinth etc.

At Lodge Farm, Clapp Gate, Appleby, SCUNTHORPE, DN15 0DB
An Inspector appointed by the Secretary of State will attend at the place, date and time shown above to decide the appeal.

Members of the public may attend the inquiry and, at the Inspector's discretion, express their views. If you or anyone you know has a disability and is concerned about facilities at the inquiry venue, you should contact the council to confirm that suitable provisions are in place. Documents relating to the appeal can be viewed on the council's website or at the council's offices by prior arrangement.

Planning Inspectorate References: APPY2003/W/19/3221694

Contact point at the Planning Inspectorate: Helen Skinner, Room 3/1, Temple Quay House, 2 The Square, Temple Quay, Bristol, BS1 6PN
Tel: 0303 444 5531

Where applicable, you can use the internet to submit documents, to see information and to check the progress of cases through GOV.UK. The address of the search page is - <https://www.gov.uk/appeal-planning-inspectorate>

Legal Notices

BRIAN ALFRED OLIVER (Deceased)

Pursuant to the Trustee Act 1925 any persons having a claim against or an interest in the Estate of the aforementioned deceased, late of 23 Widdford Road Cleethorpes DN35 0QD, who died on 03/03/2019, are required to send particulars thereof in writing to the undersigned Solicitors on or before 03/01/2020, after which date the Estate will be distributed having regard only to claims and interests of which they have had notice.

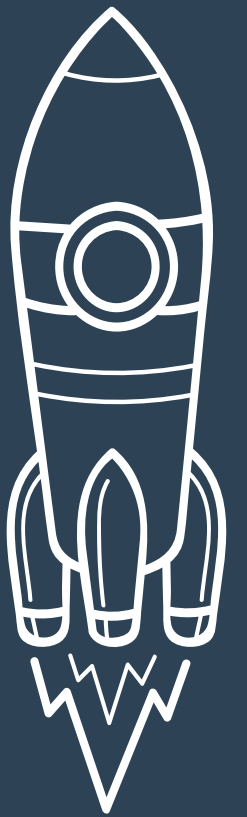
K P SOLICITORS LTD
65 Chapel Street Belvoir
Derbyshire DE56 1AR T569056

MARGARET THERESA ALLISON (Deceased)

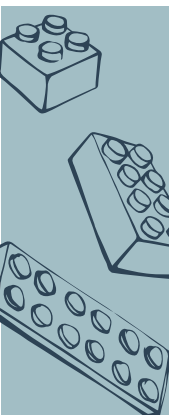
Pursuant to the Trustee Act 1925 any persons having a claim against or an interest in the Estate of the aforementioned deceased, late of 34 Edward Street, Cleethorpes, North Lincolnshire DN35 8PS, who died on 20/04/2019, are required to send particulars thereof in writing to the undersigned on or before 03/01/2020, after which date the Estate will be distributed having regard only to claims and interests of which they have had notice.

CO-OP LEGAL SERVICES LIMITED
Azcet 650 Azcet West Almondsbury
Bristol BS32 4SD T569356
(Ref: KDR/4741987P/Allison)

Any item any price free online



Find an out
of this world
bargain online



The best place
to sell your
brick-a-brack

marketplace.co.uk
Your local place to buy and sell

marketplace.co.uk
Your local place to buy and sell



ROAD TRAFFIC REGULATION ACT 1984 - SECTION 14

THE M180 MOTORWAY (JUNCTION 4) (TEMPORARY PROHIBITION OF TRAFFIC)

NOTICE IS HEREBY GIVEN THAT Highways England Company Limited has made an Order on the M180 Motorway, in the District of North Lincolnshire, to enable survey works to be carried out in safety.

The works are expected to start on Monday 28 October 2019 for 1 night, or until completed, and will take place between 8pm and 6am.

The effect of the Order will be to close the M180 eastbound entry slip road at Junction 4 (Broughton Interchange), during which times a suitably signed alternative route will be available.

Traffic signs will indicate the extent of the prohibition (which will not apply to emergency service vehicles or vehicles being used in connection with the said works or for winter maintenance or traffic officer purposes). The Order comes into force on 27 October 2019 and has a maximum duration of eighteen months.

The contact for any further information about this notice is Jill Thornhill, Tel: 0300 470 2593, e-mail: jill.thornhill@highwaysengland.co.uk

RICHARD FOXTON, Highways England, 3 South, Lateral, 8 City Walk, LEEDS LS11 9AT.

NORTH LINCOLNSHIRE COUNCIL (Various Roads, Brigg) (Brigg 10K Poppy Race) (Temporary Prohibition of Traffic) Order 2019

Notice is hereby given that North Lincolnshire Council, being satisfied that the provisions set out in Section 16A of the Road Traffic Regulation Act 1984 apply, has made an Order under that Section on the occasion of the Brigg 10K Poppy Race. The Order will take effect on Sunday 27th Oct 2019 and will have the effect of temporarily prohibiting any vehicle from proceeding along the following Streets/Roads in Brigg between 9.10am and 11.30pm that day - from the junction of St Clare's Walk, Bigby St, Elwes St, Cadney Rd, Brigg Rd to the Bridge Lane junction, Cadney. The diversion is Bigby Rd, Bigby High Rd, B1434, Main St, Cadney Rd.

Dated this 24th day of October 2019
W S Bell - Head of Legal & Democracy
Church Square House
30-40 High Street, Scunthorpe

NORTH LINCOLNSHIRE COUNCIL

(Development Management Procedure)

(England) Order 2015 -

Notice under Article 15

Planning Listed Building and

Conservation Area Regulations & Act 1990

Town and Country Planning Act 1990

Notice is hereby given that the council has

received the following applications which

either affect a listed building, conservation

area, is a major development or represents

a departure from the Local Plan. Details

are available at Church Square House,

30-40 High Street, Scunthorpe DN15 0NL

or at www.northlincs.gov.uk/planning

Comments should be made within 21 days

of this notice, preferably online or by email

at planning@northlincs.gov.uk

South Killingholme PA/2019/1583

Very condition 1 of PA/2017/22

Land east of Rosper Road

Owston Ferry PA/2019/1668

Erect a dwelling

Baron Station Road

Brigg PA/2019/1635

Replace windows

First-floor flat, 5 Bigby Street

Seawley PA/2019/1720

Replacement greenhouse roof

The Hall, Vicarage Lane

Haxey PA/2019/1673

Outline for a dwelling

Land adjacent 9 The Willows, Nethergate,

Westwoodside

Owston Ferry PA/2019/1739

Demolish listed building

Baron Station Road

Crowle PA/2019/1710

Replace noticeboard

St Oswald's Church, Church Street

Brigg PA/2019/1756

Change of use

Unit 2 Nethorpe Business Court,

Bridge Street

Crowle PA/2019/1727

Erect footbridge and bird hide

Land at Crowle Moor, Access track

alongside Moor Middle Drain

If you do write or email us, please bear in

mind that anyone may read your letter and

a copy will appear on the council's web site

(personal details will be removed before

being uploaded). In the event of any appeal,

representations will be forwarded to the

Department for Communities and Local

Government and the applicant unless a

contrary wish is clearly expressed.

Development Management

Any item
any price
free online

FISH4JOBS

Search 1000s of jobs online now.

0333 234 2045 • fish4north@trinitymirror.com Fish4jobs.co.uk

APPENDIX 2.2: SECTION 48 PA 2008 (AND APFP REGULATION 4(2)) – DUTY TO PUBLICISE

South Humber Bank Energy Centre Project

The Planning Act 2008 – Section 48

The Infrastructure Planning (Applications: Prescribed Forms and Procedure) Regulations 2009 – Regulation 4

The Infrastructure Planning (Environmental Impact Assessment) Regulations 2017 – Regulation 13

NOTICE OF PROPOSED APPLICATION FOR A DEVELOPMENT CONSENT ORDER FOR THE SOUTH HUMBER BANK ENERGY CENTRE PROJECT

1. Notice is hereby given that EP Waste Management Ltd ('EPWM'), a subsidiary of EP UK Investments Limited, whose registered office is Part Ground Floor, Paradigm Building 3175 Century Way, Thorpe Park, Leeds LS15 8ZB, intends to submit an application ('the Proposed Application') to the Secretary of State for Business, Energy and Industrial Strategy for a Development Consent Order ('DCO') under Section 37 of the Planning Act 2008 (the '2008 Act') to authorise the construction, operation and maintenance of a new energy from waste ('EfW') power station with a capacity of up to 95 megawatts ('MW') gross output and associated development (together the 'Project').

The Project

2. The site for the Project (the 'Site') would be located primarily on land within the boundary of the South Humber Bank Power Station Site, South Marsh Road, Near Stallingborough, DN41 8BZ, at grid reference TA 523000 413309. The Site extends to approximately 25 hectares.
3. The proposed DCO would, amongst other matters, authorise the construction, operation and maintenance of:
 - 3.1 an EfW power station, comprising fuel reception and storage facilities, consisting of vehicle ramps, a tipping hall, shredder, fuel storage bunker and crane; a combustion system housed within a boiler hall, consisting of two combustion lines and associated boilers; a steam turbine and generator housed within a turbine hall; a bottom ash handling system, including ash storage; a flue gas treatment system, including residue and reagent silos; emissions stacks and associated emissions monitoring systems; a cooling system comprising fin fan coolers; an air-cooled condenser; a compressed air system; an ammonia tank; a process effluent storage tank; a demineralised water treatment plant and demineralised water storage tanks; an electrical switchyard, including transformers; auxiliary diesel generators and diesel storage tanks; pipe racks, pipe runs and cabling; administration block, including control room, workshop and stores; fire water pump house and fire water tank; vehicle access road from South Marsh Road; internal vehicle access roads, crossings and pedestrian and cycle facilities and routes; security gatehouse, barriers and enclosures; weighbridges; car parking; heavy goods vehicle holding area and driver welfare block; and a surface water attenuation pond;
 - 3.2 a connection to the electricity grid network;
 - 3.3 a connection to the gas grid network; and
 - 3.4 other associated development, including external lighting; fencing and boundary treatment; security measures; surface and foul water drainage systems; water, electricity, gas and other utilities connections; hard and soft landscaping; biodiversity mitigation and enhancement measures; temporary contractor facilities and construction laydown areas; vehicle access roads, crossings, parking and pedestrian and cycle facilities and routes.

Environmental Impact Assessment

4. The Applicant has notified the Secretary of State in writing under Regulation 8(1)(b) of The Infrastructure Planning (Environmental Impact Assessment) Regulations 2017 (as amended) (the 'EIA Regulations') that it intends to provide an Environmental Statement ('ES') in respect of the Project. The Project is therefore 'EIA development' for the purposes of the EIA Regulations and an ES will form part of the Proposed Application.

5. Information so far compiled about the Project's environmental impacts is contained in a Preliminary Environmental Information Report ('PEIR') and summarised in a Non-technical Summary. The PEIR and other documents relating to the Project, including plans and maps showing the nature and location of the Project ('the Consultation Documents'), are available to view or download free of charge from the Project website: <https://www.shbenergycentre.co.uk/> and for inspection free of charge from 31 October to 13 December 2019 at the following locations during the hours set out (opening hours may be subject to change):

Locations	Opening Times
Immingham Library , Pelham Rd, Immingham, DN40 1QF	Mon, Tues, Thurs & Fri: 8.30am to 5.30pm Wed & Sun: Closed Sat: 9am to 1pm
Europarc Innovation Centre , Innovation Way, Europarc, Grimsby DN37 9TT	Mon, Tues, Wed, Thurs & Fri: 8.30am to 4.30pm Sat & Sun: Closed
North East Lincolnshire Council , ENGIE, New Oxford House, George Street, Grimsby, DN31 1HB	Mon, Tues, Wed, Thurs, Fri: 8:30am to 4:30pm Sat & Sun: Closed

6. A hard copy of the Consultation Documents is available on request for a maximum copying charge of £150.00. Hard copies of individual documents are also available on request. An electronic copy of the Consultation Documents (USB or CD) is available on request for a charge of £15.00. The documents can be obtained by writing to: SHBEC Consultation, c/o DWD, 6 New Bridge Street, London, EC4V 6AB or emailing consultation@shbenergycentre.co.uk.
7. If you wish to respond to this notice, or make representations in respect of the Project, these should be sent to the Applicant. Please include your name and an address where any correspondence relating to the Project can be sent. Representations may be submitted in the following ways:

Post: SHBEC Consultation, c/o DWD, 6 New Bridge Street, London, EC4V 6AB

Email: consultation@shbenergycentre.co.uk

Website: via an online survey form on the Project website: <https://www.shbenergycentre.co.uk/>

8. Any comments received will be analysed by the Applicant and any appointed agent of the Applicant, and copies may be made available in due course to the Secretary of State, the Planning Inspectorate and other relevant statutory authorities so that your comments can be noted. We will request that your personal details are not placed on public record and these will be held securely by the Applicant in accordance with the Data Protection Act 1998 and the General Data Protection Regulation and used solely in connection with the consultation process and subsequent DCO application and, except as noted above, will not be passed to third parties.
9. Please note that all responses must be received by the Applicant no later than 11:59pm on 13 December 2019.
10. If you would like any further information in respect of this notice or the Project, please contact the Project team using one of the contact methods described above.

EP Waste Management Ltd

Public Notices

Public Notices

South Humber Bank Energy Centre Project
The Planning Act 2008 - Section 48
The Infrastructure Planning (Applications: Prescribed Forms and Procedure) Regulations 2009 - Regulation 4
The Infrastructure Planning (Environmental Impact Assessment) Regulations 2017 - Regulation 13
NOTICE OF PROPOSED APPLICATION FOR A DEVELOPMENT CONSENT ORDER FOR THE SOUTH HUMBER BANK ENERGY CENTRE PROJECT

1. Notice is hereby given that EP Waste Management Ltd ('EPWM'), a subsidiary of EP UK Investments Limited, whose registered office is Part Ground Floor, Paradigm Building 3175 Century Way, Thorpe Park, Leeds LS15 8ZB, intends to submit an application ('the Proposed Application') to the Secretary of State for Business, Energy and Industrial Strategy for a Development Consent Order ('DCO') under Section 37 of the Planning Act 2008 ('the 2008 Act') to authorise the construction, operation and maintenance of a new energy from waste ('EFW') power station with a capacity of up to 95 megawatts ('MW') gross output and associated development (together the 'Project').

The Project

2. The site for the Project (the 'Site') would be located primarily on land within the boundary of the South Humber Bank Power Station Site, South Marsh Road, Near Stallingborough, DN41 8BZ, at grid reference TA 523000 413300. The Site extends to approximately 25 hectares.

3. The proposed DCO would, amongst other matters, authorise the construction, operation and maintenance of:

3.1 an EFW power station, comprising fuel reception and storage facilities, consisting of vehicle ramps, a tipping hall, shredder, fuel storage bunker and crane; a combustion system housed within a boiler hall, consisting of two combustion lines and associated boilers; a steam turbine and generator housed within a turbine hall; a bottom ash handling system, including ash storage; a flue gas treatment system, including residue and reagent silos; emissions stacks and associated emissions monitoring systems; a cooling system comprising fin fan coolers; an air-cooled condenser; a compressed air system; an ammonia tank; a process effluent storage tank; a demineralised water treatment plant and demineralised water storage tanks; an electrical switchyard, including transformers; auxiliary diesel generators and diesel storage tanks; pipe racks, pipe runs and cabling; administration block, including control room, workshop and stores; fire water pump house and fire water tank; vehicle access road from South Marsh Road; internal vehicle access roads, crossings and pedestrian and cycle facilities and routes; security gatehouse, barriers and enclosures; weighbridges; car parking; heavy goods vehicle holding area and driver welfare block; and a surface water attenuation pond.

3.2 a connection to the electricity grid network;

3.3 a connection to the gas grid network; and

3.4 other associated development, including external lighting; fencing and boundary treatment; security measures; surface and foul water drainage systems; water, electricity, gas and other utilities connections; hard and soft landscaping; biodiversity mitigation and enhancement measures; temporary contractor facilities and construction laydown areas; vehicle access roads, crossings, parking and pedestrian and cycle facilities and routes.

Environmental Impact Assessment

4. The Applicant has notified the Secretary of State in writing under Regulation 8(1)(b) of The Infrastructure Planning (Environmental Impact Assessment) Regulations 2017 (as amended) ('the EIA Regulations') that it intends to provide an Environmental Statement ('ES') in respect of the Project. The Project is therefore 'EIA development' for the purposes of the EIA Regulations and an ES will form part of the Proposed Application.

5. Information so far compiled about the Project's environmental impacts is contained in a Preliminary Environmental Information Report ('PEIR') and summarised in a Non-technical Summary. The PEIR and other documents relating to the Project, including plans and maps showing the nature and location of the Project ('the Consultation Documents'), are available to view or download free of charge from the Project website: <https://www.shbenergycentre.co.uk/> and for inspection free of charge from 31 October to 13 December 2019 at the following locations during the hours set out (opening hours may be subject to change):

Locations	Opening Times
Immingham Library , Pelham Rd, Immingham, DN40 10F	Mon, Tues, Thurs & Fri: 8.30am to 5.30pm Wed & Sun: Closed Sat: 9am to 1pm
Europarc Innovation Centre , Innovation Way, Europarc, Grimsby DN37 9TT	Mon, Tues, Wed, Thurs & Fri: 8.30am to 4.30pm Sat & Sun: Closed
North East Lincolnshire Council , ENGIE, New Oxford House, George Street, Grimsby, DN31 1HB	Mon, Tues, Wed, Thurs, Fri: 8.30am to 4.30pm Sat & Sun: Closed

6. A hard copy of the Consultation Documents is available on request for a maximum copying charge of £150.00. Hard copies of individual documents are also available on request. An electronic copy of the Consultation Documents (USB or CD) is available on request for a charge of £15.00. The documents can be obtained by writing to: SHBEC Consultation, c/o DWD, 6 New Bridge Street, London, EC4V 6AB or emailing consultation@shbenergycentre.co.uk.

7. If you wish to respond to this notice, or make representations in respect of the Project, these should be sent to the Applicant. Please include your name and an address where any correspondence relating to the Project can be sent. Representations may be submitted in the following ways:

Post: SHBEC Consultation, c/o DWD, 6 New Bridge Street, London, EC4V 6AB

Email: consultation@shbenergycentre.co.uk

Website: via an online survey form on the Project website: <https://www.shbenergycentre.co.uk/>

8. Any comments received will be analysed by the Applicant and any appointed agent of the Applicant, and copies may be made available in due course to the Secretary of State, the Planning Inspectorate and other relevant statutory authorities so that your comments can be noted. We will request that your personal details are not placed on public record and these will be held securely by the Applicant in accordance with the Data Protection Act 1998 and the General Data Protection Regulation and used solely in connection with the consultation process and subsequent DCO application and, except as noted above, will not be passed to third parties.

9. Please note that all responses must be received by the Applicant no later than 11:59pm on 13 December 2019.

10. If you would like any further information in respect of this notice or the Project, please contact the Project team using one of the contact methods described above.

EP Waste Management Ltd

NORTH EAST LINCOLNSHIRE COUNCIL
Publicity of Planning & Related Applications

The applications set out in the Schedule below are required to be given wider publicity and public comment is invited. Copies of the applications can be viewed on-line at <http://www.nelincs.gov.uk/>

The reason for publicising each application is indicated after the application number as follows:-

(01) Major Development; (03) Development affecting the setting of a Listed Building; (05) The proposed development would affect a public right of way; (09) Development affecting the Wellow Conservation Area; (17) Development affecting the Bradford Avenue Conservation Area; (22) Development affecting tree(s) subject to tree preservation orders

SCHEDULE

DM/0925/19/FUL Application for the variation of Condition 2 (Approved Plans) as approved on DM/0474/19/FUL (Remove existing garage and car port and erect orangery to side/rear) to erect extension to side with roof lantern, 1B Weelsby Road, Grimsby - (09)

DM/0963/19/FUL Variation application following DM/0665/18/FUL (Variation application of condition 11 (Approved Plans) to amend the layout and house type and details in discharge of conditions 2 (Surface and foul drainage), 5 (external materials), 6 (garage foundation details), 7 (archaeology) and 8 (landscaping) pursuant to DM/0982/15/FUL (Erection of one new dwelling) to change the materials of the proposed dwelling from brick to cedar weatherboard and cream render, land Parcel 3, Green Lane, Briggsley - (03)(22)

DM/0940/19/FUL Variation of Condition 9 (Occupancy) attached to planning application DM/0991/18/FUL (Change of use of land from field to 18 holiday cabins with vehicle parking in association with the existing commercial lake, landscaping and environmental enhancements including enlargement of balancing pond, Willow Lakes Ashby Hill Top Farm, Barton Street, Ashby Cum Fenby - (01)(05)

DM/0859/19/FUL Demolish existing garage and erect single storey detached wooden cabin in back garden, 56 Lindum Road, Cleethorpes - (17)

DM/0926/19/REM Reserved matters application to erect one dwelling and detached garage to consider access, appearance, landscaping, layout and scale and details in discharge of conditions 3 (Surface and Foul Drainage) and 4 (Construction Management Plan) following application DM/0535/17/OUT (Outline application to erect one dwelling and detached garage with access to be considered), land at 15 Humberston Avenue, Humberston - (22)

Comments should be made:

- On line at <http://www.nelincs.gov.uk/> or by post to:
- Development Management Services, New Oxford House, 2 George Street, Grimsby, DN31 1HB by **24th November 2019**

Please Note: Signatures, telephone numbers and e-mail addresses attached to representations will not be shown on the Council's web site but your name and address will be displayed. Anonymous representations will not be taken into account ie if no name and address are supplied.

Director of Economy and Growth - Place
31st October 2019

THE BOROUGH OF NORTH EAST LINCOLNSHIRE
THE NORTH EAST LINCOLNSHIRE BOROUGH COUNCIL
(FRIARGATE LEVEL CROSSING, CARTERGATE, GRIMSBY NR0470 - TTRO 19-106)
(TEMPORARY PROHIBITION OF TRAFFIC) ORDER 2019

NOTICE IS HEREBY GIVEN that the North East Lincolnshire Borough has made, an Order, the effect of which will be to prohibit any vehicle, pedestrian or cycle from proceeding across the below mentioned Level Crossing on the dates and times specified:

NR0470 - Friargate Level Crossing, Cartergate, Grimsby
 Between 23:00hrs Saturday 2 November and 09:30hrs Sunday 3 November 2019

This temporary prohibition is required in order to safely facilitate essential reballast works at the level crossing. The dates and times above are correct at the point of print however should adverse weather or any other conditions impact the works they will go ahead when it is safe to do so. Diversion routes will be signposted and published online at: www.roadworks.org and <https://www.nelincs.gov.uk/category/public-notice/>

The Order will come into operation on **Saturday 2 November 2019**, and will continue in force for a period not exceeding eighteen months unless extended for a further period by the Secretary of State for Transport, or until completion of the works (whichever is the earlier). The road will be reopened as soon as possible.

A copy of the sealed Order may be inspected online at the Municipal Offices, Town Hall Square, Grimsby during normal office hours. For further information you may, if you wish, telephone Network Rails Contractor (01777 705053) for an explanation of the proposals.

Dated this 31 day of October, 2019

Rob G. Walsh
Chief Executive

Municipal Offices
 Town Hall Square
 Grimsby
 DN31 1HU

Legal Notices

EDITH HARRIS (Deceased)
 Pursuant to the Trustee Act 1925 any persons having a claim against or an interest in the Estate of the aforementioned deceased, late of Norwood House 15A Station Road Gunness Scunthorpe DN15 8SU, who died on 11/05/2019, are required to send particulars thereof in writing to the undersigned Solicitors on or before 10/01/2020, after which date the Estate will be distributed having regard only to claims and interests of which they have had notice.

MASON, BAGGOTT & GARTON
 13/19 Wells Street Scunthorpe
 North Lincolnshire DN15 6HN T569552

LEONARD PHILLIPSON (Deceased)
 Pursuant to the Trustee Act 1925 any persons having a claim against or an interest in the Estate of the aforementioned deceased, late of 16 Wainfleet Road Grimsby North East Lincolnshire DN33 1LD, who died on 01/07/2019, are required to send particulars thereof in writing to the undersigned Solicitors on or before 10/01/2020, after which date the Estate will be distributed having regard only to claims and interests of which they have had notice.

B6 SOLICITORS LLP
 Lauriston House Town Hall Square
 Grimsby DN31 1JB T569942

Any item any price free online

Adult Services 18+

Adult Massage

REGENCY SAUNA
 Open 7 days
 20 Queens Road,
 Immingham DN40 1QR
01469 577741
07827 676394

**STAFF WANTED,
 START IMMEDIATELY!**

Adult Services

VELVETS
 Open Everyday
 New ladies welcome
 Walk-ins welcome
01472 354779

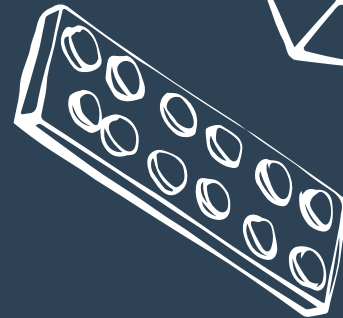
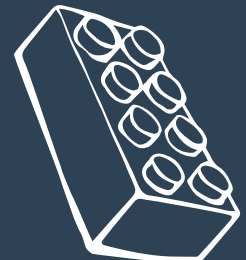
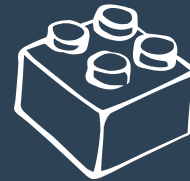
Any item any price free online



Booking online,
 what a great idea

marketplacelive.co.uk
 Your local place to buy and sell

Any item any price free online



The best place
 to **sell** your
 brick-a-brack

marketplacelive.co.uk
 Your local place to buy and sell

Any item any price free online



Love being part of
 something local

marketplacelive.co.uk
 Your local place to buy and sell

Public Notices

Public Notices

South Humber Bank Energy Centre Project
The Planning Act 2008 - Section 48
The Infrastructure Planning (Applications: Prescribed Forms and Procedure) Regulations 2009 - Regulation 4
The Infrastructure Planning (Environmental Impact Assessment) Regulations 2017 - Regulation 13
NOTICE OF PROPOSED APPLICATION FOR A DEVELOPMENT CONSENT ORDER FOR THE SOUTH HUMBER BANK ENERGY CENTRE PROJECT

1. Notice is hereby given that EP Waste Management Ltd ('EPWM'), a subsidiary of EP UK Investments Limited, whose registered office is Part Ground Floor, Paradigm Building 3175 Century Way, Thorpe Park, Leeds LS15 8ZB, intends to submit an application (the 'Proposed Application') to the Secretary of State for Business, Energy and Industrial Strategy for a Development Consent Order ('DCO') under Section 37 of the Planning Act 2008 (the '2008 Act') to authorise the construction, operation and maintenance of a new energy from waste ('EFW') power station with a capacity of up to 95 megawatts ('MW') gross output and associated development (together the 'Project').

2. The site for the Project (the 'Site') would be located primarily on land within the boundary of the South Humber Bank Power Station Site, South Marsh Road, Near Stallingborough, DN41 8BZ, at grid reference TA 523000 413309. The Site extends to approximately 25 hectares.

3. The proposed DCO would, amongst other matters, authorise the construction, operation and maintenance of:

3.1 an EFW power station, comprising fuel reception and storage facilities, consisting of vehicle ramps, a tipping hall, shredder, fuel storage bunker and crane; a combustion system housed within a boiler hall, consisting of two combustion lines and associated boilers; a steam turbine and generator housed within a turbine hall; a bottom ash handling system, including ash storage; a flue gas treatment system, including residue and reagent silos; emissions stacks and associated emissions monitoring systems; a cooling system comprising fin fan coolers; an air-cooled condenser; a compressed air system; an ammonia tank; a process effluent storage tank; a demineralised water treatment plant and demineralised water storage tanks; an electrical switchyard, including transformers; auxiliary diesel generators and diesel storage tanks; pipe racks, pipe runs and cabling; administration block, including control room, workshop and stores; fire water pump house and fire water tank; vehicle access road from South Marsh Road; internal vehicle access roads, crossings and pedestrian and cycle facilities and routes; security gatehouse, barriers and enclosures; weighbridges; car parking; heavy goods vehicle holding area and driver welfare block; and a surface water attenuation pond;

3.2 a connection to the electricity grid network;

3.3 a connection to the gas grid network; and

3.4 other associated development, including external lighting; fencing and boundary treatment; security measures; surface and foul water drainage systems; water, electricity, gas and other utilities connections; hard and soft landscaping; biodiversity mitigation and enhancement measures; temporary contractor facilities and construction laydown areas; vehicle access roads, crossings, parking and pedestrian and cycle facilities and routes.

Environmental Impact Assessment

4. The Applicant has notified the Secretary of State in writing under Regulation 8(1)(b) of The Infrastructure Planning (Environmental Impact Assessment) Regulations 2017 (as amended) (the 'EIA Regulations') that it intends to provide an Environmental Statement ('ES') in respect of the Project. The Project is therefore 'EIA development' for the purposes of the EIA Regulations and an ES will form part of the Proposed Application.

5. Information so far compiled about the Project's environmental impacts is contained in a Preliminary Environmental Information Report ('PEIR') and summarised in a Non-technical Summary. The PEIR and other documents relating to the Project, including plans and maps showing the nature and location of the Project (the 'Consultation Documents'), are available to view or download free of charge from the Project website: <https://www.shbenergycentre.co.uk/> and for inspection free of charge from 31 October to 13 December 2019 at the following locations during the hours set out (opening hours may be subject to change):

Locations	Opening Times
Immingham Library , Pelham Rd, Immingham, DN40 1GF	Mon, Tues, Thurs & Fri: 8.30am to 5.30pm Wed & Sun: Closed Sat: 9am to 1pm
Europarc Innovation Centre , Innovation Way, Grimsby, Grimsby DN57 9TT	Mon, Tues, Wed, Thurs & Fri: 8.30am to 4.30pm Sat & Sun: Closed
North East Lincolnshire Council , ENGIE, New Oxford House, George Street, Grimsby, DN31 1HB	Mon, Tues, Wed, Thurs, Fri: 8.30am to 4.30pm Sat & Sun: Closed

6. A hard copy of the Consultation Documents is available on request for a maximum copying charge of £150.00. Hard copies of individual documents are also available on request. An electronic copy of the Consultation Documents (USB or CD) is available on request for a charge of £15.00. The documents can be obtained by writing to: SHBEC Consultation, c/o DWD, 6 New Bridge Street, London, EC4V 6AB or emailing consultation@shbenergycentre.co.uk.

7. If you wish to respond to this notice, or make representations in respect of the Project, these should be sent to the Applicant. Please include your name and an address where any correspondence relating to the Project can be sent. Representations may be submitted in the following ways:

Post: SHBEC Consultation, c/o DWD, 6 New Bridge Street, London, EC4V 6AB

Email: consultation@shbenergycentre.co.uk

Website: via an online survey form on the Project website: <https://www.shbenergycentre.co.uk/>

8. Any comments received will be analysed by the Applicant and any appointed agent of the Applicant, and copies may be made available in due course to the Secretary of State, the Planning Inspectorate and other relevant statutory authorities so that your comments can be noted. We will request that your personal details are not placed on public record and these will be held securely by the Applicant in accordance with the Data Protection Act 1998 and the General Data Protection Regulation and used solely in connection with the consultation process and subsequent DCO application and, except as noted above, will not be passed to third parties.

9. Please note that all responses must be received by the Applicant no later than 11:59pm on 13 December 2019.

10. If you would like any further information in respect of this notice or the Project, please contact the Project team using one of the contact methods described above.

EP Waste Management Ltd

THE EAST RIDING OF YORKSHIRE COUNCIL
(PART OF MELTON ROAD, HIGH STREET, NORTH FERRIBY)
(TEMPORARY PROHIBITION OF THROUGH TRAFFIC) - ORDER 2019

East Riding of Yorkshire Council has made an Order the effect of which is to prohibit any person from causing any vehicle to proceed along Melton Road, High Street, North Ferry between the junctions of Parklands Drive and Manor House.

The reason for the closure is to enable the proposed replacement of gas mains pipes works, to be carried out and completed in a manner consistent with ensuring the safety of the public. It is anticipated that the works will be completed by 22 November 2019.

The road will be closed to all traffic but access will be maintained at all times to pedestrians, residents and to emergency services. The alternative route for traffic approaching from the west of North Ferry is via A63, Lowthorpe Way, the road from Ferry High Road to Humber Field Roundabout, A15, Ferry High Road, High Street, North Ferry and vice versa.

The alternative route for traffic approaching from the east of North Ferry is via High Street, Ferry High Road, Petuaria Way, A63, Melton Road and vice versa.

The Order will commence on 11 November 2019 and continue in force for a period not exceeding 18 months or until the works which it is proposed to carry out have been completed, whichever is the earlier.

Further information can be obtained from Streetscene Services, tel (01482) 393939, asking for Highways Customer Care. Ref: AB. Dated 7 November 2019.

Mathew Buckley - Solicitor - Head of Legal & Democratic Services
East Riding of Yorkshire Council

East Riding of Yorkshire Council will, on request, provide this document in Braille, audio or large print format.

If English is not your first language and you would like a translation of this document, please telephone (01482) 393939.

Goods Vehicle Operator's Licence

Darron Youngman trading as Retralco LTD of Kaistonn House, Main Road, Gilberdyke, HU15 2SG to keep an extra 0 goods vehicles and 2 trailers at the operating centre at Belby Yard, Main Road, Goole, DN14 7NZ. Owners or occupiers of land (including buildings) near the operating centre(s) who believe that their use or enjoyment of that land would be affected, should make written representations to the Traffic Commissioner at Hillcrest House, 386 Harehills Lane, Leeds, LS9 6NF stating their reasons, within 21 days of this notice. Representors must at the same time send a copy of their representations to the applicant at the address given at the top of this notice. A Guide to Making Representations is available from the Traffic Commissioner's Office.

EAST RIDING OF YORKSHIRE COUNCIL

ROAD TRAFFIC REGULATION ACT 1984

SECTION 14 (2) - TEMPORARY PROHIBITION OF THROUGH TRAFFIC

CHERRY TREE LEVEL CROSSING, BEVERLEY

East Riding of Yorkshire Council hereby gives notice that no person shall cause any vehicle to proceed over Cherry Tree Level Crossing, Beverley commencing

23.30 hours Saturday 23 November 2019 until 23.30 hours Sunday 24 November 2019 and 23.30 hours Sunday 24 November 2019 until 08.00 hours Monday 25 November 2019

to enable essential maintenance works at the level crossing.

The road closure is necessary to enable the works to be carried out in a manner consistent with ensuring the safety of the public.

The alternative route for traffic affected by the closure will be via Cherry Tree Lane, Grovehill Road, Railway Street, New Walkergate, Norwood and Mill Lane, Beverley.

The road will be open at all times for pedestrians, but closed to all vehicles including Emergency Services.

Further information can be obtained from Streetscene Services (Highways), tel (01482) 393939. Ref: JS.

Dated 7 November 2019

Paul Bellotti - Director of Communities & Environment
County Hall, Beverley, East Riding of Yorkshire, HU17 9BA

NOTICE OF VARIATION IN CAR PARK CHARGES PURSUANT TO SECTIONS 35C AND SECTION 46A ROAD TRAFFIC REGULATION ACT 1984

THE EAST RIDING OF YORKSHIRE COUNCIL

ON STREET AND OFF STREET PARKING PLACES, BEVERLEY, DRIFFIELD, GOOLE AND HOWDEN

TAKE NOTICE that East Riding of Yorkshire Council is to suspend Parking Charges in all its Pay and Display off-street Car Parks and on-street parking areas located in Beverley, Driffield, Goole and Howden on the following Saturdays in November and December 2019 (there are no charges on Sundays in these towns):-

1. Saturday 30 November 2019
2. Saturday 7 December 2019
3. Saturday 14 December 2019
4. Saturday 21 December 2019

Please note that parking charges will apply as normal on all other days including 26 December 2019 (Boxing Day), 31 December 2019 (New Years Eve) and 1 January 2020 (New Years Day).

Dated 7 November 2019

Mathew Buckley - Solicitor - Head of Legal & Democratic Services
East Riding of Yorkshire Council

East Riding of Yorkshire Council will, on request, provide this document in Braille, audio or large print format. If English is not your first language and you would like a translation of this document, please telephone (01482) 393939.

THE EAST RIDING OF YORKSHIRE COUNCIL

ROAD TRAFFIC REGULATION ACT 1984

SECTION 14 (1) - TEMPORARY PROHIBITION OF THROUGH TRAFFIC

NORTHGATE, COTTINGHAM (PART)

Notice is hereby given that East Riding of Yorkshire Council intends not less than seven days from the date of this notice to make an Order, the effect of which will be to prohibit any vehicle from proceeding along Northgate, Cotingham (between 47 and 53 Northgate) commencing Tuesday 26 November 2019 to enable the installation of multiple fittings (new water mains connections, washouts, PRVs, valves, Strainers and metres)

The Road Closure is necessary to enable the works to be carried out in a manner consistent with ensuring the safety of the public. The Order is valid for 18 months, but it is anticipated that the works will be completed by 9 December 2019.

The alternative route for traffic affected by this closure will be the remainder of Northgate, Queen's Way, Queen's Gate and Mill Beck Lane, Cotingham. Access will be maintained for Resident's access, Pedestrians and Emergency Services.

Further information can be obtained from Streetscene Services (Highways), tel (01482) 393939. Ref: JS.

Dated: 7 November 2019

Paul Bellotti - Director of Communities & Environment
County Hall, Beverley, East Riding of Yorkshire, HU17 9BA

THE EAST RIDING OF YORKSHIRE COUNCIL

ROAD TRAFFIC REGULATION ACT 1984

SECTION 14 (1) - TEMPORARY PROHIBITION OF THROUGH TRAFFIC

VICTORIA ROAD SOUTH, BEVERLEY (WHOLE EXTENT)

Notice is hereby given that East Riding of Yorkshire Council intends not less than seven days from the date of this notice to make an Order, the effect of which will be to prohibit any vehicle from proceeding along Victoria Road South, Beverley (whole extent) (section fronting Morrisons Supermarket) commencing Monday 25 November 2019 to enable the carriageway resurfacing works to take place.

The Road Closure is necessary to enable the works to be carried out in a manner consistent with ensuring the safety of the public. The Order is valid for 18 months, but it is anticipated that the works will be completed by 28 November 2019.

There is no alternative route for traffic affected by this closure. Access will be maintained for Resident's access, Pedestrians and Emergency Services.

Further information can be obtained from Streetscene Services (Highways), tel (01482) 393939. Ref: JS.

Dated 7 November 2019

Paul Bellotti - Director of Communities & Environment
County Hall, Beverley, East Riding of Yorkshire, HU17 9BA

KINGSTON UPON HULL CITY COUNCIL

THE KINGSTON UPON HULL

HALL ROAD (HAINSWORTH PARK TO COTTINGHAM ROAD)

(20 MPH SPEED LIMIT ZONE) ORDER 2019

Notice is hereby given that the Kingston upon Hull City Council on the 6th November 2019 made the above Order under the Road Traffic Regulation Act 1984. The Order will come into operation on the 11th November 2019.

The effect of the Order is to introduce new traffic calming measures on the section of Hall Road south of Hainsworth Park, to reduce vehicle speeds in the vicinity of Hall Road Academy.

The purpose of the Order is to ensure that vehicle speeds are 20 mph or less within the extent of the traffic calming scheme.

A copy of the Order and relevant map may be examined during normal office hours at the Reception and Enquiries Office, The Guildhall, The Kingston upon Hull, reference JGO/39800-1388.

If you wish to question the validity of this Order or any provisions contained in it on the grounds that it is not within the powers conferred by the Road Traffic Regulation Act 1984, as amended, or on the grounds that any requirement of that Act or of any instrument made under it has not been complied with in relation to the Order, you may, within six weeks from the 6th November 2019, apply to the High court for this purpose.

Dated the 7th November 2019

Ian Anderson

Director of Legal Services and Partnerships

Goods Vehicle Operator's Licence

Humbeside Haulage Ltd of 40 Bond Street, Hedon, East Riding, HU12 8NY is applying to change an existing licence as follows to add an operating centre to keep 6 goods vehicles & 6 trailers at Melton Industrial Park, Melton, North Ferry, HU14 3HB and JJB Haulage Ltd, of the above correspondence address, is applying to change an existing licence to add the above operating centre, at Melton Industrial Park, Melton, as an operating centre for 2 goods vehicles & 2 trailers.

Owners or occupiers of land (including buildings) near the operating centre who believe that their use or enjoyment of that land would be affected, should make written representations to the Traffic Commissioner at Hillcrest House, 386 Harehills Lane, Leeds, LS9 6NF, stating their reasons, within 21 days of this notice. Representors must at the same time send a copy of their representations to the applicant(s) at the top of this notice. A Guide to Making Representations is available from the Traffic Commissioner's office.

General Announcements

HULL FC LUCKY

13 LOTTERY DRAW

Week ending 25/10/2019

£500 winner - F6118
 £50 winners - G4145, H1463,
 B6824, K8679, D8278

JACKPOT NUMBER - H6406

WEEK ENDING 01/11/2019

£500 winner - R1214
 £50 winners - E4022, K7642,
 E8516, K9689, J5034

Draws take place every Friday

For a full list of prize winners

visit our lottery page on
<http://www.hullfc.com>

It's time to
 think about
 booking online

marketplacelive.co.uk
 Your local place to buy and sell



Self-Serve your advert
 in a **flash** online

marketplacelive.co.uk Your local place to buy and sell

Adult Services 18+

Adult Massage

***** **CURVY KATE****** THICK set and curvy 07496161099

♦♦**ALEC**** DISCREET Services for Ladies or Gents. Mature Male. Call 07495693460

♦♦**CHRISSY'S ANGELS** Special Offer - www.chrissysangels.co.uk 01482 345726

♦♦**DISCRETION.UK** ♦♦**STAFF** Req Tel. 01482 216820

♦♦**GENTRY HULLS ONLY MALE SPA** Open 7 days Gentryhull. com 07904050679

♦♦**SEDUCTIONS** ♦♦**MASSAGE** Parlour Staff red'd 01482 355105



Any item
 any price
 free online

marketplacelive.co.uk
 Your local place to buy and sell



Self-Serve online
 Any item any price free online

marketplacelive.co.uk Your local place to buy and sell

Public Notices

Public Notices

South Humber Bank Energy Centre Project
The Planning Act 2008 - Section 48
The Infrastructure Planning (Applications: Prescribed Forms and Procedure) Regulations 2009 - Regulation 4
The Infrastructure Planning (Environmental Impact Assessment) Regulations 2017 - Regulation 13
NOTICE OF PROPOSED APPLICATION FOR A DEVELOPMENT CONSENT ORDER FOR THE SOUTH HUMBER BANK ENERGY CENTRE PROJECT

1. Notice is hereby given that EP Waste Management Ltd (EPWM), a subsidiary of EP UK Investments Limited, whose registered office is Part Ground Floor, Paradigm Building 3175 Century Way, Thorpe Park, Leeds LS15 8ZB, intends to submit an application (the 'Proposed Application') to the Secretary of State for Business, Energy and Industrial Strategy for a Development Consent Order ('DCO') under Section 37 of the Planning Act 2008 (the '2008 Act') to authorise the construction, operation and maintenance of a new energy from waste ('EFW') power station with a capacity of up to 95 megawatts ('MW') gross output and associated development (together the 'Project').

The Project

2. The site for the Project (the 'Site') would be located primarily on land within the boundary of the South Humber Bank Power Station Site, South Marsh Road, Near Stallingborough, DN41 8BZ, at grid reference TA 523000 413309. The Site extends to approximately 25 hectares.

3. The proposed DCO would, amongst other matters, authorise the construction, operation and maintenance of:

3.1 an EFW power station, comprising fuel reception and storage facilities, consisting of vehicle ramps, a tipping hall, shredder, fuel storage bunker and crane; a combustion system housed within a boiler hall, consisting of two combustion lines and associated boilers; a steam turbine and generator housed within a turbine hall; a bottom ash handling system, including ash storage; a flue gas treatment system, including residue and reagent silos; emissions stacks and associated emissions monitoring systems; a cooling system comprising fin fan coolers; an air-cooled condenser; a compressed air system; an ammonia tank; a process effluent storage tank; a demineralised water treatment plant and demineralised water storage tanks; an electrical switchyard, including transformers; auxiliary diesel generators and diesel storage tanks; pipe racks, pipe runs and cabling; administration block, including control room, workshop and stores; fire water pump house and fire water tank; vehicle access road from South Marsh Road; internal vehicle access roads, crossings and pedestrian and cycle facilities and routes; security gatehouse, barriers and enclosures; weighbridges; car parking; heavy goods vehicle holding area and driver welfare block; and a surface water attenuation pond;

3.2 a connection to the electricity grid network;

3.3 a connection to the gas grid network;

3.4 other associated development, including external lighting; fencing and boundary treatment; security measures; surface and foul water drainage systems; water, electricity, gas and other utilities connections; hard and soft landscaping; biodiversity mitigation and enhancement measures; temporary contractor facilities and construction laydown areas; vehicle access roads, crossings, parking and pedestrian and cycle facilities and routes.

Environmental Impact Assessment

4. The Applicant has notified the Secretary of State in writing under Regulation 8(1)(b) of The Infrastructure Planning (Environmental Impact Assessment) Regulations 2017 (as amended) (the 'EIA Regulations') that it intends to provide an Environmental Statement ('ES') in respect of the Project. The Project is therefore 'EIA development' for the purposes of the EIA Regulations and an ES will form part of the Proposed Application.

5. Information so far compiled about the Project's environmental impacts is contained in a Preliminary Environmental Information Report ('PEIR') and summarised in a Non-technical Summary. The PEIR and other documents relating to the Project, including plans and maps showing the nature and location of the Project (the 'Consultation Documents'), are available to view or download free of charge from the Project website: <https://www.shbenergycentre.co.uk/> and for inspection free of charge from 31 October to 13 December 2019 at the following locations during the hours set out (opening hours may be subject to change):

Locations	Opening Times
Immingham Library , Pelham Rd, Immingham, DN40 1DF	Mon, Tues, Thurs & Fri: 8.30am to 5.30pm Wed & Sun: Closed Sat: 9am to 1pm
Europarc Innovation Centre , Innovation Way, Europarc, Grimsby DN37 9TT	Mon, Tues, Wed, Thurs & Fri: 8.30am to 4.30pm Sat & Sun: Closed
North East Lincolnshire Council , ENGIE, New Oxford House, George Street, Grimsby, DN31 1HB	Mon, Tues, Wed, Thurs, Fri: 8.30am to 4.30pm Sat & Sun: Closed

6. A hard copy of the Consultation Documents is available on request for a maximum copying charge of £150.00. Hard copies of individual documents are also available on request. An electronic copy of the Consultation Documents (USB or CD) is available on request for a charge of £15.00. The documents can be obtained by writing to: SHBEC Consultation, c/o DWD, 6 New Bridge Street, London, EC4V 6AB or emailing consultation@shbenergycentre.co.uk.

7. If you wish to respond to this notice, or make representations in respect of the Project, these should be sent to the Applicant. Please include your name and an address where any correspondence relating to the Project can be sent. Representations may be submitted in the following ways:

Post: SHBEC Consultation, c/o DWD, 6 New Bridge Street, London, EC4V 6AB
Email: consultation@shbenergycentre.co.uk
Website: via an online survey form on the Project website: <https://www.shbenergycentre.co.uk/>

8. Any comments received will be analysed by the Applicant and any appointed agent of the Applicant, and copies may be made available in due course to the Secretary of State, the Planning Inspectorate and other relevant statutory authorities so that your comments can be noted. We will request that your personal details are not placed on public record and these will be held securely by the Applicant in accordance with the Data Protection Act 1998 and the General Data Protection Regulation and used solely in connection with the consultation process and subsequent DCO application and, except as noted above, will not be passed to third parties.

9. Please note that all responses must be received by the Applicant no later than 11:59pm on 13 December 2019.

10. If you would like any further information in respect of this notice or the Project, please contact the Project team using one of the contact methods described above.

EP Waste Management Ltd

highways england

ROAD TRAFFIC REGULATION ACT 1984 - SECTION 14 THE A63 TRUNK ROAD (SOUTH CAVE INTERCHANGE TO DALTRY INTERCHANGE) (TEMPORARY PROHIBITION OF TRAFFIC)

NOTICE IS HEREBY GIVEN that Highways England Company Limited intends to make an Order on the A63 Trunk Road, in the District of Hull and the East Riding of Yorkshire to enable bridge and structure surveys, carriageway repair and reconstruction, road marking, stud renewal, white lining, electrical, cyclic and routine maintenance works to be carried out in safety.

The works are expected to start on Monday 25 November 2019 for 7 weeks, or until completed, and will take place between 8pm and 6am.

The effect of the Order will be to close, at times during the works, the A63:

- (i) eastbound and westbound entry and exit slip roads at South Cave Interchange;
- (ii) eastbound and westbound entry and exit slip roads at Welton Road Interchange;
- (iii) eastbound and westbound entry and exit slip roads at Melton Interchange;
- (iv) eastbound and westbound entry and exit slip roads at Western Interchange;
- (v) eastbound and westbound entry and exit slip roads at Priory Way Interchange;
- (vi) eastbound and westbound entry and exit slip roads at Brighton Street Interchange; and
- (vii) eastbound and westbound entry and exit slip roads at Daltry Street Interchange.

During which times suitably signed alternative routes will be available at all times.

Traffic signs will indicate the extent of the prohibitions (which will not apply to emergency service vehicles or vehicles being used for winter maintenance or vehicles being used for traffic officer purposes). The Order comes into force on 24 November 2019 and has a maximum duration of eighteen months.

The contact for any further information about this notice is Adam Hughes, telephone: 0300 470 4554, e-mail: Adam.Hughes@highwaysengland.co.uk

RICHARD FOXTON, Highways England, 3 South, Lateral, 8 City Walk, LEEDS, LS11 9AT.

THE EAST RIDING OF YORKSHIRE COUNCIL ROAD TRAFFIC REGULATION ACT 1984 SECTION 14(1) - TEMPORARY PROHIBITION OF THROUGH TRAFFIC A1079 (PART)

Notice is hereby given that East Riding of Yorkshire Council intends not less than seven days from the date of this notice to make an Order, the effect of which will be to prohibit any vehicle from proceeding along the A1079 (entry slips onto the A1079 from the A164) commencing 21.00 hours Monday 18 November 2019 until 05.00 hours Tuesday 19 November 2019 to enable defectograph works on the slips roads. **(Both of the slips will be closed the same night but not at the same time).** The road closure is necessary to enable the works to be carried out in a manner consistent with ensuring the safety of the public. The Order is valid for 18 months, but it is anticipated that the works will be completed within the times stated.

The alternative route for traffic affected by the closure will be via the remainder of the A1079.

Access will be maintained for Emergency Services only. Further information can be obtained from Streetscene Services, Highways, tel (01482) 393939. Ref:JS.

Dated 31 October 2019

Paul Bellotti • Director of Communities & Environment
 County Hall, Beverley, East Riding of Yorkshire, HU17 9BA

KINGSTON UPON HULL CITY COUNCIL THE KINGSTON UPON HULL ENNERDALE, PAXDALE, THORNDALE AND WATERDALE (PROHIBITION OF WAITING) ORDER 2019

Notice is hereby given that the Kingston upon Hull City Council on the 30th October 2019 made the above Order under the Road Traffic Regulation Act 1984. The Order will come into operation on the 4th November 2019.

The effect of the Order is to introduce no waiting at any time parking restrictions (double yellow lines) at the junctions of Paxdale, Thorndale, and Waterdale with Ennerdale. Double yellow lines are also proposed on Ennerdale to ensure that the pedestrian crossing point adjacent to the entrance to Bude Park is not obscured by parked vehicles.

The purpose of the Order is to alleviate the current situation where parked vehicles are obscuring driver sightlines.

A copy of the Order and relevant map may be examined during normal office hours at the Reception and Enquiries Office, The Guildhall, The Kingston upon Hull, reference JGO/39800-1394.

If you wish to question the validity of this Order or any provisions contained in it on the grounds that it is not within the powers conferred by the Road Traffic Regulation Act 1984, as amended, or on the grounds that any requirement of that Act or of any instrument made under it has not been complied with in relation to the Order, you may, within six weeks from the 30th October 2019, apply to the High Court for this purpose.

Dated the 31st October 2019

Ian Anderson
 Director of Legal Services and Partnerships

THE EAST RIDING OF YORKSHIRE COUNCIL (PART OF LADYGATE, BEVERLEY) (TEMPORARY PROHIBITION OF THROUGH TRAFFIC) ORDER 2019

East Riding of Yorkshire Council has made an Order the effect of which is to prohibit any person from causing any vehicle to proceed along Ladygate, Beverley between Saturday Market and Sow Hill Road.

The reason for the closure is to enable the laying of a new gas main and three new services to be carried out and completed in a manner consistent with ensuring the safety of the public.

It is anticipated that the works will be completed between:

08.00 hours on Monday 4 November 2019 and 18.00 hours on Friday 8 November 2019

The road will be open at all times to pedestrians, for resident's access and for emergency services.

The alternative route for traffic affected by the Order is via Saturday Market, North Bar Within, Hengate, Sow Hill Road and vice versa.

The East Riding of Yorkshire Council (On Street Parking Places) (Civil Enforcement) (Civil Enforcement) Order 2017 is hereby suspended for the areas listed for the duration of this Order. The Order will commence 4 November 2019 and continue in force for a period not exceeding 18 months or until the works which it is proposed to carry out have been completed, whichever is the earlier.

Further information can be obtained from Streetscene Services, Highways Customer Care, tel (01482) 393939. Ref:JS.

Dated 31 October 2019

Mathew Buckley • Solicitor • Head of Legal & Democratic Services
 East Riding of Yorkshire Council
 East Riding of Yorkshire Council will, on request, provide this document in Braille, audio or large print format.

If English is not your first language and you would like a translation of this document, please telephone (01482) 393939.

Adult Services 18+

Adult Massage

VERY BUSTY INDEPENDENT ELLIE
GOOD GIRLS GO TO HEAVEN, BAD GIRLS TAKE YOU THERE
07516 383344
www.adultwork.com/tel123456

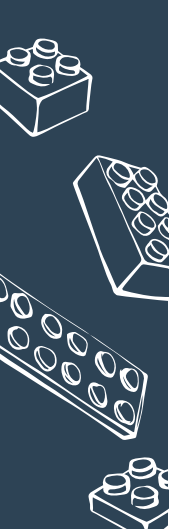
*** * * * * C U R V Y**
KATE** THICK set and curvy 07496161099**

****ALEC** DISCREET**
 Services for Ladies or Gents. Mature Male. Call 07495693460

CHRISSEY'S ANGELS
 Special Offer - www.chrissyangels.co.uk 01482 345726

DISCRETION.UK
 STAFF Req Tel. 01482 216820

SEDUCTIONS
 MASSAGE Parlour
 Staff red'd 01482 355105



The best place to **sell** your brick-a-brack

marketplacelive.co.uk
 Your local place to **buy** and **sell**

highways england

ROAD TRAFFIC REGULATION ACT 1984 - SECTION 14 THE A63 TRUNK ROAD (WELTON) (TEMPORARY 50 MILES PER HOUR SPEED RESTRICTION)

NOTICE IS HEREBY GIVEN that Highways England Company Limited has made an Order on the A63 Trunk Road, in the East Riding of Yorkshire, to enable drainage renewal works to be carried out in safety.

The works are expected to start at 8pm on Monday 4 November 2019 for 10 nights, or until completed, and will take place between 8pm and 6am.

The effect of the Order will be to impose, a temporary 50mph speed restriction on the A63:

- (i) eastbound carriageway from 28 metres east of the entry slip road at Welton Road Interchange eastwards for a distance of 1617 metres; and
- (ii) westbound carriageway from 520 metres east of Swanland Hill overbridge westwards for a distance of 2965 metres.

Traffic signs will indicate the extent of the restrictions (which will not apply to emergency service vehicles or special forces vehicles). The Order comes into force on 3 November 2019 and has a maximum duration of eighteen months.

The contact for any further information about this notice is Adam Hughes, telephone: 0300 470 4554, e-mail: Adam.Hughes@highwaysengland.co.uk

RICHARD FOXTON, Highways England, 3 South, Lateral, 8 City Walk, LEEDS, LS11 9AT.

marketplacelive.co.uk
 Your local place to **buy** and **sell**

People are more likely to see your advert with a **photo**

Public Notices

Public Notices

NORTH LINCOLNSHIRE COUNCIL - MEMBERS' ALLOWANCES

IN ACCORDANCE WITH Regulation 15 of the Local Authorities (Members' Allowances) (England) Regulations 2003, the following sums were paid to members in respect of basic allowance, leadership, special responsibility, other special responsibility allowance, travel allowance leadership and other, co-optees allowance, substitutions and overnight accommodation for North Lincolnshire Council 2018/19.

		Basic Allowance	Leadership Special Responsibility	Other Special Responsibility	Travel Allowance Leadership	Travel Allowance Ward & Other	Co-optees Allowances & Substitutions	Overnight Accommodation & Other	Total
M	Alli	6873.96					235.00		7108.96
R	Alcock	6873.96		5209.92		1154.90	94.00	16.80	13349.58
M	Armiger	6873.96		5209.92			141.00		12224.88
S	Armitage	6873.96				950.40	94.00		7918.36
S	Bainbridge	6873.96					47.00		6920.96
J	S Briggs	6873.96		11022.41		1024.65			18921.02
P	Clark	6873.96		5837.48		1758.15			14469.59
M	J Collinson	6873.96		4212.96		394.30	188.00		11669.22
A	Davison	6873.96		5815.92		134.35	94.00		12918.23
J	R Davison	6873.96	10161.96						17348.92
A	Ellerby	6873.96				1871.10	141.00		8886.06
W	J England	6873.96		5209.92			47.00		12130.88
J	Evison	6873.96		6477.25		1707.45	47.00	23.80	15129.46
L	K Foster	6873.96		8400.00		487.40	94.00		15855.36
T	Foster	6873.96		8637.00		342.30	47.00		15900.26
I	Glover	6873.96		5312.04		519.05	141.00		12846.05
S	R Godfrey	6873.96					94.00		6967.96
A	K Gosling	6873.96		4212.96					11086.92
M	R Grant	6873.96				492.90			7366.86
R	Hannigan	6873.96	11127.00		1624.35	675.90	47.00		20348.21
H	N Kataria	6873.96							6873.96
M	A Kirk	6873.96					141.00		7014.96
D	J Longcake	6873.96		4956.96			141.00		11971.92
E	Marper	6873.96	10161.96		415.80	372.15			17823.87
H	Mumby-Croft	6873.96		8637.00		739.35	470.00		16720.31
C	O' Sullivan	6873.96		4465.92		135.00	94.00		11568.88
R	Ogg	6873.96	8468.30	1275.01		841.85	141.00		17600.12
D	J Oldfield	6873.96		252.96		581.85	188.00		7896.77
B	Perry	6873.96					0.00		6873.96
N	Pool	6873.96	10161.96	252.96			94.00		17382.88
E	M Redfern	6873.96		5096.70	46.80	520.20			12537.66
J	D Reed	6873.96	10161.96		499.50	1032.30			18567.72
D	R Robinson	6873.96		8637.00		556.65			16067.61
D	J Rose	6873.96	10161.96			1797.30	9.60		18842.82
H	E Rowson	6873.96		4989.60					11863.56
C	Sherwood	6873.96	2327.35	6520.32		500.40	47.00		16269.03
N	J Sherwood	6873.96		9146.04					16020.00
S	J Swift	6873.96				482.85			7356.81
J	P Vickers	6873.96		4956.96			94.00		11924.92
K	Vickers	6873.96		8130.00		651.30			15655.26
R	Waltham	6873.96	16799.04		4384.20			190.25	28247.45
D	R Wells	6873.96		5209.92		2152.80	47.00		14283.68
S	Wilson	6873.96		252.96			47.00		7173.92
		295,580.28	89,531.49	148,338.09	8,767.95	20,402.15	3,955.00	230.85	565,905.81

This notice contains details of allowances and expenses claimed by council members and co-optees to council bodies. These expenses are claimed in respect of a range of duties. All council members carry out duties arising from representing their Wards. In addition Cabinet Members carry out wider Leadership roles in the council area, the local region and nationally.

Dated this 7th day of November 2019

B McIntyre

Director, Governance & Partnerships

Church Square House, 30-40 High Street, Scunthorpe, North Lincolnshire, DN15 6NL.

WASTE & PUBLIC PROTECTION

LICENSING ACT 2003

APPLICATION FOR THE VARIATION OF A PREMISES LICENCE

PREScribed FORM OF NOTICE

Take notice that the undersigned have made an application to the North Lincolnshire Council for a variation of a premises licence in respect of the premises known as:

(Name of Premises) SCUNTHORPE UNITED FC
Sited at (address) GLANFORD PARK, JACK BROWNSWORD WAY, SCUNTHORPE, DN15 8TD

For the said premises to be used for the purpose(s) of:
15 PROPOSED VARIATION TO PREMISES LICENCE STAND NAME CHANGES, MAIN VARIATION IS THE SALE OF ALCOHOL IN GLASS IN IRON BAR

Interested parties can make representations in writing to:
Waste & Public Protection, Licensing Division, P O Box 42, Church Square House, Scunthorpe, North Lincolnshire DN15 6XQ no more than 28 days starting on the day on which the application was given to North Lincolnshire Council's Licensing Division 18/10/19 stating the grounds of objection.

For guidance the Licensing Policy can be found on the North Lincolnshire website www.northlincs.gov.uk

(The variation application setting out the full details can be viewed at Church Square House by appointment only)

Dated: 29/10/2019

It is an offence knowingly or recklessly to make a false statement in connection with an application and the maximum fine for which a person is liable on summary conviction for the offence is £5000.

NORTH LINCOLNSHIRE COUNCIL

(A18 Crowle-A161 Althorpe)

(Temporary 40mph Speed Limit) Order 2019

Notice is hereby given that North Lincolnshire Council has made an Order the effect of which is to impose a temporary 40mph speed limit on that length of the A18 Crowle-A161 Althorpe 6am 11th-10pm 13th Nov 2019 inclusive (but varied to take account of any unforeseen circumstances) while Northern Grid carries out high voltage works.

Dated this 7th day of November 2019

W S Bell - Head of Legal & Democracy

Church Square House

30-40 High Street, Scunthorpe

NORTH LINCOLNSHIRE COUNCIL

(Temporary Closure of Public Footpath 30,

Brigg & Scawby) Order 2019

Notice is hereby given that North Lincolnshire Council has made an Order the effect of which is to prohibit any pedestrian from proceeding along that length of Public Footpath 30 from Pool End, Scawby, where the old and new Rivers Ancholme converge at Grid Ref SE9948305722, north along the eastern bank of the River Ancholme New Cut to the A18 Bridge St, Brigg at Grid Ref SE9944606110, a distance of approx 1,270 metres. The closure is required to facilitate safety improvements to the railway line. It is effective from 4th Nov 2019-5th Feb 2020 inclusive (but varied to take account of any unforeseen circumstances). No suitable diversion is available.

Dated this 7th day of November 2019

Church Square House W S Bell - Head of Legal & Democracy

30-40 High Street, Scunthorpe

NORTH LINCOLNSHIRE COUNCIL

Notice of Suspension of Use of Parking Bays

Notice is hereby given that, due to unforeseen circumstances during the refurbishment of The Blue Bell Inn, the use of 10 parking bays in the Dayne Avenue Car Park, Scunthorpe will be suspended for a further period, from 17th Nov up to and including 29th Nov 2019.

Dated this 7th day of November 2019

30-40 High Street

W S Bell

Head of Legal & Democracy

Church Square House, Scunthorpe

NORTH LINCOLNSHIRE COUNCIL

Temporary Prohibition of Through Traffic

Howe Lane - Goxhill Level Crossing

North Lincolnshire Council hereby gives notice that no person shall cause any vehicle to proceed over Goxhill Level Crossing 11pm 20th-5.25am 21st Nov 2019. The closure is required for an annual barrier test. The diversion is Howe Lane, Chapel St, North End, Ferry Rd.

Dated this 7th day of November 2019

W S Bell - Head of Legal & Democracy

Church Square House

30-40 High Street, Scunthorpe

South Humber Bank Energy Centre Project

The Planning Act 2008 - Section 48

The Infrastructure Planning (Applications: Prescribed Forms and Procedure)

Regulations 2009 - Regulation 4

The Infrastructure Planning (Environmental Impact Assessment)

Regulations 2017 - Regulation 13

NOTICE OF PROPOSED APPLICATION FOR A DEVELOPMENT CONSENT ORDER

FOR THE SOUTH HUMBER BANK ENERGY CENTRE PROJECT

1. Notice is hereby given that EP Waste Management Ltd ('EPWM'), a subsidiary of EP UK Investments Limited, whose registered office is Part Ground Floor, Paradigm Building 3175 Century Way, Thorpe Park, Leeds LS15 8ZB, intends to submit an application ('the Proposed Application') to the Secretary of State for Business, Energy and Industrial Strategy for a Development Consent Order ('DCO') under Section 37 of the Planning Act 2008 (the '2008 Act') to authorise the construction, operation and maintenance of a new energy from waste ('EFW') power station with a capacity of up to 95 megawatts ('MW') gross output and associated development (together 'the Project').

The Project

2. The site for the Project (the 'Site') would be located primarily on land within the boundary of the South Humber Bank Power Station Site, South Marsh Road, Near Stallingborough, DN41 8BZ, at grid reference TA 523000 413309. The Site extends to approximately 25 hectares.

3. The proposed DCO would, amongst other matters, authorise the construction, operation and maintenance of:

3.1 an EFW power station, comprising fuel reception and storage facilities, consisting of vehicle ramps, a tipping hall, shredder, fuel storage bunker and crane; a combustion system housed within a boiler hall, consisting of two combustion lines and associated boilers; a steam turbine and generator housed within a turbine hall; a bottom ash handling system, including ash storage; a flue gas treatment system, including residue and reagent silos; emissions stacks and associated emissions monitoring systems; a cooling system comprising fin fan coolers; an air-cooled condenser; a compressed air system; an ammonia tank; a process effluent storage tank; a demineralised water treatment plant and demineralised water storage tanks; an electrical switchyard, including transformers; auxiliary diesel generators and diesel storage tanks; pipe racks, pipe runs and cabling; administration block, including control room, workshop and stores; fire water pump house and fire water tank; vehicle access road from South Marsh Road; internal vehicle access roads, crossings and pedestrian and cycle facilities and routes; security gatehouse, barriers and enclosures; weighbridges; car parking; heavy goods vehicle holding area and driver welfare block; and a surface water attenuation pond;

3.2 a connection to the electricity grid network;

3.3 a connection to the gas grid network; and
3.4 other associated development, including external lighting; fencing and boundary treatment; security measures; surface and foul water drainage systems; water, electricity, gas and other utilities connections; hard and soft landscaping; biodiversity mitigation and enhancement measures; temporary contractor facilities and construction laydown areas; vehicle access roads, crossings, parking and pedestrian and cycle facilities and routes.

Environmental Impact Assessment

4. The Applicant has notified the Secretary of State in writing under Regulation 8(1)(b) of The Infrastructure Planning (Environmental Impact Assessment) Regulations 2017 (as amended) (the 'EIA Regulations') that it intends to provide an Environmental Statement ('ES') in respect of the Project. The Project is therefore 'EIA development'.

for the purposes of the EIA Regulations and an ES will form part of the Proposed Application.

5. Information so far compiled about the Project's environmental impacts is contained in a Preliminary Environmental Information Report ('PEIR') and summarised in a Non-technical Summary. The PEIR and other documents relating to the Project, including plans and maps showing the nature and location of the Project (the Consultation Documents), are available to view or download free of charge from the Project website: <https://www.shbenergycentre.co.uk/> and for inspection free of charge from 31 October to 13 December 2019 at the following locations during the hours set out (opening hours may be subject to change):

Locations	Opening Times
Immingham Library , Pelham Rd, Immingham, DN40 1DF	Mon, Tues, Thurs & Fri: 8.30am to 5.30pm Wed & Sun: Closed Sat: 9am to 1pm
Europarc Innovation Centre, Innovation Way, Europarc, Grimsby DN37 9TT	Mon, Tues, Wed, Thurs & Fri: 8.30am to 4.30pm Sat & Sun: Closed
North East Lincolnshire Council, ENGIE, New Oxford House, George Street, Grimsby, DN31 1HB	Mon, Tues, Wed, Thurs, Fri: 8.30am to 4.30pm Sat & Sun: Closed

6. A hard copy of the Consultation Documents is available on request for a maximum copying charge of £150.00. Hard copies of individual documents are also available on request. An electronic copy of the Consultation Documents (USB or CD) is available on request for a charge of £15.00. The documents can be obtained by writing to: SHBEC Consultation, c/o DWD, 6 New Bridge Street, London, EC4V 6AB or emailing consultation@shbenergycentre.co.uk.

7. If you wish to respond to this notice, or make representations in respect of the Project, these should be sent to the Applicant. Please include your name and an address where any correspondence relating to the Project can be sent. Representations may be submitted in the following ways:

Post: SHBEC Consultation, c/o DWD,

6 New Bridge Street, London, EC4V 6AB

Email: consultation@shbenergycentre.co.uk

Website: via an online survey form on the Project

website: <https://www.shbenergycentre.co.uk/>

8. Any comments received will be analysed by the Applicant and any appointed agent of the Applicant, and copies may be made available in due course to the Secretary of State, the Planning Inspectorate and other relevant statutory authorities so that your comments can be noted. We will request that your personal details are not placed on public record and these will be held securely by the Applicant in accordance with the Data Protection Act 1998 and the General Data Protection Regulation and used solely in connection with the consultation process and subsequent DCO application and, except as noted above, will not be passed to third parties.

9. Please note that all responses must be received by the Applicant no later than 11:59pm on 13 December 2019.

10. If you would like any further information in respect of this notice or the Project, please contact the Project team using one of the contact methods described above.

EP Waste Management Ltd

NORTH LINCOLNSHIRE COUNCIL

Town and Country Planning

(Development Management Procedure)

(England) Order 2015 -

Notice under Article 15

Planning (Listed Buildings and

Conservation Area) Regulations &

Act 1990

Town and Country Planning Act 1990

Notice is hereby given that the Council has received the following applications which either affect a listed building, conservation area, is a major development or represents a departure from the Local Plan. Details are available at the Civic Centre, Ashby Road, Scunthorpe DN16 1AB or at www.northlincs.gov.uk/planning. Comments should be made within 21 days of this notice, preferably online or by email at planning@northlincs.gov.uk.

BARTON: PA/2019/1438

Re-advertisement of demolition of engineering workshop & erect 7

townhouses & new access, Holykyle

HAXEY: PA/2019/1541

Dwelling, 31 Haxey Lane

REDBOURNE: PA/2019/1507

Replace roof, Shiverscroft, Vicarage Lane

THORNTON CURTIS: PA/2019/1726

Dwelling, land adjacent The Old

Vicarage, 26 Main Street

APPLEBY: PA/2019/1810

Dwelling, 8 School Lane

BARTON: PA/2019/1814

Replace windows, New Tree House,

13 Holykyle

SCUNTHORPE: PA/2019/1821

Apartment block 50-72, Bellingham Road,

EPWORTH: PA/2019/1828

Reserved matters approval 5 dwellings,

Beltan Garden Centre, Sandtoft Road

BARTON: PA/2019/1845 &

PA/2019/1846

Planning & listed consent to convert

building to dwelling if you do write or

email us, please bear in mind that

anyone may read your letter and a

copy will appear on the council's web

site (personal details will be removed

before being uploaded). In the event of

any appeal, representations will be

forwarded to the Department for

Communities and Local Government

and the applicant unless a contrary

will is clearly expressed.

Development Management

Public Notices

Public Notices

South Humber Bank Energy Centre Project
The Planning Act 2008 - Section 46
The Infrastructure Planning (Applications: Prescribed Forms and Procedure) Regulations 2009 - Regulation 4
The Infrastructure Planning (Environmental Impact Assessment) Regulations 2017 - Regulation 13
NOTICE OF PROPOSED APPLICATION FOR A DEVELOPMENT CONSENT ORDER FOR THE SOUTH HUMBER BANK ENERGY CENTRE PROJECT

1. Notice is hereby given that EP Waste Management Ltd ('EPWM'), a subsidiary of EP UK Investments Limited, whose registered office is Part Ground Floor, Paradigm Building 3175 Century Way, Thorpe Park, Leeds LS15 8ZB, intends to submit an application ('the Proposed Application') to the Secretary of State for Business, Energy and Industrial Strategy for a Development Consent Order ('DCO') under Section 37 of the Planning Act 2008 (the '2008 Act') to authorise the construction, operation and maintenance of a new energy from waste ('EFW') power station with a capacity of up to 95 megawatts ('MW') gross output and associated development (together 'the Project').

The Project

2. The site for the Project (the 'Site') would be located primarily on land within the boundary of the South Humber Bank Power Station Site, South Marsh Road, Near Stallingborough, DN41 8BZ, at grid reference TA 523000 413309. The Site extends to approximately 25 hectares.

3. The proposed DCO would, amongst other matters, authorise the construction, operation and maintenance of:

3.1 an EFW power station, comprising fuel reception and storage facilities, consisting of vehicle ramps, a tipping hall, shredder, fuel storage bunker and crane; a combustion system housed within a boiler hall, consisting of two combustion lines and associated boilers; a steam turbine and generator housed within a turbine hall; a bottom ash handling system, including ash storage; a flue gas treatment system, including residue and reagent silos; emissions stacks and associated emissions monitoring systems; a cooling system comprising fin fan coolers; an air-cooled condenser; a compressed air system; an ammonia tank; a process effluent storage tank; a demineralised water treatment plant and demineralised water storage tanks; an electrical switchyard, including transformers; auxiliary diesel generators and diesel storage tanks; pipe racks, pipe runs and cabling; administration block, including control room, workshop and stores; fire water pump house and fire water tank; vehicle access road from South Marsh Road; internal vehicle access roads, crossings and pedestrian and cycle facilities and routes; security gatehouse, barriers and enclosures; weighbridges; car parking; heavy goods vehicle holding area and driver welfare block; and a surface water attenuation pond;

3.2 a connection to the electricity grid network;

3.3 a connection to the gas grid network; and

3.4 other associated development, including external lighting; fencing and boundary treatment; security measures; surface and foul water drainage systems; water, electricity, gas and other utilities connections; hard and soft landscaping; biodiversity mitigation and enhancement measures; protection contractor facilities and construction laydown areas; vehicle access roads, crossings, parking and pedestrian and cycle facilities and routes.

Environmental Impact Assessment

4. The Applicant has notified the Secretary of State in writing under Regulation 8(1)(b) of the Infrastructure Planning (Environmental Impact Assessment) Regulations 2017 (as amended) ('the EIA Regulations') that it intends to provide an Environmental Statement ('ES') in respect of the Project. The Project is therefore 'EIA development' for the purposes of the EIA Regulations and an ES will form part of the Proposed Application.

5. Information so far compiled about the Project's environmental impacts is contained in a Preliminary Environmental Information Report ('PEIR') and summarised in a Non-technical Summary. The PEIR and other documents relating to the Project, including plans and maps showing the nature and location of the Project ('the Consultation Documents'), are available to view or download free of charge from the Project website: <https://www.shbenergycentre.co.uk/> and for inspection free of charge from 31 October to 13 December 2019 at the following locations during the hours set out (opening hours may be subject to change):

Locations	Opening Times
Immingham Library, Pelham Rd, Immingham, DN40 1GF	Mon, Tues, Thurs & Fri: 8.30am to 5.30pm Wed & Sun: Closed Sat: 9am to 1pm
Europarc Innovation Centre, Innovation Way, Europarc, Grimsby DN37 9TT	Mon, Tues, Wed, Thurs & Fri: 8.30am to 4.30pm Sat & Sun: Closed
North East Lincolnshire Council, ENGE, New Oxford House, George Street, Grimsby, DN31 1HB	Mon, Tues, Wed, Thurs, Fri: 8.30am to 4.30pm Sat & Sun: Closed

6. A hard copy of the Consultation Documents is available on request for a maximum copying charge of £150.00. Hard copies of individual documents are also available on request. An electronic copy of the Consultation Documents (USB or CD) is available on request for a charge of £15.00. The documents can be obtained by writing to: SHBEC Consultation, c/o DWD, 6 New Bridge Street, London, EC4V 6AB or emailing consultation@shbenergycentre.co.uk.

7. If you wish to respond to this notice, or make representations in respect of the Project, these should be sent to the Applicant. Please include your name and an address where any correspondence relating to the Project can be sent. Representations may be submitted in the following ways:

Post: SHBEC Consultation, c/o DWD, 6 New Bridge Street, London, EC4V 6AB

Email: consultation@shbenergycentre.co.uk

Website: via an online survey form on the Project website: <https://www.shbenergycentre.co.uk/>

8. Any comments received will be analysed by the Applicant and any appointed agent of the Applicant, and copies may be made available in due course to the Secretary of State, the Planning Inspectorate and other relevant statutory authorities so that your comments can be noted. We will request that your personal details are not placed on public record and these will be held securely by the Applicant in accordance with the Data Protection Act 1998 and the General Data Protection Regulation and used solely in connection with the consultation process and subsequent DCO application and, except as noted above, will not be passed to third parties.

9. Please note that all responses must be received by the Applicant no later than 11:59pm on 13 December 2019.

10. If you would like any further information in respect of this notice or the Project, please contact the Project team using one of the contact methods described above.

EP Waste Management Ltd

highways england

ROAD TRAFFIC REGULATION ACT 1984 - SECTION 14
THE A160 TRUNK ROAD
(HABROUGH ROUNDABOUT TO MANBY ROAD ROUNDABOUT)
(TEMPORARY RESTRICTION AND PROHIBITION OF TRAFFIC)

NOTICE IS HEREBY GIVEN that Highways England Company Limited has made an Order on the A160 Trunk Road, in the County of North Lincolnshire, to enable carriageway resurfacing, white lining, stud renewal, iron work resetting and cyclic routine maintenance works to be carried out in safety.

The works are expected to start at 8pm on Monday 4 November 2019 for 5 weeks, or until completed.

The effect of the Order will be, between 8pm and 6am, at times during the works, to:

- close the A160 eastbound and westbound carriageways from Habrough Roundabout to Manby Road Roundabout, a distance of 2600 metres;
- close the gap in the A160 central reservation adjacent to Eastfield Road junction;
- close the gap in the A160 central reservation approximately 790 metres east of the centreline of Eastfield Road junction;
- Ban vehicles from entering or leaving the A160 at its junction with Town street and Eastfield Road.

During the closures suitably signed alternative routes will be available.

It will be necessary to impose, at times during the works, a temporary 50mph, 30mph and at times a 10mph, speed restriction on the:

- carriageway mentioned in (i);
- the circulatory carriageways of the A160 Habrough Roundabout and the A160 Manby Road Roundabout.

It will also be necessary, for 24 hours a day, at times during the works, to close the layby situated adjacent to the:

- A160 eastbound carriageway 10 metres east of the centreline of its junction with Town Street.
- A180 eastbound carriageway 130 metres east of the centre point of the B1211 Croxton underbridge.
- A180 eastbound carriageway 960 metres west of the centre point of the B1211 Ucleby underbridge;
- A180 eastbound carriageway 500 metres east of the centre point of the B1211 Ucleby underbridge;
- A180 westbound carriageway 370 metres east of the centre point of Meadows Occupation overbridge;
- A180 westbound carriageway 270 metres east of the centre point of Marsh Road overbridge;
- A180 westbound carriageway 470 metres west of the centre point of Marsh Road overbridge.

Traffic management will be in force 24 hours a day and traffic signs will indicate the extent of the restrictions (which will not apply to emergency service vehicles or special forces vehicles) and prohibitions (which will not apply to emergency service vehicles or vehicles being used in connection with the said works or for winter maintenance or traffic officer purposes). Access will be maintained at all times to premises and property which are accessible from, and only from, the A160. The Order comes into force on 3 November 2019 and has a maximum duration of eighteen months.

The contact for any further information about this notice is Craig Nicholson, telephone: 0300 470 2497, e-mail: craig.nicholson@highwaysengland.co.uk

RICHARD FOXTON, Highways England, 3 South, Lateral, 8 City Walk, LEEDS, LS11 9AT.

THE NORTH LINCOLNSHIRE COUNCIL
(Various Streets) (Prohibition and Restriction of Waiting and Street Parking Places) (Civil Enforcement and Consolidation Order) 2019

Notice is hereby given that on 28th October 2019, North Lincolnshire Borough Council made an Order under Sections 1, 2, 4, 5, 32, 35, 124 and Part IV of Schedule 9 of the Road Traffic Regulation Act 1984 as amended and the Traffic Management Act 2004 the effect of which is to revoke all the Amendment Orders listed in the Schedule below, to consolidate their contents in this Order, and to apply civil enforcement provisions. A copy of the Order, which will come into effect on 1st November 2019, together with a statement giving more detailed particulars of the Order can be seen at the Council Offices, Church Square House, Scunthorpe and at the Local Link Offices at Barton, Brigg, Crowle, Epworth and Scunthorpe during normal office hours or on the North Lincolnshire Council website at the following location - <http://www.northlincs.gov.uk/transport-and-streets/traffic-management/no-notifications/>. A copy of any of the revoked Orders is available upon request.

If you wish to question the validity of the Order or if any provision contained in it on the grounds that it is not within the powers of the Road Traffic Regulation Act 1984 or that a requirement of that Act or any instrument made under it has not been complied with, you may, within six weeks from the date on which the Order was made, make application for that purpose to the High Court.

SCHEDULE

Amendment Orders as detailed below and all incorporating the following in the title - the North Lincolnshire Council (Various Streets) (Prohibition and Restriction of Waiting and Street Parking Places) (Civil Enforcement and Consolidation) Order 2015:

Messingham Primary School 2015; St Bernadette's Catholic Primary Academy, Scunthorpe 2015; Hilton Ave and Burn Rd, Scunthorpe 2015; Kilton Primary School 2015; Fieldside, Crowle/St Norbert's Academy 2015; Buryhill Rd & Diana St, Scunthorpe 2015; College Rd and Mill Lane, East Halton (School) 2016; Messingham Rd/Moorwell Rd, Scunthorpe 2016; Willoughby Rd Primary School Safety Zone 2016; Highcliff Gardens Area, Scunthorpe 2016; Ram Boulevard, Scunthorpe 2016; Church St, Haxey 2016; Redbourne Rd, Hibaldstow 2016; Kettering Rd, Scunthorpe 2016; North End, Goxhill (Primary School) 2016; Orchard Rise/Fuchsia Croft, Scunthorpe 2017; High Burgate, Winteringham 2017; Gurnell St, Scunthorpe C of E Primary School 2017; Belmont St and Lindley St, Scunthorpe 2017; Church Lane/Cliff Gardens, Scunthorpe 2017; Northfield Rd, Messingham 2017; Front St, Ucleby 2017; Flixborough Rd/The Avenue/Northfield Rd Junction, Burton-upon-Stather (Primary School) 2017; Henderson Ave, Scunthorpe 2017; Lincoln Castle Way/Barrow Rd, New Holland 2017; West End Rd/Church Lane, Ucleby 2017; Newland Walk/ Webster Ave, Scunthorpe 2017; Normanby Rd, Scunthorpe (outside new Crosby School) 2017; Atherton Way/Europa Way, Brigg 2018; Main St, Kirmington 2018; West St and School Lane, West Butterwick 2018; Cemetery Rd, Scunthorpe 2018; Ashby High St/Broadway Area 2018; Various Rds/Sts, Scunthorpe, Bottesford & Brigg 2018; Lancaster Approach, North Killingholme 2019; Top Rd, South Killingholme 2019; Brumby Wood Lane, Scunthorpe 2019; The Nooking, Haxey (Outside New Car Park Exit) 2019; Redshank Drive, Scunthorpe 2019; Lodge Moor Area, Scunthorpe 2019; Rochdale Rd/Morecambe Ave/Lancaster Rd, Scunthorpe (Oakfield Primary School) 2019 Newbiggin, Westwoodside 2019

Dated this 31st day of October 2019

Church Square House W S Bell - Head of Legal & Democracy

30-40 High Street, Scunthorpe

NORTH LINCOLNSHIRE COUNCIL
Town and Country Planning
(Development Management)
Procedure (England) Order 2015 -
Notice under Article 15
Planning (Listed Building and
Conservation Area)
Regulations & Act 1990
Town and Country Planning Act 1990

Notice is hereby given that the Council has received the following applications which either affect a listed building, conservation area, or a major development or represents a departure from the Local Plan. Details are available at the Civic Centre, Ashby Road, Scunthorpe DN16 1AB or at www.northlincs.gov.uk/planning. Comments should be made within 21 days of this notice, preferably online or by email at planning@northlincs.gov.uk.

BARTON: PA/2019/1728
 Convert to 8 dwellings. Barton Sports Centre, Newport.

CADNEY: PA/2019/1625
 Erect outbuildings. Cadney Lodge, Main Street.

BURTON: PA/2019/1783
 Vary condition 2. Land adjacent to 30 High Street.

SCUNTHORPE: PA/2019/1782
 Outline 200 dwellings. Land south, Moorwell Road.

ELAND: PA/2019/1210
 Change use to site caravans. Seven Lakes Country Park, Wharf Road

BARTON: PA/2019/1438
 Convert to 8 dwellings. J W Stamp & Son, Holykirk.

BURTON: PA/2019/1715
 Amend boundary wall. 22 High Street. If you do write or email us, please bear in mind that anyone may read your letter and a copy will appear on the council's web site (personal details will be removed before being uploaded). In the event of any appeal, representations will be forwarded to the Department for Communities and Local Government and the appellant unless a contrary wish is clearly expressed.

Development Management

Legal Notices

EDITH HARRIS
(Deceased)

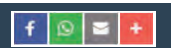
Pursuant to the Trustee Act 1925 any persons having a claim against or an interest in the Estate of the aforementioned deceased, late of Norwood House 15A Station Road Gunness Scunthorpe DN15 8SU, who died on 11/05/2019, are required to send particulars thereof in writing to the undersigned Solicitors on or before 10/01/2020, after which date the Estate will be distributed having regard only to claims and interests of which they have had notice.

MASON, BAGGOTT & GARTON
 13/19 Wells Street Scunthorpe
 North Lincolnshire DN15 6HN T589552

LEONARD PHILLIPSON
(Deceased)

Pursuant to the Trustee Act 1925 any persons having a claim against or an interest in the Estate of the aforementioned deceased, late of 16 Wainfleet Road Grimsby North East Lincolnshire DN33 1LD, who died on 01/07/2019, are required to send particulars thereof in writing to the undersigned Solicitors on or before 10/01/2020, after which date the Estate will be distributed having regard only to claims and interests of which they have had notice.

BS SOLICITORS
 Launceston House Town Hall Square
 Grimsby DN31 1JB T589492



NORTH LINCOLNSHIRE COUNCIL
(Various Roads, Barton-upon-Humber
(Deepdale Dash 10K Run)
(Temporary Prohibition of Traffic) Order 2019

Notice is hereby given that North Lincolnshire Council, being satisfied that the provisions set out in Section 16A of the Road Traffic Regulation Act 1984 apply, has made an Order under that Section on the occasion of the Deepdale Dash 10K Run. The Order will take effect on Sunday 3rd Nov 2019 and will have the effect of temporarily prohibiting any vehicle from proceeding along the following Street/Roads in Barton between 9.30am and 12pm that day - Whitecross St, Caistor Rd, B1206, Burnham Rd, The diversion route is A1077, A15, A18, B1211, A1077 Thornton Rd, Wold Road, B1402 Beck Lane, Barton St, Ferry Rd, A1077 to Barton. Dated this 31st day of October 2019

W S Bell - Head of Legal & Democracy
 Church Square House
 30-40 High Street, Scunthorpe

NORTH LINCOLNSHIRE COUNCIL
(Temporary Prohibition of Through Traffic
Burnham and Thornton Curtis

North Lincolnshire Council hereby gives notice that no person shall cause any vehicle to proceed along Roads/Lanes as follows on 11th Nov 2019 9am-3.30pm each day - Thornton Curtis Rd, Burnham, and Burnham Lane, Dam Lane and Northfield Lane, Thornton Curtis. The reason for each closure is for tree felling/trimming works, which will be carried out consecutively. The diversion for Thornton Curtis Rd is Barton Rd, Northfield Lane, Dam Lane, for Dam Lane is Northfield Lane, Barton Rd, Thornton Curtis Rd, for Northfield Lane is Barton Rd, Thornton Curtis Rd, Dam Lane, and for Burnham Lane is Main St, Thornton Rd, Wold Rd, Caistor Rd, Barton Rd, High St, Pond Side. Dated this 31st day of October 2019

W S Bell - Head of Legal & Democracy
 Church Square House
 30-40 High Street, Scunthorpe

NORTH LINCOLNSHIRE COUNCIL
(Temporary Prohibition of Through Traffic
Sheffield Street West, Scunthorpe

North Lincolnshire Council hereby gives notice that no person shall cause any vehicle to proceed along Sheffield St West 11th-29th Nov inclusive 8am-5pm each day (but varied if necessary to take account of any unforeseen circumstances). The closure is required to extend the pedestrian area. The diversion is Frodingham Rd, Berkeley St, Dale St. Dated this 31st day of October 2019

W S Bell - Head of Legal & Democracy
 Church Square House
 30-40 High Street, Scunthorpe

Goods Vehicle Operator's Licence

Lynn Ratcliffe trading as MLT of 26 Meredyke Road Luddington Scunthorpe DN17 4RD is applying to change an existing licence as follows: To add an operating centre to keep 6 goods vehicles and 6 trailers at Yard 1 Park Farm Road Foxhills Industrial Estate Scunthorpe DN15 8OP.

Owners or occupiers of land (including buildings) near the operating centre(s) who believe that their use or enjoyment of that land would be affected, should make written representations to the Traffic Commissioner at Hillcrest House, 386 Harehills Lane, Leeds, LS9 6NF, stating their reasons, within 21 days of this notice. Representatives must at the same time send a copy of their representations to the applicant at the address given at the top of this notice. A Guide to Making Representations is available from the Traffic Commissioner's office.

Any item any price free online

People are more likely to see your advert with a photo

marketplace.co.uk
 Your local place to buy and sell

Self-Serve online
Any item any price free online

marketplace.co.uk
 Your local place to buy and sell

EP UK Investment

South Humber Bank Energy Centre Project

The Planning Act 2008 – Section 48

The Infrastructure Planning (Applications: Prescribed Forms and Procedure) Regulations

2009 – Regulation 4

The Infrastructure Planning (Environmental Impact Assessment) Regulations 2017 – Regulation 13

NOTICE OF PROPOSED APPLICATION FOR A DEVELOPMENT CONSENT ORDER FOR THE SOUTH HUMBER BANK ENERGY CENTRE PROJECT

1. Notice is hereby given that EP Waste Management Ltd ('EPWM'), a subsidiary of EP UK Investments Limited, whose registered office is Part Ground Floor, Paradigm Building 3175 Century Way, Thorpe Park, Leeds LS15 8ZB, intends to submit an application ('the Proposed Application') to the Secretary of State for Business, Energy and Industrial Strategy for a Development Consent Order ('DCO') under Section 37 of the Planning Act 2008 (the '2008 Act') to authorise the construction, operation and maintenance of a new energy from waste ('EFW') power station with a capacity of up to 95 megawatts ('MW') gross output and associated development (together the 'Project').

The Project

- The site for the Project (the 'Site') would be located primarily on land within the boundary of the South Humber Bank Power Station Site, South Marsh Road, Near Stallingborough, DN41 8BZ, at grid reference TA 523000 413309. The Site extends to approximately 25 hectares.
- The proposed DCO would, amongst other matters, authorise the construction, operation and maintenance of:
 - an EFW power station, comprising fuel reception and storage facilities, consisting of vehicle ramps, a tipping hall, shredder, fuel storage bunker and crane; a combustion system housed within a boiler hall, consisting of two combustion lines and associated boilers; a steam turbine and generator housed within a turbine hall; a bottom ash handling system, including ash storage; a flue gas treatment system, including residue and reagent silos; emissions stacks and associated emissions monitoring systems; a cooling system comprising fin fan coolers; an air-cooled condenser; a compressed air system; an ammonia tank; a process effluent storage tank; a demineralised water treatment plant and demineralised water storage tanks; an electrical switchyard, including transformers; auxiliary diesel generators and diesel storage tanks; pipe racks, pipe runs and cabling; administration block, including control room, workshop and stores; fire water pump house and fire water tank; vehicle access road from South Marsh Road; internal vehicle access roads, crossings and pedestrian and cycle facilities and routes; security gatehouse, barriers and enclosures; weighbridges; car parking; heavy goods vehicle holding area and driver welfare block; and a surface water attenuation pond;
 - a connection to the electricity grid network;
 - a connection to the gas grid network; and
 - other associated development, including external lighting; fencing and boundary treatment; security measures; surface and foul water drainage systems; water, electricity, gas and other utilities connections; hard and soft landscaping; biodiversity mitigation and enhancement measures; temporary contractor facilities and construction laydown areas; vehicle access roads, crossings, parking and pedestrian and cycle facilities and routes.

Environmental Impact Assessment

- The Applicant has notified the Secretary of State in writing under Regulation 8(1)(b) of The Infrastructure Planning (Environmental Impact Assessment) Regulations 2017 (as amended) (the 'EIA Regulations') that it intends to provide an Environmental Statement ('ES') in respect of the Project. The Project is therefore 'EIA development' for the purposes of the EIA Regulations and an ES will form part of the Proposed Application.
- Information so far compiled about the Project's environmental impacts is contained in a Preliminary Environmental Information Report ('PEIR') and summarised in a Non-technical Summary. The PEIR and other documents relating to the Project, including plans and maps showing the nature and location of the Project (the Consultation Documents), are available to view or download free of charge from the Project website: <https://www.shbenergycentre.co.uk/> and for inspection free of charge from 31 October to 13 December 2019 at the following locations during the hours set out (opening hours may be subject to change):

Locations	Opening Times
Immingham Library, Pelham Rd, Immingham, DN40 1QF	Mon, Tues, Thurs & Fri: 8.30am to 5.30pm Wed & Sun: Closed Sat: 9am to 1pm
Europarc Innovation Centre, Innovation Way, Europarc, Grimsby DN37 9TT	Mon, Tues, Wed, Thurs & Fri: 8.30am to 4.30pm Sat & Sun: Closed
North East Lincolnshire Council, ENGIE, New Oxford House, George Street, Grimsby, DN31 1HB	Mon, Tues, Wed, Thurs, Fri: 8.30am to 4.30pm Sat & Sun: Closed

- A hard copy of the Consultation Documents is available on request for a maximum copying charge of £150.00. Hard copies of individual documents are also available on request. An electronic copy of the Consultation Documents (USB or CD) is available on request for a charge of £15.00. The documents can be obtained by writing to: SHBEC Consultation, c/o DWD, 6 New Bridge Street, London, EC4V 6AB or emailing consultation@shbenergycentre.co.uk.
- If you wish to respond to this notice, or make representations in respect of the Project, these should be sent to the Applicant. Please include your name and an address where any correspondence relating to the Project can be sent. Representations may be submitted in the following ways:

Post: SHBEC Consultation, c/o DWD, 6 New Bridge Street, London, EC4V 6AB

Email: consultation@shbenergycentre.co.uk

Website: via an online survey form on the Project website: <https://www.shbenergycentre.co.uk/>
- Any comments received will be analysed by the Applicant and any appointed agent of the Applicant, and copies may be made available in due course to the Secretary of State, the Planning Inspectorate and other relevant statutory authorities so that your comments can be noted. We will request that your personal details are not placed on public record and these will be held securely by the Applicant in accordance with the Data Protection Act 1998 and the General Data Protection Regulation and used solely in connection with the consultation process and subsequent DCO application and, except as noted above, will not be passed to third parties.
- Please note that all responses must be received by the Applicant no later than 11:59pm on 13 December 2019.
- If you would like any further information in respect of this notice or the Project, please contact the Project team using one of the contact methods described above.

EP Waste Management Ltd

National

Film review Here's Danny, in a dimly Shining sequel

Doctor Sleep

★★★★★

Peter Bradshaw

Did *The Shining* need a sequel? Well it's got one now, adapted by the director Mike Flanagan from Stephen King's 2013 followup novel. It is half an hour longer than the Stanley Kubrick film, although it seems more - laborious, directionless and densely populated with boring new characters. Your

attention is distracted from the central figure: Danny Torrance, once the kid in the Overlook Hotel, pedalling his trike around the endless corridors and eventually pursued by his axe-wielding dad (Jack Nicholson). The 1980 Kubrick movie, notoriously disliked by King, is a stylistic influence on this sequel, which references the big moments. (King has an executive producer credit. So perhaps he came round.)

Danny (Ewan McGregor) is grownup, unemployed, homeless, and added with alcoholism and post-traumatic stress disorder as a result of the grisly finale in the snow at the end of the first story. His mum is dead. Adult Danny is still



Dev Patel stars in *The Personal History of David Copperfield*

Dickens drama leads race for UK independent film awards

Andrew Pulver

The *Personal History of David Copperfield*, the Dickens adaptation starring Dev Patel and directed by Armando Iannucci, has emerged as the front runner for the British independent film awards with 11 nominations, including best British independent film and best actor for Patel.

The runner-up in the nominations count is the country and western

musical *Wild Rose*, which stars Jessie Buckley as a young Glaswegian singer dreaming of success, which scored 10 nods. The retro-horror homage *In Fabric*, directed by Peter Strickland, has garnered nine.

Another auteur piece, the Joanna Hogg-directed *The Souvenir*, also did well, with eight nominations, including best director for Hogg.

Although it has not yet been released in Britain, *The Personal History of David Copperfield* won wide praise after its premiere at the Toronto

If no such representations or objections are duly made, or if any so made are withdrawn, the Council may itself confirm the order as an unopposed order. If opposed, the order will be sent to the Secretary of State for Transport for confirmation and any representations or objections which have not been withdrawn will be sent with the order.

Dated: 31 October 2019

MR. K. VALAVAN, Director of Highways and Traffic Management, Low Hall, Argall Avenue, London, E10 7AS

THE SCHEDULE

Demolition of the existing Marlowe Road Estate and phased redevelopment of the site comprising 436 residential units (126 x 1 bed, 136 x 2 bed and 36 x 4 bed) Class A1, A2, A3, A4, A5, and D1 commercial space (1119sqm) in blocks ranging from two to seven storeys in height, car parking, internal infrastructure network, energy centre, new public plaza, hard and soft landscaping and associated works (and retention of Northwood Tower residential block)

(3418790)

LONDON BOROUGH OF TOWER HAMLETS STOPPING UP HIGHWAY LAND AT COVENTRY ROAD, E1 ACT 1990 S247 (2A) & 252 - NOTICE OF MAKING OF STOPPING UP ORDER

THE LONDON BOROUGH OF TOWER HAMLETS ("The Council") hereby gives notice that it has made an order under section 247 (2A) of the above Act entitled "The Stopping Up of Highways" Order to authorise the stopping up of highway land fronting Former Collingwood Estate, Coventry Road, E1 described in Part 1 of the schedule within this notice and hatched black on the plan attached to the Order.

Copies of the Order may be obtained, free of charge, on application to the offices of the London Borough of Tower Hamlets, Transportation & Highways, Mulberry Place, 5 Clive Crescent, London E14 2BG quoting reference s247/1019/Coventry/RR and may be inspected at all reasonable hours at these offices.

Any person aggrieved by the order and desiring to question the validity thereof, or of any provision contained therein, on the grounds that it is not within the powers of the above Act or that any requirement of that Act or of any regulation made hereunder has not been complied with in relation to the Order may, within 6 weeks from 29th October 2019 apply to the High Court for the suspension or quashing of the Order or of any provision contained therein.

THE SCHEDULE

Description of highway to be stopped up

1. The proposed stopping up area is located at the end of Coventry Road abutting the former Collingwood Estate measuring 19.4 metres in length and 16.7 metres in width and hatched black on the plan attached to the draft order.

2. Demolition of the existing community hall and erection of three buildings ranging from 4-5 storeys in height to provide 53 residential units (comprising of 23 x 1 bed; 8x2 bed; 16x3 bed) and the re-provision of the community centre 9438 sqm; 35 parking spaces; 75 bicycles spaces; communal private and public open space provision, plant and storage, and other works incidental to the proposed development.

(3418791)

SOUTH HUMBER BANK ENERGY CENTRE PROJECT

EP UK INVESTMENTS

THE PLANNING ACT 2008 – SECTION 48

THE INFRASTRUCTURE PLANNING (APPLICATIONS: PRESCRIBED FORMS AND PROCEDURE) REGULATIONS 2009 – REGULATION 4

THE INFRASTRUCTURE PLANNING (ENVIRONMENTAL IMPACT ASSESSMENT) REGULATIONS 2017 – REGULATION 13

NOTICE OF PROPOSED APPLICATION FOR A DEVELOPMENT

CONSENT ORDER FOR THE SOUTH HUMBER BANK ENERGY CENTRE PROJECT

1. Notice is hereby given that EP Waste Management Ltd ("EPWM"), a subsidiary of EP UK Investments Limited, whose registered office is Part Ground Floor, Paradigm Building 3175 Century Way, Thorpe Park, Leeds LS15 8ZB, intends to submit an application ("the Proposed Application") to the Secretary of State for Business, Energy and Industrial Strategy for a Development Consent Order (DCO)

under Section 37 of the Planning Act 2008 (the "2008 Act") to authorise the construction, operation and maintenance of a new energy from waste (EFW) power station with a capacity of up to 95 megawatts ("MW") gross output and associated development (together the "MW")

The Project

2. The site for the Project (the "Site") would be located primarily on land within the boundary of the South Humber Bank Power Station Site, South Marsh Road, Near Stallingborough, DN41 8BZ, at grid reference TA 523000 413309. The Site extends to approximately 25 hectares.

3. The proposed DCO would, amongst other matters, authorise the construction, operation and maintenance of:

3.1 an EFW power station, comprising fuel reception and storage facilities, consisting of vehicle ramps, a tipping hall, shredder, fuel storage bunker and crane; a combustion system housed within a boiler hall consisting of two combustion lines and associated boilers; a steam turbine and generator housed within a turbine hall; a bottom ash handling system, including ash storage; a flue gas treatment system, including residue and reagent silos, emissions stacks and associated emissions monitoring systems; a cooling system comprising fin fan coolers; an air-cooled condenser; a compressed air system; an ammonia tank; a process effluent storage tank; a demineralised water treatment plant and demineralised water storage tanks; an electrical switchyard, including transformers; auxiliary diesel generators and diesel storage tanks; pipe racks, pipe runs and cabling; administration block, including control room, workshop and stores; fire water pump house and fire water tank; vehicle access road from South Marsh Road; internal vehicle access roads, crossings and pedestrian and cycle facilities and routes; security gatehouse, barriers and enclosures; weighbridges; car parking; heavy goods vehicle holding area and driver welfare block; and a surface water attenuation pond;

3.2 a connection to the electricity grid network;

3.3 a connection to the gas grid network; and

3.4 other associated development, including external lighting; fencing and boundary treatment; security measures; surface and foul water drainage systems; water, electricity, gas and other utilities connections; hard and soft landscaping; biodiversity mitigation and enhancement measures; temporary contractor facilities and construction laydown areas; vehicle access roads, crossings, parking and pedestrian and cycle facilities and routes.

Environmental Impact Assessment

4. The Applicant has notified the Secretary of State in writing under Regulation 8(1)(b) of The Infrastructure Planning (Environmental Impact Assessment) Regulations 2017 (as amended) (the "EIA Regulations") that it intends to provide an Environmental Statement ("ES") in respect of the Project. The Project is therefore "EIA development" for the purposes of the EIA Regulations and an ES will form part of the Proposed Application.

5. Information so far compiled about the Project's environmental impacts is contained in a Preliminary Environmental Information Report ("PEIR") and summarised in a Non-technical Summary. The PEIR and other documents relating to the Project, including plans and maps showing the nature and location of the Project (the Consultation Documents) are available to view or download free of charge from the Project website: <https://www.shbecentre.co.uk/> and for inspection free of charge from 31 October to 13 December 2019 at the following locations during the hours set out (opening hours may be subject to change):

Locations	Opening Times
Inningham Library, Pelham Rd, Inningham, DN40 1QF	Mon, Tues, Thurs & Fri: 8:30am to 5:30pm Wed & Sun: Closed
Europarc Innovation Centre, Innovation Way, Europarc, Grimsby DN37 9TT	Sat: 9am to 1pm Mon, Tues, Wed, Thurs & Fri: 8:30am to 4:30pm Sat & Sun: Closed
North East Lincolnshire Council, ENGIE New Oxford House, George Street, Grimsby, DN31 1HB	Mon, Tues, Wed, Thurs, Fri: 8:30am to 4:30pm Sat & Sun: Closed

6. A hard copy of the Consultation Documents is available on request for a maximum copying charge of £150.00. Hard copies of individual documents are also available on request. An electronic copy of the Consultation Documents (USB or CD) is available on request for a charge of £15.00. The documents can be obtained by writing to: SHBEC Consultation, c/o DWD, 6 New Bridge Street, London, EC4V 6AB or emailing consultation@shbecentre.co.uk.

7. If you wish to respond to this notice, or make representations in respect of the Project, these should be sent to the Applicant. Please include your name and an address where any correspondence relating to the Project can be sent. Representations may be submitted in the following ways:

Post: SHBEC Consultation, c/o DWD, 6 New Bridge Street, London, EC4V 6AB

Email: consultation@shbecentre.co.uk
Website: via an online survey form on the Project website: <https://www.shbecentre.co.uk/>

8. Any comments received will be analysed by the Applicant and any appointed agent of the Applicant, and copies may be made available in due course to the Secretary of State, the Planning Inspectorate and other relevant statutory authorities so that your comments can be noted. We will request that your personal details are not placed on a public record and these will be held securely by the Applicant in accordance with the Data Protection Act 1998 and the General Data Protection Regulation and used solely in connection with the consultation process and subsequent DCO application and, except as noted above, will not be passed to third parties.

9. Please note that all responses must be received by the Applicant no later than 11:59pm on 13 December 2019.

10. If you would like any further information in respect of this notice or the Project, please contact the Project team using one of the contact methods described above.

EP Waste Management Ltd

(3418732)

WHEELABRATOR HAREWOOD PROJECT

THE PLANNING ACT 2008 – SECTION 48

THE INFRASTRUCTURE PLANNING (APPLICATIONS: PRESCRIBED FORMS AND PROCEDURE) REGULATIONS 2009 – REGULATION 4

THE INFRASTRUCTURE PLANNING (ENVIRONMENTAL IMPACT ASSESSMENT) REGULATIONS 2017 – REGULATION 13

NOTICE OF PROPOSED APPLICATION FOR A DEVELOPMENT

CONSENT ORDER FOR THE WHEELABRATOR HAREWOOD PROJECT

1. Notice is hereby given that WTI / EW Holdings Ltd ("Wheelabrator" or the "Applicant") of 123 Victoria Street, London SW1 6DE intends to submit an application ("the Proposed Application") to the Secretary of State for Business, Energy and Industrial Strategy for a Development Consent Order ("DCO") under Section 37 of the Planning Act 2008 (the "2008 Act") to authorise the construction, operation and maintenance of a new Waste-to-Energy ("WtE") facility with a capacity of up to 65 megawatts ("MW") gross electrical output and associated development (the "Proposed Development").

2. The Proposed Development would be located on land adjacent to Raymond Brown Solutions, A303 Enviropark, Drayton Road, Barton Stacey, Andover, Hampshire, SO21 3QS (the "Site").

3. The Proposed Development will comprise a WtE facility and associated buildings, structures and plant, including:

- 3.1 a tipping hall;
- 3.2 fuel storage bunker;
- 3.3 boiler house;
- 3.4 ash collection area (bottom ash bunker);
- 3.5 up to two fuel storage silos including emissions monitoring;
- 3.6 flue gas treatment building;
- 3.7 turbine hall housing a steam turbine and generator;
- 3.8 above ground fuel oil storage tanks for use at start up and as an auxiliary fuel;
- 3.9 administrative offices;
- 3.10 air cooled condensers;
- 3.11 grid connection substation(s) and mains transformer;
- 3.12 fire water tanks;
- 3.13 demineralised water treatment plant; and
- 3.14 supporting infrastructure comprising weighbridges and gatehouses, storage tanks, raw water tanks), emergency diesel generators and vehicle access roads including ramp to tipping hall.

4. The Proposed Development is classified under Schedule 2, Paragraph 3 of The Infrastructure Planning (Environmental Impact Assessment) Regulations 2017 (as amended) (the "EIA Regulations") and so is not automatically categorised as EIA (Environmental Impact Assessment) development. Wheelabrator has however notified the Secretary of State for Business, Energy and Industrial Strategy ("SEIS") under Regulation 8(1)(b) of the EIA Regulations that it proposes to provide an Environmental Statement and thus the Proposed Development is EIA development for the purposes of the EIA Regulations.

5. The proposed DCO would also seek, if required, the permanent and/or temporary compulsory acquisition of land and/or rights required for the Proposed Development.

6. Other powers that the DCO would seek, if found to be required, include the application and/or discontinuation of legislation relevant to the Proposed Development; tree and hedgerow removal; the temporary stopping up of public footpaths during construction works; the permanent and temporary changes to the highway network for and in the vicinity of the Site, and such ancillary, incidental and consequential works, provisions, permits, consents, waivers or releases as are necessary and convenient for the successful construction, operation and maintenance of the Proposed Development.

7. Information so far compiled about the Proposed Development's environmental impacts is contained in a Preliminary Environmental Information Report ("PEIR") and summarised in a Non-technical Summary. The PEIR and other documents relating to the Proposed Development, including plans and maps showing the nature and location of the Proposed Development (the consultation documents), are available to view or download free of charge from the Wheelabrator Harewood website: www.wtiharewood.co.uk and for inspection free of charge from 1 November to 12 December 2019 at the following locations during the hours set out (opening hours may be subject to change):

Locations	Opening Times
Test Valley Borough Council, Council Offices, Beech Hurst, Weyhill Road, Andover, SP10 3AJ	Mon - Thu: 08:30 - 17:00 Fri: 08:30 - 16:30 Sat & Sun: Closed
Andover Library, Chantry Centre, Andover, SP10 1LT	Mon - Wed: 09:00 - 17:00 Thu: 09:00 - 18:00 Fri: 09:00 - 17:00 Sat: 09:00 - 16:00 Sun: 11:00 - 15:00
Hampshire County Council, The Castle, Winchester, SO23 8JU	Mon - Thu: 09:00 - 17:00 Fri: 09:00 - 16:30 Sat & Sun: Closed
Whitchurch Library, Gill Nethercott Centre, Winchester Road, Whitchurch, RG28 7HP	Mon: 13:00 - 17:00 Tue: Closed Wed: 13:00 - 17:00 Thu: Closed Fri: 10:00 - 17:00 Sat: 10:00 - 13:00 Sun: Closed
The Cricketers Inn, Longparish, SP11 6PZ	Mon: Closed Tue - Thu: 12:00 - 15:00 18:00 - 23:00 Fri: 12:00 - 15:00 17:00 - 23:00 Sat: 12:00 - 15:00 18:00 - 23:00 Sun: 12:00 - 17:00
St Nicholas Church, Longparish, SP11 6PG	Mon - Sun: 09:00 - 17:00
Village Hall, Barton Stacey, SO21 3RL	Please obtain the key to the hall from Barton Stacey Post Office and Stacey (The Street Barton Stacey, SO21 3RL) or The Swan Inn (The Street, Barton Stacey, SO21 3RL) between 07:30 and 23:00. Mon: Closed Tue - Thu: 12:00 - 15:00

APPENDIX 2.3: EIA REGULATION 11 NOTICE – DUTY TO PUBLICISE

Date: 29 October 2019

Dear Sir/Madam,

SOUTH HUMBER BANK ENERGY CENTRE PROJECT - PROPOSED APPLICATION FOR AN ENERGY FROM WASTE POWER STATION AND ASSOCIATED DEVELOPMENT ON LAND AT THE SOUTH HUMBER BANK POWER STATION SITE, SOUTH MARSH ROAD, NEAR STALLINGBOROUGH, NORTH EAST LINCOLNSHIRE, DN41 8BZ

CONSULTATION IN ACCORDANCE WITH SECTION 42 'DUTY TO CONSULT' OF THE PLANNING ACT 2008 & REGULATION 13 'PRE-APPLICATION PUBLICITY UNDER SECTION 48 (DUTY TO PUBLICISE)' OF THE INFRASTRUCTURE PLANNING (ENVIRONMENTAL IMPACT ASSESSMENT) REGULATIONS 2017

We write on behalf of EP Waste Management Ltd ('the Applicant') ('EPWM'), a subsidiary of EP UK Investments Limited (EPUKI), in connection with the South Humber Bank Energy Centre Project (the 'Proposed Development').

The Applicant intends to submit an application (the 'Proposed Application') for a Development Consent Order (a 'DCO') under Section 37 of The Planning Act 2008 (the 'PA 2008') to the Secretary of State ('SoS') for Business, Energy and Industrial Strategy. The DCO, if made by the SoS, would authorise the construction, operation and maintenance of an energy from waste ('EfW') power station with a capacity of up to 95 megawatts ('MW') gross electrical output and associated development.

The site for the Proposed Development (the 'Site') primarily comprises undeveloped land within the boundary of the existing South Humber Bank Power Station Site (a combined cycle gas turbine power station) on South Marsh Road, near Stallingborough, DN41 8BZ, located between Immingham and Grimsby in North East Lincolnshire.

Further information relating to the Proposed Development is provided in this letter and on the accompanying USB device, which contains various documents (the 'Consultation Documents'), including a Preliminary Environmental Information Report ('PEIR') and Non-Technical Summary. If you or your organisation is unable to use the USB device the Consultation Documents can be accessed via the Project website: <https://www.shbenergycentre.co.uk/>

A hard copy of the Consultation Documents can also be inspected at a number of venues within the vicinity of the Site until the 13 December 2019. Details are provided toward the end of this letter.

Any comments and representations you may have on the Proposed Development should be submitted to the Applicant **no later than 11:59pm on 13 December 2019**. Details of how to make comments/representations are provided toward the end of this letter.

Section 42 'Duty to consult' & EIA Regulation 13 'Pre-application publicity under Section 48 (duty to publicise)'

Section 42 of the PA 2008 'Duty to consult' requires prospective applicants for a DCO to consult on their proposed application with those persons specified in the PA 2008 and in regulations made pursuant to the PA 2008. These persons ('prescribed persons') include local authorities, prescribed consultation bodies and affected/potentially affected landowners and other interests in land. The consultation must be carried out prior to submitting the application for a DCO to the SoS.

The Applicant has identified a number of persons and organisations, which it is required to consult for the purposes of Section 42 of the PA 2008. It has been determined that you or your organisation is a 'prescribed person' for the purposes of Section 42. The Applicant therefore wishes to seek your views on the Proposed Development.

Section 48 of the PA 2008 'Duty to publicise' also requires applicants for a DCO to publicise their proposed application by publishing a notice (a 'Section 48 Notice') once in a national newspaper, once in the London Gazette, and for at least two successive weeks in a local newspaper circulating in the vicinity of the land in which the proposed development would be situated. Regulation 13 of The Infrastructure Planning (Environmental Impact Assessment) Regulations 2017 (the 'EIA Regulations') requires applicants, at the same time as publishing the Section 48 Notice, to send a copy of that notice to the 'consultation bodies' and to any person notified to the applicant by the SoS under EIA Regulation 11(1)(c).

You have also been identified as a consultation body for the purposes of EIA Regulation 13 and therefore a copy of the Section 48 Notice that is being published is appended to this letter.

The Proposed Development

The Proposed Development is an EfW power station with a capacity of up to 95 megawatts ('MW') gross electrical output and associated development. The main elements of the EfW power station would comprise a fuel reception hall and storage bunker, a boiler hall, turbine hall, a flue gas treatment facility, emissions stacks, air-cooled condensers and an administration block. The Proposed Development also includes connections to the electricity and gas grid networks.

The site for the Proposed Development (the 'Site') primarily comprises undeveloped land within the boundary of the existing South Humber Bank Power Station Site on South Marsh Road, near Stallingborough, located between Immingham and Grimsby. The Site extends to approximately 25 hectares.

The EfW power station would produce low carbon electricity from Refuse Derived Fuel ('RDF'). It would make use of up to a maximum of 750,000 tonnes of RDF per year and produce enough electricity to supply the needs of close to 100,000 homes.

The Proposed Development would directly employ around 50 people during its operation and create around 600 jobs during construction. It represents an investment of approximately £300 million in North East Lincolnshire and will provide a range of supply chain opportunities for local businesses.

Through the generation of low carbon electricity, the Proposed Development would make a positive contribution towards the Government's climate change commitments and the security of national electricity supply. It would also make a positive contribution to waste management

by making use of waste material that would otherwise go to landfill or be exported overseas. This would be in accordance with National Policy Statements EN-1 and EN-3.

By way of background, full planning permission was granted by North East Lincolnshire Council (NELC) under the Town and Country Planning Act 1990 on 12 April 2019 (the 'Planning Permission') for the construction of an EfW power station with a gross electrical output of up to 49.9 MW (the 'Consented Development') at the Site.

EPWM is in the process of undertaking detailed design work on the Consented Development. The submission of information to discharge the planning conditions attached to the Planning Permission has already begun and it is anticipated that applications to discharge the conditions regarding the approval of the detailed design of the EfW power station will be submitted to NELC during Q1 2020. EPWM anticipates commencing construction of the Consented Development later in 2020.

Since the Planning Permission was granted, EPWM has been assessing potential opportunities to improve the efficiency of the Consented Development, hence why it is now proposing an EfW power station with a gross electrical output of up to 95 MW at the Site (the 'Proposed Development'). As the Proposed Development would have a gross electrical output of more than 50 MW, it is classed as a nationally significant infrastructure project (a 'NSIP') under the PA 2008, which requires development consent from the SoS, before it can be constructed and operated. EPWM anticipates submitting its application for development consent during Q1 2020.

The following works (additional to those which have been approved by the Planning Permission) would be required to allow the EfW power station to achieve a gross electrical output of up to 95 MW:

- Extended air-cooled condenser - an additional row of fans and heat exchangers will be added to the air-cooled condenser.
- Increased cooling capacity for the generator - to allow the generator to operate at an increased load and generate more power.
- Increased generator transformer capacity - to allow the generator to achieve up to 95 MW.
- Ancillary works - the above works will require ancillary works and operations, such as new cabling or pipes.

It should be noted that no changes are proposed to the maximum building dimensions or fuel throughput that were approved by the Planning Permission and assessed as part of the Environmental Impact Assessment that accompanied the planning application submitted to NELC.

The Proposed Application may seek additional powers, such as to carry out highway works to construct a new entrance on South Marsh Road and other powers that may be needed to ensure that the Proposed Development can be constructed, operated and maintained.

These powers will be set out in the draft DCO and explained in an Explanatory Memorandum, both of which will form part of the Proposed Application.

Environmental Impact Assessment

As the Proposed Development is an 'EIA development' within the meaning of the 'EIA Regulations', the Applicant is required to undertake an Environmental Impact Assessment (an 'EIA').

The Applicant has already notified the SoS under Regulation 8(1)(b) of the EIA Regulations that it proposes to provide an Environmental Statement ('ES'). The ES will provide a detailed description of the Proposed Development and its likely significant environmental effects. It will also provide a comparison of the effects associated with the Consented Development and the Proposed Development.

The Applicant has prepared a Preliminary Environmental Information Report ('PEIR'), which presents the environmental information gathered to date and provides the results of a preliminary assessment of the likely significant environmental effects of the construction, operation and decommissioning of the Proposed Development. This includes the cumulative effects of the Proposed Development together with relevant proposed but not yet implemented projects. The PEIR also includes a preliminary assessment of the residual effects of the Proposed Development once proposed mitigation measures have been taken into account.

The PEIR does not set out the final findings of the EIA, as that is ongoing, but does include information on the preliminary mitigation measures proposed.

The Non-technical Summary of the PEIR provides an overview of the findings and preliminary assessments set out in the PEIR.

Consultation Documents

The USB drive that accompanies this letter contains the following Consultation Documents in order to assist you in considering and commenting on the Proposed Development:

- Site Location Plan (Figure 1.1 of the PEIR);
- a plan showing the extent of the Site (the DCO application site boundary) edged in red and the main parts of the Site, including the Main Development Area that would accommodate the EFW power station (Figure 3.1 of the PEIR);
- a plan showing the indicative Proposed Development layout (Figure 4.1 of the PEIR);
- indicative 3D visualisations of the Proposed Development;
- the Preliminary Environmental Information Report ('PEIR') and its Non-technical Summary; and
- the Section 48 Notice that is being published.

The Consultation Documents can also be accessed via the Project website: <https://www.shbenergycentre.co.uk/>

A hard copy of the Consultation Documents can be inspected at the following venues within the vicinity of the Site until the 13 December 2019.

INSPECTION VENUES	
VENUE DETAILS	OPENING HOURS
Immingham Library , Pelham Rd, Immingham, DN40 1QF	Mon, Tues, Thurs & Fri: 8.30am to 5.30pm Wed & Sun: Closed Sat: 9am to 1pm
Europarc Innovation Centre , Innovation Way, Europarc, Grimsby DN37 9TT	Mon, Tues, Wed, Thurs & Fri: 8.30am to 4.30pm Sat & Sun: Closed
North East Lincolnshire Council , ENGIE, New Oxford House, George Street, Grimsby, DN31 1HB	Mon, Tues, Wed, Thurs, Fri: 8:30am to 4:30pm Sat & Sun: Closed

A hard copy of all the Consultation Documents is available on request for a maximum copying charge of £150.00. Hard copies of individual documents are also available on request. Further electronic copies of the documents (USB or CD) are available on request for a charge of £15.00.

The Consultation Documents can be obtained by:

Writing to: SHBEC Consultation, c/o DWD, 6 New Bridge Street, London, EC4V 6AB

Emailing: consultation@shbenergycentre.co.uk

Public Consultation Events

The following public consultation events will be held within the vicinity of the Site during the week of 11 November 2019. The events will provide an opportunity to meet members of the Project team, ask questions, discuss the proposals, and provide comments.

DATE	VENUE NAME AND ADDRESS	TIME
12/11/2019	Europarc Innovation Centre, Grimsby	12:30pm to 5:15pm
13/11/2019	Stallingborough Village Hall, Stallingborough	1:15pm to 5:30pm
14/11/2019	Healing Manor Hotel, Healing	2:30pm to 8pm

Responding to the Consultation

If you wish to submit comments or representations in respect of the Proposed Development, these should be sent to the Applicant. Please include your name and an address where any correspondence relating to the Proposed Development can be sent. Comments/representations can be submitted in the following ways:

Post: SHBEC Consultation, c/o DWD, 6 New Bridge Street, EC4V 6AB

E-mail: consultation@shbenergycentre.co.uk

Website: <https://www.shbenergycentre.co.uk/>

Any comments/representations received will be analysed by the Applicant and any appointed agent of the Applicant, and copies may be made available in due course to the SoS, the Planning Inspectorate and other relevant statutory authorities so that your comments can be noted. We will request that your personal details are not placed on public record and these will be held securely by the Applicant in accordance with the Data Protection Act 1998 and the General Data Protection Regulation and used solely in connection with the consultation process and subsequent DCO application and, except as noted above, will not be passed to third parties.

All comments/representations on the proposals should be submitted **no later than 11:59pm on 13 December 2019.**

Yours faithfully

A handwritten signature in black ink, appearing to read 'J Crankshaw', written over a faint, light blue circular watermark.

James Crankshaw
On behalf of EP Waste Management Ltd

Enc. USB drive of Consultation Documents
Section 48 & EIA Regulation 13 Notice

South Humber Bank Energy Centre Project

The Planning Act 2008 – Section 48

The Infrastructure Planning (Applications: Prescribed Forms and Procedure) Regulations 2009 – Regulation 4

The Infrastructure Planning (Environmental Impact Assessment) Regulations 2017 – Regulation 13

NOTICE OF PROPOSED APPLICATION FOR A DEVELOPMENT CONSENT ORDER FOR THE SOUTH HUMBER BANK ENERGY CENTRE PROJECT

1. Notice is hereby given that EP Waste Management Ltd ('EPWM'), a subsidiary of EP UK Investments Limited, whose registered office is Part Ground Floor, Paradigm Building 3175 Century Way, Thorpe Park, Leeds LS15 8ZB, intends to submit an application ('the Proposed Application') to the Secretary of State for Business, Energy and Industrial Strategy for a Development Consent Order ('DCO') under Section 37 of the Planning Act 2008 (the '2008 Act') to authorise the construction, operation and maintenance of a new energy from waste ('EfW') power station with a capacity of up to 95 megawatts ('MW') gross output and associated development (together the 'Project').

The Project

2. The site for the Project (the 'Site') would be located primarily on land within the boundary of the South Humber Bank Power Station Site, South Marsh Road, Near Stallingborough, DN41 8BZ, at grid reference TA 523000 413309. The Site extends to approximately 25 hectares.
3. The proposed DCO would, amongst other matters, authorise the construction, operation and maintenance of:
 - 3.1 an EfW power station, comprising fuel reception and storage facilities, consisting of vehicle ramps, a tipping hall, shredder, fuel storage bunker and crane; a combustion system housed within a boiler hall, consisting of two combustion lines and associated boilers; a steam turbine and generator housed within a turbine hall; a bottom ash handling system, including ash storage; a flue gas treatment system, including residue and reagent silos; emissions stacks and associated emissions monitoring systems; a cooling system comprising fin fan coolers; an air-cooled condenser; a compressed air system; an ammonia tank; a process effluent storage tank; a demineralised water treatment plant and demineralised water storage tanks; an electrical switchyard, including transformers; auxiliary diesel generators and diesel storage tanks; pipe racks, pipe runs and cabling; administration block, including control room, workshop and stores; fire water pump house and fire water tank; vehicle access road from South Marsh Road; internal vehicle access roads, crossings and pedestrian and cycle facilities and routes; security gatehouse, barriers and enclosures; weighbridges; car parking; heavy goods vehicle holding area and driver welfare block; and a surface water attenuation pond;
 - 3.2 a connection to the electricity grid network;

- 3.3 a connection to the gas grid network; and
- 3.4 other associated development, including external lighting; fencing and boundary treatment; security measures; surface and foul water drainage systems; water, electricity, gas and other utilities connections; hard and soft landscaping; biodiversity mitigation and enhancement measures; temporary contractor facilities and construction laydown areas; vehicle access roads, crossings, parking and pedestrian and cycle facilities and routes.

Environmental Impact Assessment

4. The Applicant has notified the Secretary of State in writing under Regulation 8(1)(b) of The Infrastructure Planning (Environmental Impact Assessment) Regulations 2017 (as amended) (the 'EIA Regulations') that it intends to provide an Environmental Statement ('ES') in respect of the Proposed Development. The Project is therefore 'EIA development' for the purposes of the EIA Regulations and an ES will form part of the Proposed Application.
5. Information so far compiled about the Project's environmental impacts is contained in a Preliminary Environmental Information Report ('PEIR') and summarised in a Non-technical Summary. The PEIR and other documents relating to the Project, including plans and maps showing the nature and location of the Project ('the Consultation Documents'), are available to view or download free of charge from the Project website: <https://www.shbenergycentre.co.uk/> and for inspection free of charge from 31 October to 13 December 2019 at the following locations during the hours set out (opening hours may be subject to change):

Locations	Opening Times
Immingham Library , Pelham Rd, Immingham, DN40 1QF	Mon, Tues, Thurs & Fri: 8.30am to 5.30pm Wed & Sun: Closed Sat: 9am to 1pm
Europarc Innovation Centre , Innovation Way, Europarc, Grimsby DN37 9TT	Mon, Tues, Wed, Thurs & Fri: 8.30am to 4.30pm Sat & Sun: Closed
North East Lincolnshire Council , ENGIE, New Oxford House, George Street, Grimsby, DN31 1HB	Mon, Tues, Wed, Thurs, Fri: 8:30am to 4:30pm Sat & Sun: Closed

6. A hard copy of the Consultation Documents is available on request for a maximum copying charge of £150.00. Hard copies of individual documents are also available on request. An electronic copy of the Consultation Documents (USB or CD) is available on request for a charge of £15.00. The documents can be obtained by writing to: SHBEC Consultation, c/o DWD, 6 New Bridge Street, London, EC4V 6AB or emailing consultation@shbenergycentre.co.uk
7. If you wish to respond to this notice, or make representations in respect of the Project, these should be sent to the Applicant. Please include your name and an address where any correspondence relating to the Project can be sent. Representations may be submitted in the following ways:

Post: SHBEC Consultation, c/o DWD, 6 New Bridge Street, London, EC4V 6AB

Email: consultation@shbenergycentre.co.uk

Website:

via an online survey form on the Project website: <https://www.shbenergycentre.co.uk/>

8. *Any comments received will be analysed by the Applicant and any appointed agent of the Applicant, and copies may be made available in due course to the Secretary of State, the Planning Inspectorate and other relevant statutory authorities so that your comments can be noted. We will request that your personal details are not placed on public record and these will be held securely by the Applicant in accordance with the Data Protection Act 1998 and the General Data Protection Regulation and used solely in connection with the consultation process and subsequent DCO application and, except as noted above, will not be passed to third parties.*
9. *Please note that all responses must be received by the Applicant **no later than 11:59pm on 13 December 2019.***
10. *If you would like any further information in respect of this notice or the Project, please contact the Project team using one of the contact methods described above.*

EP Waste Management Ltd

APPENDIX 2.4: SECTION 42 PA 2008 – SITE LAND OWNER NOTICE

South Humber Bank Energy Centre Project

The Planning Act 2008 – Section 42

NOTICE OF PROPOSED APPLICATION FOR A DEVELOPMENT CONSENT ORDER FOR THE SOUTH HUMBER BANK ENERGY CENTRE PROJECT

1. Notice is hereby given that EP Waste Management Ltd ('EPWM'), a subsidiary of EP UK Investments Limited, whose registered office is Part Ground Floor, Paradigm Building 3175 Century Way, Thorpe Park, Leeds LS15 8ZB, intends to submit an application ('the Proposed Application') to the Secretary of State for Business, Energy and Industrial Strategy for a Development Consent Order ('DCO') under Section 37 of the Planning Act 2008 (the 'PA 2008') to authorise the construction, operation and maintenance of a new energy from waste power station with a capacity of up to 95 megawatts gross electrical output and associated development (the 'Project').

The Project

2. The site for the Project (the 'Site') would be located primarily on land within boundary of the South Humber Bank Power Station Site, South Marsh Road, near Stallingborough, DN41 8BZ, at grid reference TA 523000 413309. The Site extends to approximately 25 hectares and is shown edged in red on the attached plan.
3. The proposed DCO would, amongst other matters, authorise the construction, operation and maintenance of:
 - 3.1 an EfW power station, comprising fuel reception and storage facilities, consisting of vehicle ramps, a tipping hall, shredder, fuel storage bunker and crane; a combustion system housed within a boiler hall, consisting of two combustion lines and associated boilers; a steam turbine and generator housed within a turbine hall; a bottom ash handling system, including ash storage; a flue gas treatment system, including residue and reagent silos; emissions stacks and associated emissions monitoring systems; a cooling system comprising fin fan coolers; an air-cooled condenser; a compressed air system; an ammonia tank; a process effluent storage tank; a demineralised water treatment plant and demineralised water storage tanks; an electrical switchyard, including transformers; auxiliary diesel generators and diesel storage tanks; pipe racks, pipe runs and cabling; administration block, including control room, workshop and stores; fire water pump house and fire water tank; vehicle access road from South Marsh Road; internal vehicle access roads, crossings and pedestrian and cycle facilities and routes; security gatehouse, barriers and enclosures; weighbridges; car parking; heavy goods vehicle holding area and driver welfare block; and a surface water attenuation pond;
 - 3.2 a connection to the electricity grid network;
 - 3.3 a connection to the gas grid network; and
 - 3.4 other associated development, including external lighting; fencing and boundary treatment; security measures; surface and foul water drainage systems; water, electricity, gas and other utilities connections; hard and soft landscaping; biodiversity mitigation and enhancement measures; temporary contractor facilities and construction laydown areas; vehicle access roads, crossings, parking and pedestrian and cycle facilities and routes.

Environmental Impact Assessment

4. The Applicant has notified the Secretary of State in writing under Regulation 8(1)(b) of The Infrastructure Planning (Environmental Impact Assessment) Regulations 2017 (as amended) (the 'EIA Regulations') that it intends to provide an Environmental Statement ('ES') in respect of the Proposed Development. The Project is therefore 'EIA development' for the purposes of the EIA Regulations and an ES will form part of the Proposed Application.
5. Information so far compiled about the Project's environmental impacts is contained in a Preliminary Environmental Information Report ('PEIR') and summarised in a Non-technical Summary. The PEIR and other documents relating to the Project, including plans and maps showing the nature and location of the

EP UK Investments

Project ('the Consultation Documents'), are available to view or download free of charge from the Project website: <https://www.shbenergycentre.co.uk/> and for inspection free of charge from 31 October to 13 December 2019 at the following locations during the hours set out (opening hours may be subject to change):

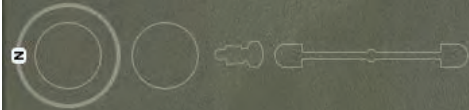
Locations	Opening Times
Immingham Library , Pelham Rd, Immingham, DN40 1QF	Mon, Tues, Thurs & Fri: 8.30am to 5.30pm Wed & Sun: Closed, Sat: 9am to 1pm
Europarc Innovation Centre , Innovation Way, Europarc, Grimsby DN37 9TT	Mon, Tues, Wed, Thurs & Fri: 8.30am to 4.30pm Sat & Sun: Closed
North East Lincolnshire Council , ENGIE, New Oxford House, George Street, Grimsby, DN31 1HB	Mon, Tues, Wed, Thurs, Fri: 8:30am to 4:30pm Sat & Sun: Closed

6. Copies of the Consultation Documents will also be available for inspection at a number of public consultation events during the week of 11 November 2019, details of which can be obtained by viewing the Project website at <https://www.shbenergycentre.co.uk/> or by contacting the Applicant using the details outlined below.
7. A hard copy of all the Consultation Documents is available on request for a maximum copying charge of £150.00. Hard copies of individual documents are also available on request. An electronic copy of the documents (USB or CD) is available on request for a charge of £15.00. The documents can be obtained by writing to: SHBEC Consultation, c/o DWD, 6 New Bridge Street, London, EC4V 6AB or emailing consultation@shbenergycentre.co.uk
8. If you wish to respond to this notice, or make representations in respect of the Project, these should be sent to the Applicant. Please include your name and an address where any correspondence relating to the Project can be sent. Representations may be submitted in the following ways:

Post: SHBEC Consultation, c/o DWD, 6 New Bridge Street, London, EC4V 6AB

Email: consultation@shbenergycentre.co.uk

Website: via an online survey form on the Project website: <https://www.shbenergycentre.co.uk/>
9. Any comments received will be analysed by the Applicant and any appointed agent of the Applicant, and copies may be made available in due course to the Secretary of State, the Planning Inspectorate and other relevant statutory authorities so that your comments can be noted. We will request that your personal details are not placed on public record and these will be held securely by the Applicant in accordance with the Data Protection Act 1998 and the General Data Protection Regulation and used solely in connection with the consultation process and subsequent DCO application and, except as noted above, will not be passed to third parties.
10. Comments on the Proposed Application must be received by the Applicant **no later than 11:59pm on 13 December 2019**.
11. If you would like any further information in respect of this notice or the Project, please contact the Project team using one of the contact methods described above.





EP UK Investments

Investment in the UK's energy infrastructure is a key priority for the UK government. The Department for Energy Security and Low Carbon (DESL) is committed to supporting the development of new energy infrastructure, including power generation, transmission, and distribution. This document outlines the criteria for investment in new energy infrastructure, including the need for a clear business case, a robust regulatory framework, and a commitment to environmental and social standards.

The following table provides a summary of the key criteria for investment in new energy infrastructure:

Criteria	Details
Business Case	The project must demonstrate a clear and sustainable business case, including a robust revenue model and a clear path to profitability.
Regulatory Framework	The project must be supported by a clear regulatory framework, including a robust framework for the allocation of risks and responsibilities.
Environmental and Social Standards	The project must comply with all relevant environmental and social standards, including the need for a robust environmental impact assessment and a commitment to social and community standards.

For further information, please contact the DESL Investment Team at investment@desl.gov.uk.

EP UK Investments

Investment in the UK's energy infrastructure is a key priority for the UK government. The Department for Energy Security and Low Carbon (DESL) is committed to supporting the development of new energy infrastructure, including power generation, transmission, and distribution. This document outlines the criteria for investment in new energy infrastructure, including the need for a clear business case, a robust regulatory framework, and a commitment to environmental and social standards.

The following table provides a summary of the key criteria for investment in new energy infrastructure:

Criteria	Details
Business Case	The project must demonstrate a clear and sustainable business case, including a robust revenue model and a clear path to profitability.
Regulatory Framework	The project must be supported by a clear regulatory framework, including a robust framework for the allocation of risks and responsibilities.
Environmental and Social Standards	The project must comply with all relevant environmental and social standards, including the need for a robust environmental impact assessment and a commitment to social and community standards.

For further information, please contact the DESL Investment Team at investment@desl.gov.uk.



10

100



6

EP UK Investments

Southminster Road Energy Centre Project

Southminster Road Energy Centre Project

Southminster Road Energy Centre Project

Southminster Road Energy Centre Project

Southminster Road Energy Centre Project

Southminster Road Energy Centre Project

Southminster Road Energy Centre Project

Southminster Road Energy Centre Project

Southminster Road Energy Centre Project

Southminster Road Energy Centre Project

Southminster Road Energy Centre Project

Southminster Road Energy Centre Project

Southminster Road Energy Centre Project

Southminster Road Energy Centre Project

Southminster Road Energy Centre Project

Southminster Road Energy Centre Project

Southminster Road Energy Centre Project

Southminster Road Energy Centre Project

Southminster Road Energy Centre Project

Southminster Road Energy Centre Project

Southminster Road Energy Centre Project

Southminster Road Energy Centre Project

Southminster Road Energy Centre Project

Southminster Road Energy Centre Project

Southminster Road Energy Centre Project

Southminster Road Energy Centre Project

Southminster Road Energy Centre Project

Southminster Road Energy Centre Project

Southminster Road Energy Centre Project

Southminster Road Energy Centre Project

Southminster Road Energy Centre Project

Southminster Road Energy Centre Project

Southminster Road Energy Centre Project

Southminster Road Energy Centre Project

Southminster Road Energy Centre Project

Southminster Road Energy Centre Project

Southminster Road Energy Centre Project

Southminster Road Energy Centre Project

Southminster Road Energy Centre Project

Southminster Road Energy Centre Project

Southminster Road Energy Centre Project

Southminster Road Energy Centre Project

Southminster Road Energy Centre Project

Southminster Road Energy Centre Project

Southminster Road Energy Centre Project

Southminster Road Energy Centre Project

Southminster Road Energy Centre Project

Southminster Road Energy Centre Project

Southminster Road Energy Centre Project

Southminster Road Energy Centre Project

Southminster Road Energy Centre Project

Southminster Road Energy Centre Project

Southminster Road Energy Centre Project

Southminster Road Energy Centre Project

Southminster Road Energy Centre Project

EP UK Investments

South Humber Bank Energy Centre Project

The Planning Act 2008 - Section 42

NOTICE OF PROPOSED APPLICATION FOR A DEVELOPMENT CONSENT ORDER FOR THE SOUTH HUMBER BANK ENERGY CENTRE PROJECT

1. Notice is hereby given that EP Waste Management Ltd (EPWML), a subsidiary of EP UK Investments Limited, whose registered office is at Park Ground Floor, Paradigm Building 3175 Century Way, Thorpe Park, Leeds LS15 8TB, intends to submit an application (the Proposed Application) to the Secretary of State for Business, Energy and Industrial Strategy for a Development Consent Order (DCO) under Section 37 of the Planning Act 2008 (the 'PA 2008') to authorise the construction, operation and maintenance of a new energy from waste power station with a capacity of up to 95 megawatts gross electrical output and associated development (the Project).

The Project

2. The site for the Project (the Site) would be located primarily on land within boundary of the South Humber Bank Power Station Site, South Marsh Road, near Stallingborough, DN41 8BZ, at grid reference TA 92300 413559. The Site extends to approximately 35 hectares and is shown edged in red on the attached plan.

3. The proposed DCO would, amongst other matters, authorise the construction, operation and maintenance of:

3.1 an EW power station, comprising fuel reception and storage facilities, consisting of vehicle ramps, a tipping hall, shredder, fuel storage bunker and crane; a combustion system housed within a boiler hall, consisting of two combustion lines and associated boilers, a steam turbine and generator housed within a turbine hall; a bottom ash handling system, including ash storage; a flue gas treatment system, including residue and reagent silos; emissions stacks and associated emissions monitoring systems; a cooling system comprising fan coolers; an air-cooled condenser; a compressed air system; an ammonia tank; a process effluent storage tank; a demineralised water treatment plant and demineralised water storage tanks; an electrical substation, including transformers, auxiliary diesel generators and diesel storage tanks; site roads, pipe runs and cabling; administration block including control room, workshop and stores; fire water pump house and fire water tank; vehicle access road from South Marsh Road; internal vehicle access roads, crossings and pedestrian and cycle facilities and routes; security guardhouse, barriers and enclosures; weighbridge; car parking; heavy goods vehicle holding area and driver welfare block; and a surface water attenuation pond;

3.2 a connection to the electricity grid network;

3.3 a connection to the gas grid network; and

3.4 other associated development, including external lighting; fencing and boundary treatment; security measures; surface and foul water drainage systems; water, electricity, gas and other utilities connections; hard and soft landscaping; biodiversity mitigation and enhancement measures; temporary contractor facilities and construction laydown areas; vehicle access roads, crossings, parking and pedestrian and cycle facilities and routes.

Environmental Impact Assessment

4. The Applicant has notified the Secretary of State in writing under Regulation 8(1)(b) of The Infrastructure Planning (Environmental Impact Assessment) Regulations 2017 (as amended) (the 'EIA Regulations') that it intends to provide an Environmental Statement (ES) in respect of the Proposed Development. The Project is therefore 'EIA development' for the purposes of the EIA Regulations and an ES will form part of the Proposed Application.

5. Information so far as is required about the Project's environmental impacts is contained in a Preliminary Environmental Information Report (PEIR) and summarised in a Non-Technical Summary. The PEIR and other documents relating to the Project, including plans and maps showing the nature and location of the

EP UK Investments

Project (the Consultation Documents), are available for review at no charge from the Project website: <https://www.epukinvestments.co.uk> and for download free of charge from the Project website at <https://www.epukinvestments.co.uk> and for download free of charge from 31 October to 13 December 2019 at the following locations during the hours of opening hours may be subject to change:

Locations	Opening Hours
Inverthorpe Library, Pelham Rd, Inverthorpe, Chesham, Chesham	Mon, Tues, Thurs & Fri 9.30am to 5.30pm
European Innovation Centre, Innovation Way, European, Grimsby DN37 9TT	Mon, Tues, Thurs & Fri 9.30am to 5.30pm
North East Lincolnshire Council, ENGLE, New Oxford House, George Street, Grimsby, DN31 1UB	Sat & Sun, Closed

8. Copies of the Consultation Documents will also be available for inspection at a number of public consultation events during the week of 11 November 2019 details of which can be obtained by visiting the Project website at <https://www.epukinvestments.co.uk> or by contacting the Applicant using the details outlined below.

7. A hard copy of all the Consultation Documents is available on request for a maximum copying charge of £150.00. Hard copies of individual documents are also available on request. An electronic copy of the documents (USB or CD) is available on request for a charge of £15.00. The documents can be obtained by writing to: SHBEC Consultation, c/o DWG, 6 New Bridge Street, London, EC4V 6AB or emailing consultation@shbec.co.uk

8. If you wish to respond to this notice, or make representations in respect of the Project, these should be sent to the Applicant. Please include your name and an address where any correspondence relating to the Project can be sent. Representations may be submitted in the following ways:

Post: SHBEC Consultation, c/o DWG, 6 New Bridge Street, London, EC4V 6AB

Email: consultation@shbec.co.uk

Website: visit an online survey form on the Project website: <https://www.epukinvestments.co.uk>

9. Any comments received will be analysed by the Applicant and any approved aspects of the Applicant, and other relevant statutory authorities in due course to the Secretary of State. The Planning Inspectorate and other relevant statutory authorities do that your comments can be noted. You will require that your comments may be made available in due course to the Secretary of State. The comments will be used in accordance with the Data Protection Act 1998 and the General Data Protection Regulation and used solely in connection with the consultation process and subsequent DCO application and, except as noted above, will not be passed to third parties.

10. Comments on the Proposed Application must be received by the Applicant no later than 11.59pm on 13 December 2019.

11. If you would like any further information in respect of this notice or the Project, please contact the Project team using one of the contact methods described above.

EP UK Investments

South Hunter Bank Energy Centre Project

The Planning Act 2008 – Section 42

NOTICE OF PROPOSED APPLICATION FOR A DEVELOPMENT CONSENT ORDER FOR THE SOUTH HUNTER BANK ENERGY CENTRE PROJECT

1. Notice is hereby given that EP Waste Management Ltd (EPWML), a subsidiary of EP UK Investments Limited, whose registered office is Port Ground Floor, Paradigm Building 3175 Century Way, Three Park, Leeds LS11 8SL, intends to submit an application (The Proposed Application) to the Secretary of State for Business, Energy and Industrial Strategy for a Development Consent Order (DCO) under Section 37 of the Planning Act 2008 (the "PA 2008") to authorise the construction, operation and maintenance of a new energy from waste power station with a capacity of up to 55 megawatts gross electrical output and associated development (the "Project").

The Project

2. The site for the Project (the "Site") would be located primarily on land within boundary of the South Hunter Bank Power Station Site, South Marsh Road, near Stallingborough, DN41 8BZ, at grid reference TA 523000 413500. The Site extends to approximately 25 hectares and is shown edged in red on the attached plan.

3. The proposed DCO would, amongst other matters, authorise the construction, operation and maintenance of:

3.1 an EFW power station, comprising fuel reception and storage facilities, consisting of vehicle ramps, a tipping hall, shredder, fuel storage bunker and crane, a combustion system housed within a boiler hall, consisting of two combustion lines and associated boilers, a steam turbine and generator housed within a turbine hall, a bottom ash handling system, including ash storage, a flue gas treatment system, including residue and reagent silos, emissions stacks and associated emissions monitoring systems, a cooling system comprising fan coil coolers, an air-cooled condenser, a compressed air system, an ammonia tank, a process effluent storage tank, a demineralised water treatment plant and demineralised water storage tanks; an electrical switchyard, including transformers, auxiliary diesel generators and diesel storage tanks, pipe racks, pipe runs and tapping, administration block, including control room, workshop and stores, fire water pump house and fire water tank, vehicle access road from South Marsh Road, internal vehicle access roads, crossings and pedestrian and cycle facilities and routes, security gatehouse, barriers and enclosures, weighbridges, car parking, heavy goods vehicle holding area and driver welfare block, and a surface water attenuation pond.

3.2 a connection to the electricity grid network;

3.3 a connection to the gas grid network, and

3.4 other associated development, including external lighting, fencing and boundary treatment, security measures, surface and foul water drainage systems, water, electricity, gas and other utilities connections, hard and soft landscaping, biodiversity mitigation and enhancement measures, temporary contractor facilities and construction laydown areas, vehicle access roads, crossings, parking and pedestrian and cycle facilities and routes.

Environmental Impact Assessment

4. The Applicant has notified the Secretary of State in writing under Regulation 6(1)(b) of The Infrastructure Planning (Environmental Impact Assessment) Regulations 2017 (as amended) (the "EIA Regulations") that it intends to provide an Environmental Statement (ES) in respect of the Proposed Development. The Project is therefore "EIA development" for the purposes of the EIA Regulations and an ES will form part of the Proposed Application.

5. Information as to the content of the Project's environmental impacts is contained in a Preliminary Environmental Information Report (PEIR) and summarised in a Non-Technical Summary. The PEIR and other documents relating to the Project, including plans and maps showing the nature and location of the

EP UK Investments

Project (the "Consultation Documents"), are available to view or download free of charge from the Project website <https://www.epukinvestments.co.uk/> and for inspection free of charge from 31 October to 13 December 2019 at the following locations during the hours set out (opening hours may be subject to change):

Locations	Opening Times
Stromsgate Library, Pelican Rd, Stromsgate, DN10 1GF	Mon, Tues, Thurs & Fri 8.30am to 5.30pm Wed & Sun, Closed, Sat 9am to 1pm
European Innovation Centre, Innovation Way, European, Grimsby DN2 8TT	Mon, Tues, Wed, Thurs & Fri 8.30am to 4.30pm Sat & Sun, Closed
North East Lincolnshire Council, ENGIC, New Colind House, George Street, Grimsby, DN2 1HG	Mon, Tues, Wed, Thurs, Fri 8.30am to 4.30pm Sat & Sun, Closed

6. Copies of the Consultation Documents will also be available for inspection at a number of public consultation events during the week of 11 November 2019; details of which can be obtained by viewing the Project website at <https://www.epukinvestments.co.uk/> or by contacting the Applicant using the details set out below.

7. A hard copy of all the Consultation Documents is available on request for a maximum copying charge of £150.00. Hard copies of individual documents are also available on request. An electronic copy of the documents (USB or CD) is available on request for a charge of £15.00. The documents can be obtained by writing to: SHBEC Consultation, c/o DMO, 6 New Bridge Street, London, EC4V 6AN or emailing consultation@shbect.co.uk

8. If you wish to respond to the notice or make representations in respect of the Project, these should be sent to the Applicant. Please include your name and an address where any correspondence relating to the Project can be sent. Representations may be submitted in the following ways:

Post: SHBEC Consultation, c/o DMO, 6 New Bridge Street, London, EC4V 6AN

Email: consultation@shbect.co.uk

Website: via an online survey form on the Project website <https://www.epukinvestments.co.uk/>

9. Any comments received will be analysed by the Applicant and any appointed agent of the Applicant, and copies may be made available to the Secretary of State. The Planning Inspectorate and other relevant statutory authorities to whom your comments can be sent. We will ensure that your comments are not passed on publicly and that they will be held securely by the Applicant in respect of comments for the Consultation Act 1998 and the Data Protection Act 1998. Your comments will not be used for any other purpose.

10. Comments for the Proposed Application must be received by the Applicant no later than 11.59pm on 13 December 2019.

11. If you wish to see any further information in relation to this notice or the Project, please contact the Project team using one of the contact details provided above.

41

[illegible]

UK Investments

The following information is provided for the purpose of illustrating the various types of investments that can be made in the UK.

1. Direct Investments

These are investments in which the investor has a significant influence over the management of the company. They are usually made in the form of shares or loans.

2. Indirect Investments

These are investments in which the investor does not have a significant influence over the management of the company. They are usually made in the form of bonds or debentures.

3. Venture Capital Investments

These are investments in which the investor provides capital to start-up or early stage companies. They are usually made in the form of shares.

4. Private Equity Investments

These are investments in which the investor provides capital to established companies. They are usually made in the form of shares.

5. Real Estate Investments

These are investments in which the investor provides capital to purchase property. They are usually made in the form of shares or loans.

6. Infrastructure Investments

These are investments in which the investor provides capital to build or maintain infrastructure. They are usually made in the form of shares or loans.

7. Social Impact Investments

These are investments in which the investor provides capital to companies that have a positive social impact. They are usually made in the form of shares or loans.

8. Environmental Investments

These are investments in which the investor provides capital to companies that are focused on environmental issues. They are usually made in the form of shares or loans.

9. Technology Investments

These are investments in which the investor provides capital to companies that are focused on technology. They are usually made in the form of shares or loans.

10. Healthcare Investments

These are investments in which the investor provides capital to companies that are focused on healthcare. They are usually made in the form of shares or loans.

11. Financial Services Investments

These are investments in which the investor provides capital to companies that are focused on financial services. They are usually made in the form of shares or loans.

12. Energy Investments

These are investments in which the investor provides capital to companies that are focused on energy. They are usually made in the form of shares or loans.

13. Agriculture Investments

These are investments in which the investor provides capital to companies that are focused on agriculture. They are usually made in the form of shares or loans.

14. Manufacturing Investments

These are investments in which the investor provides capital to companies that are focused on manufacturing. They are usually made in the form of shares or loans.

15. Retail Investments

These are investments in which the investor provides capital to companies that are focused on retail. They are usually made in the form of shares or loans.

16. Media Investments

These are investments in which the investor provides capital to companies that are focused on media. They are usually made in the form of shares or loans.

17. Telecommunications Investments

These are investments in which the investor provides capital to companies that are focused on telecommunications. They are usually made in the form of shares or loans.

18. Transportation Investments

These are investments in which the investor provides capital to companies that are focused on transportation. They are usually made in the form of shares or loans.

19. Utilities Investments

These are investments in which the investor provides capital to companies that are focused on utilities. They are usually made in the form of shares or loans.

20. Other Investments

These are investments in which the investor provides capital to companies that are not in any of the above categories. They are usually made in the form of shares or loans.